

For Research Use Only

CD90 Recombinant antibody, PBS Only (Capture)

Catalog Number: 84180-1-PBS



Basic Information

Catalog Number: 84180-1-PBS	GenBank Accession Number: BC065559	Purification Method: Protein A purification
Size: 100ug , Concentration: 1 mg/ml by Nanodrop;	GeneID (NCBI): 7070	CloneNo.: 241290B1
Source: Rabbit	UNIPROT ID: P04216	
Isotype: IgG	Full Name: Thy-1 cell surface antigen	
	Calculated MW: 161 aa, 18 kDa	
	Observed MW: 25-35 kDa	

Applications

Tested Applications:
WB, IF/ICC, Cytometric bead array, Indirect ELISA

Species Specificity:
human, mouse, rat, pig

Product Information

84180-1-PBS targets CD90 as part of a matched antibody pair:

MP01072-1: 84180-1-PBS capture and 84180-2-PBS detection (validated in Cytometric bead array)

Unconjugated rabbit recombinant monoclonal antibody in PBS only (BSA and azide free) storage buffer at a concentration of 1 mg/mL, ready for conjugation. Created using Proteintech's proprietary in-house recombinant technology. Recombinant production enables unrivalled batch-to-batch consistency, easy scale-up, and future security of supply.

This conjugation ready format makes antibodies ideal for use in many applications including: ELISAs, multiplex assays requiring matched pairs, mass cytometry, and multiplex imaging applications. Antibody use should be optimized by the end user for each application and assay.

Background Information

CD90, also known as THY1, is a 25-35 kDa protein that is expressed on 1-4% of human fetal liver cells, cord blood cells, and bone marrow cells. CD90 is one of the essential surface molecules expressed on human MSC from bone marrow and other sources. Activation of Thy-1 has been reported to promote T cell activation. It also affects numerous nonimmunologic biological processes, including cellular adhesion, neurite outgrowth, tumor growth, migration, and cell death.

Storage

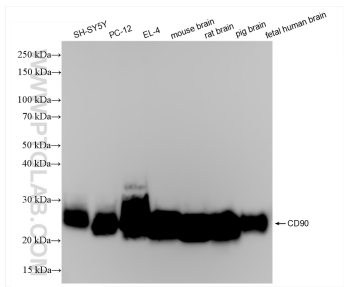
Storage:
Store at -80°C.

Storage Buffer:
PBS only, pH7.3

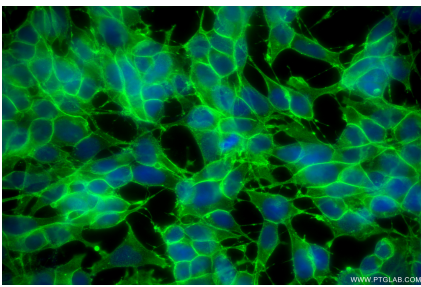
For technical support and original validation data for this product please contact:
T: 1 (888) 4PTGLAB (1-888-478-4522) (toll free in USA), or 1(312) 455-8498 (outside USA)
E: proteintech@ptglab.com
W: ptglab.com

This product is exclusively available under Proteintech Group brand and is not available to purchase from any other manufacturer.

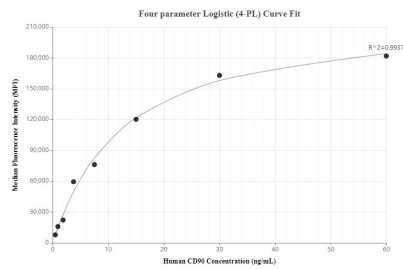
Selected Validation Data



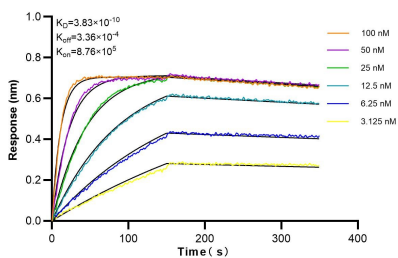
Various lysates were subjected to SDS PAGE followed by western blot with 84180-1-RR (CD90 antibody) at dilution of 1:10000 incubated at room temperature for 1.5 hours. This data was developed using the same antibody clone with 84180-1-PBS in a different storage buffer formulation.



Immunofluorescent analysis of (-20°C Methanol) fixed SH-SY5Y cells using CD90 antibody (84180-1-RR, Clone: 241290B1) at dilution of 1:400 and CoraLite® 488-Conjugated Goat Anti-Rabbit IgG(H+L) (SA00013-2). This data was developed using the same antibody clone with 84180-1-PBS in a different storage buffer formulation.



Cytometric bead array standard curve of MP01072-1, CD90 Recombinant Matched Antibody Pair, PBS Only. Capture antibody: 84180-1-PBS. Detection antibody: 84180-2-PBS. Standard: RP02312. Range: 0.469-60 ng/mL.



Biolayer interferometry (BLI) kinetic assays of 84180-1-RR against Human CD90 were performed. The affinity constant is 0.383 nM.