

For Research Use Only

# HER2/ErbB2 Recombinant antibody, PBS Only (Capture)

Catalog Number: 84182-2-PBS



## Basic Information

**Catalog Number:**

84182-2-PBS

**Size:**

100ug, Concentration: 1 mg/ml by  
Nanodrop;

**Source:**

Rabbit

**Isotype:**

IgG

**GenBank Accession Number:**

BC156755

**GeneID (NCBI):**

2064

**UNIPROT ID:**

P04626

**Full Name:**

v-erb-b2 erythroblastic leukemia  
viral oncogene homolog 2,  
neuro/glioblastoma derived  
oncogene homolog (avian)

**Calculated MW:**

1255 aa, 138 kDa

**Purification Method:**

Protein A purification

**CloneNo.:**

241409F9

## Applications

**Tested Applications:**

Cytometric bead array, Sandwich ELISA, Indirect ELISA,  
Sample test

**Species Specificity:**

human

## Product Information

84182-2-PBS targets HER2/ErbB2 as part of a matched antibody pair:

MP01080-1: 84182-2-PBS capture and 84182-3-PBS detection (validated in Cytometric bead array, Sandwich ELISA)

MP01080-2: 84182-2-PBS capture and 84182-1-PBS detection (validated in Cytometric bead array)

Unconjugated rabbit recombinant monoclonal antibody in PBS only (BSA and azide free) storage buffer at a concentration of 1 mg/mL, ready for conjugation. Created using Proteintech's proprietary in-house recombinant technology. Recombinant production enables unrivalled batch-to-batch consistency, easy scale-up, and future security of supply.

This conjugation ready format makes antibodies ideal for use in many applications including: ELISAs, multiplex assays requiring matched pairs, mass cytometry, and multiplex imaging applications. Antibody use should be optimized by the end user for each application and assay.

## Storage

**Storage:**

Store at -80°C.

**Storage Buffer:**

PBS Only

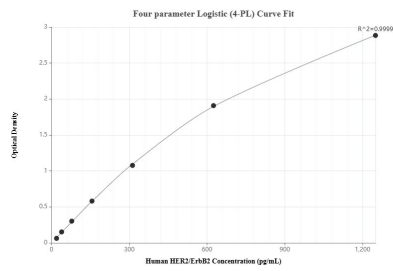
For technical support and original validation data for this product please contact:

T: 1 (888) 4PTGLAB (1-888-478-4522) (toll free  
in USA), or 1(312) 455-8498 (outside USA)

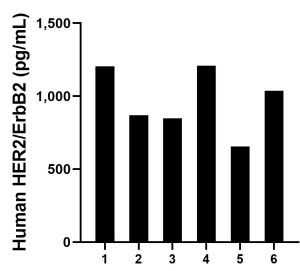
E: [proteintech@ptglab.com](mailto:proteintech@ptglab.com)  
W: [ptglab.com](http://ptglab.com)

This product is exclusively available under Proteintech Group brand and is not available to purchase from any other manufacturer.

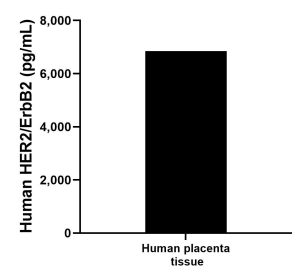
Selected Validation Data



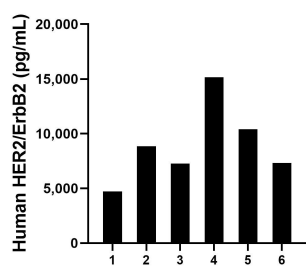
Sandwich ELISA standard curve of MP01080-1, Human HER2/ErbB2 Recombinant Matched Antibody Pair - PBS only. 84182-2-PBS was coated to a plate as the capture antibody and incubated with serial dilutions of standard RP02350. 84182-3-PBS was HRP conjugated as the detection antibody. Range: 19.5-1250 pg/mL



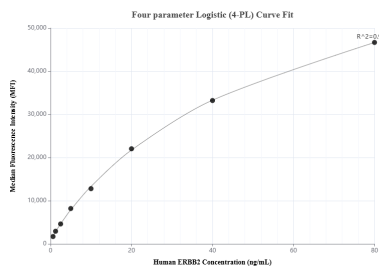
Human milk of six individual healthy human donors was measured. The human HER2/ErbB2 concentration of detected samples was determined to be 969.9 pg/mL with a range of 654.3 - 1,208.0 pg/mL



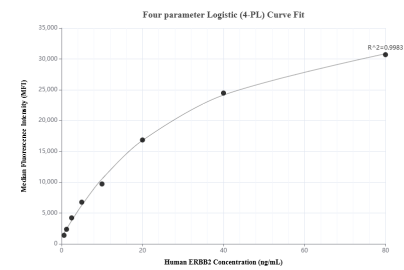
The mean HER2/ErbB2 concentration was determined to be 6,844.8 pg/mL in human placenta tissue extract based on a 2.9 mg/mL extract load.



Serum of six individual healthy human donors was measured. The human HER2/ErbB2 concentration of detected samples was determined to be 8,952.9 pg/mL with a range of 4,726.1 - 15,157.7 pg/mL



Cytometric bead array standard curve of MP01080-1, HER2/ERBB2 Recombinant Matched Antibody Pair, PBS Only. Capture antibody: 84182-2-PBS. Detection antibody: 84182-3-PBS. Standard: RP02350. Range: 0.625-80 ng/mL



Cytometric bead array standard curve of MP01080-2, ERBB2 Recombinant Matched Antibody Pair, PBS Only. Capture antibody: 84182-2-PBS. Detection antibody: 84182-1-PBS. Standard: RP02350. Range: 0.625-80 ng/mL