

For Research Use Only

HER2/ErbB2 Recombinant antibody, PBS Only (Capture/Detector)

Catalog Number: 84182-3-PBS



Basic Information

Catalog Number:

84182-3-PBS

Size:

100ug, Concentration: 1 mg/ml by
Nanodrop;

Source:

Rabbit

Isotype:

IgG

GenBank Accession Number:

BC156755

GeneID (NCBI):

2064

UNIPROT ID:

P04626

Full Name:

v-erb-b2 erythroblastic leukemia
viral oncogene homolog 2,
neuro/glioblastoma derived
oncogene homolog (avian)

Calculated MW:

1255 aa, 138 kDa

Purification Method:

Protein A purification

CloneNo.:

241409H4

Applications

Tested Applications:

Cytometric bead array, Sandwich ELISA, Indirect ELISA,
Sample test

Species Specificity:

human

Product Information

84182-3-PBS targets HER2/ErbB2 as part of a matched antibody pair:

MP01080-1: 84182-2-PBS capture and 84182-3-PBS detection (validated in Cytometric bead array, Sandwich ELISA)

MP01080-3: 84182-3-PBS capture and 84182-1-PBS detection (validated in Cytometric bead array)

Unconjugated rabbit recombinant monoclonal antibody in PBS only (BSA and azide free) storage buffer at a concentration of 1 mg/mL, ready for conjugation. Created using Proteintech's proprietary in-house recombinant technology. Recombinant production enables unrivalled batch-to-batch consistency, easy scale-up, and future security of supply.

This conjugation ready format makes antibodies ideal for use in many applications including: ELISAs, multiplex assays requiring matched pairs, mass cytometry, and multiplex imaging applications. Antibody use should be optimized by the end user for each application and assay.

Storage

Storage:

Store at -80°C.

Storage Buffer:

PBS Only

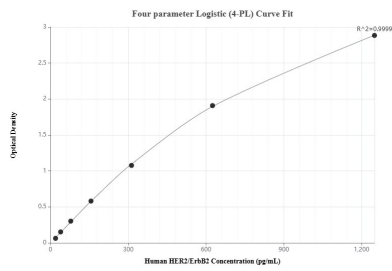
For technical support and original validation data for this product please contact:

T: 1 (888) 4PTGLAB (1-888-478-4522) (toll free
in USA), or 1(312) 455-8498 (outside USA)

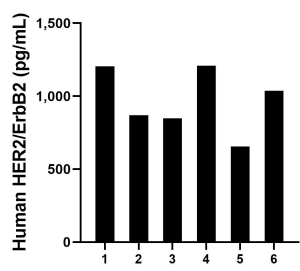
E: proteintech@ptglab.com
W: ptglab.com

This product is exclusively available under Proteintech Group brand and is not available to purchase from any other manufacturer.

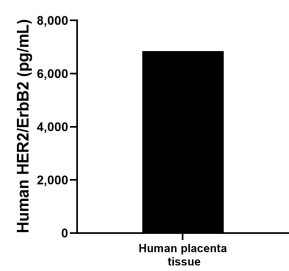
Selected Validation Data



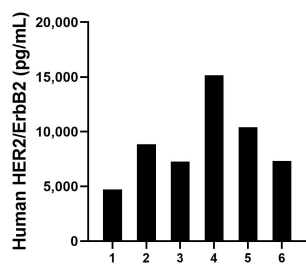
Sandwich ELISA standard curve of MP01080-1, Human HER2/Erbb2 Recombinant Matched Antibody Pair - PBS only. 84182-2-PBS was coated to a plate as the capture antibody and incubated with serial dilutions of standard RP02350. 84182-3-PBS was HRP conjugated as the detection antibody. Range: 19.5-1250 pg/mL



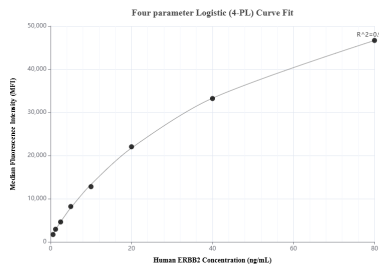
Human milk of six individual healthy human donors was measured. The human HER2/Erbb2 concentration of detected samples was determined to be 969.9 pg/mL with a range of 654.3 - 1,208.0 pg/mL



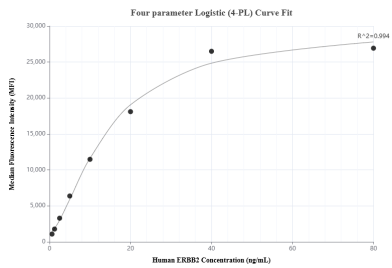
The mean HER2/Erbb2 concentration was determined to be 6,844.8 pg/mL in human placenta tissue extract based on a 2.9 mg/mL extract load.



Serum of six individual healthy human donors was measured. The human HER2/Erbb2 concentration of detected samples was determined to be 8,952.9 pg/mL with a range of 4,726.1 - 15,157.7 pg/mL



Cytometric bead array standard curve of MP01080-1, HER2/ERBB2 Recombinant Matched Antibody Pair, PBS Only. Capture antibody: 84182-2-PBS. Detection antibody: 84182-3-PBS. Standard: RP02350. Range: 0.625-80 ng/mL



Cytometric bead array standard curve of MP01080-3, ERBB2 Recombinant Matched Antibody Pair, PBS Only. Capture antibody: 84182-3-PBS. Detection antibody: 84182-1-PBS. Standard: RP02350. Range: 0.625-80 ng/mL