

For Research Use Only

# MED6 Recombinant antibody, PBS Only (Capture)

Catalog Number: 84184-4-PBS



## Basic Information

<b>Catalog Number:</b> 84184-4-PBS	<b>GenBank Accession Number:</b> BC004106	<b>Purification Method:</b> Protein A purification
<b>Size:</b> 100ug , Concentration: 1 mg/ml by Nanodrop;	<b>GeneID (NCBI):</b> 10001	<b>CloneNo.:</b> 241382H2
<b>Source:</b> Rabbit	<b>UNIPROT ID:</b> O75586	
<b>Isotype:</b> IgG	<b>Full Name:</b> mediator complex subunit 6	
<b>Immunogen Catalog Number:</b> AG7541	<b>Calculated MW:</b> 28 kDa	
	<b>Observed MW:</b> 33 kDa	

## Applications

**Tested Applications:**  
WB, IF/ICC, FC (Intra), Cytometric bead array, Sandwich ELISA, Indirect ELISA, Sample test

**Species Specificity:**  
human, mouse

## Product Information

84184-4-PBS targets MED6 as part of a matched antibody pair:

MP01087-3: 84184-4-PBS capture and 84184-2-PBS detection (validated in Cytometric bead array, Sandwich ELISA)

Unconjugated rabbit recombinant monoclonal antibody in PBS only (BSA and azide free) storage buffer at a concentration of 1 mg/mL, ready for conjugation. Created using Proteintech's proprietary in-house recombinant technology. Recombinant production enables unrivalled batch-to-batch consistency, easy scale-up, and future security of supply.

This conjugation ready format makes antibodies ideal for use in many applications including: ELISAs, multiplex assays requiring matched pairs, mass cytometry, and multiplex imaging applications. Antibody use should be optimized by the end user for each application and assay.

## Background Information

MED6 is a part of mediator complex. Mediator functions as a bridge to convey information from gene-specific regulatory proteins to the basal RNA polymerase II transcription machinery. Mediator is recruited to promoters by direct interactions with regulatory proteins and serves as a scaffold for the assembly of a functional preinitiation complex with RNA polymerase II and the general transcription factors.

## Storage

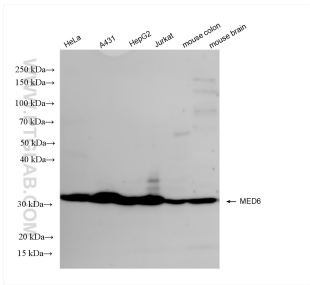
**Storage:**  
Store at -80°C.

**Storage Buffer:**  
PBS only, pH7.3

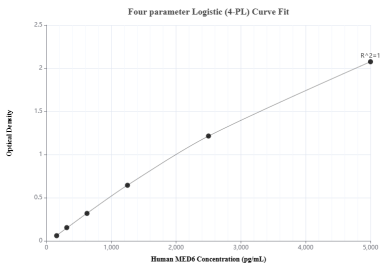
For technical support and original validation data for this product please contact:  
T: 1 (888) 4PTGLAB (1-888-478-4522) (toll free in USA), or 1(312) 455-8498 (outside USA)  
E: [proteintech@ptglab.com](mailto:proteintech@ptglab.com)  
W: [ptglab.com](http://ptglab.com)

This product is exclusively available under Proteintech Group brand and is not available to purchase from any other manufacturer.

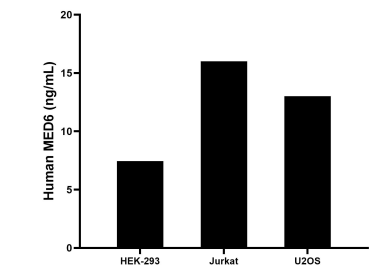
Selected Validation Data



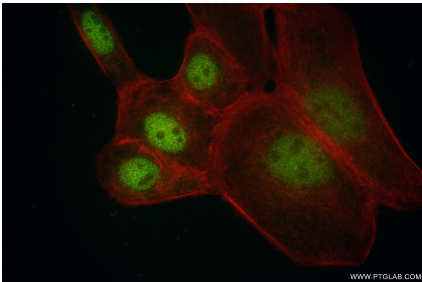
Various lysates were subjected to SDS PAGE followed by western blot with 84184-4-RR (MED6 antibody) at dilution of 1:10000 incubated at room temperature for 1.5 hours. This data was developed using the same antibody clone with 84184-4-PBS in a different storage buffer formulation.



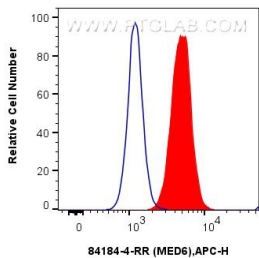
Sandwich ELISA standard curve of MP01087-3, Human MED6 Recombinant Matched Antibody Pair - PBS only. 84184-4-PBS was coated to a plate as the capture antibody and incubated with serial dilutions of standard Ag7541. 84184-2-PBS was HRP conjugated as the detection antibody. Range: 156-5000 pg/mL



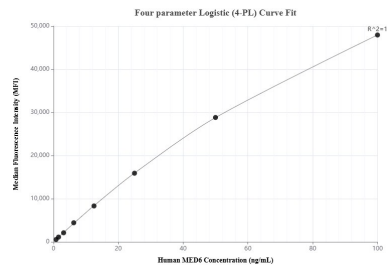
The mean MED6 concentration was determined to be 7.45 ng/mL in HEK-293 cell extract based on a 1.5 mg/mL extract load, 16.00 ng/mL in Jurkat cell extract based on a 1.5 mg/mL extract load and 13.01 ng/mL in U2OS cell extract based on a 3.1 mg/mL extract load.



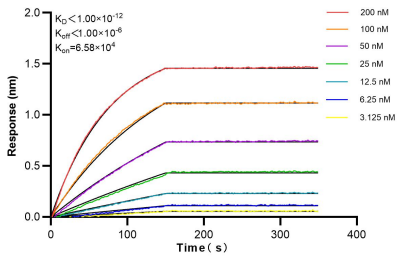
Immunofluorescent analysis of (4% PFA) fixed A431 cells using MED6 antibody (84184-4-RR, Clone: 241382H2) at dilution of 1:500 and CoraLite®488-Conjugated Goat Anti-Rabbit IgG(H+L) (SA00013-2), CL594-Phalloidin (red). This data was developed using the same antibody clone with 84184-4-PBS in a different storage buffer formulation.



$1 \times 10^6$  A431 cells were intracellularly stained with 0.25 ug MED6 Recombinant antibody (84184-4-RR, Clone:241382H2) and APC-Conjugated Goat Anti-Rabbit IgG(H+L)(red), or 0.25 ug Isotype Control (blue). Cells were fixed and permeabilized with True-Nuclear Transcription Factor Buffer Set. This data was developed using the same antibody clone with 84184-4-PBS in a different storage buffer formulation.



Cytometric bead array standard curve of MP01087-3, MED6 Recombinant Matched Antibody Pair, PBS Only. Capture antibody: 84184-4-PBS. Detection antibody: 84184-2-PBS. Standard: Ag7541. Range: 0.781-100 ng/mL



Biolayer interferometry (BLI) kinetic assays of 84184-4-RR against Human MED6 were performed. The affinity constant is below 1 pM.