

For Research Use Only

MED6 Recombinant antibody

Catalog Number: 84184-4-RR



Basic Information

Catalog Number: 84184-4-RR	GenBank Accession Number: BC004106	Purification Method: Protein A purification
Size: 100ul , Concentration: 1000 µg/ml by Nanodrop;	GeneID (NCBI): 10001	CloneNo.: 241382H2
Source: Rabbit	UNIPROT ID: O75586	Recommended Dilutions: WB 1:5000-1:50000 IF/ICC 1:250-1:1000
Isotype: IgG	Full Name: mediator complex subunit 6	
Immunogen Catalog Number: AG7541	Calculated MW: 28 kDa	
	Observed MW: 33 kDa	

Applications

Tested Applications: WB, FC (Intra), ELISA	Positive Controls:
Species Specificity: human, mouse	WB : HeLa cells, A431 cells, HepG2 cells, Jurkat cells, mouse colon tissue, mouse brain tissue
	IF/ICC : A431 cells,

Background Information

MED6 is a part of mediator complex. Mediator functions as a bridge to convey information from gene-specific regulatory proteins to the basal RNA polymerase II transcription machinery. Mediator is recruited to promoters by direct interactions with regulatory proteins and serves as a scaffold for the assembly of a functional preinitiation complex with RNA polymerase II and the general transcription factors.

Storage

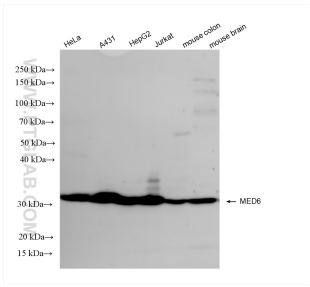
Storage:
Store at -20°C. Stable for one year after shipment.
Storage Buffer:
PBS with 0.02% sodium azide and 50% glycerol, pH7.3
Aliquoting is unnecessary for -20°C storage

*** 20ul sizes contain 0.1% BSA

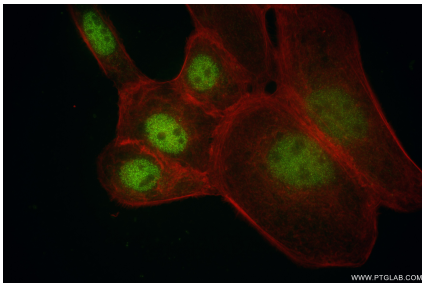
For technical support and original validation data for this product please contact:
T: 1 (888) 4PTGLAB (1-888-478-4522) (toll free in USA), or 1(312) 455-8498 (outside USA)
E: proteintech@ptglab.com
W: ptglab.com

This product is exclusively available under Proteintech Group brand and is not available to purchase from any other manufacturer.

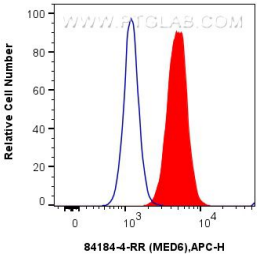
Selected Validation Data



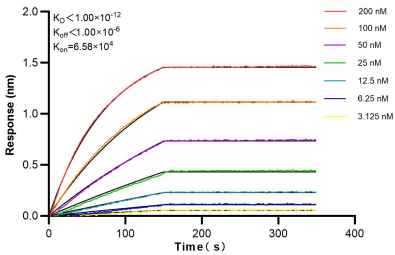
Various lysates were subjected to SDS PAGE followed by western blot with 84184-4-RR (MED6 antibody) at dilution of 1:10000 incubated at room temperature for 1.5 hours.



Immunofluorescent analysis of (4% PFA) fixed A431 cells using MED6 antibody (84184-4-RR, Clone: 241382H2) at dilution of 1:500 and CoraLite®488-Conjugated Goat Anti-Rabbit IgG(H+L) (SA00013-2), CL594-Phalloidin (red).



1x10⁶ A431 cells were intracellularly stained with 0.25 ug MED6 Recombinant antibody (84184-4-RR, Clone:241382H2) and APC-Conjugated Goat Anti-Rabbit IgG(H+L)(red), or 0.25 ug Isotype Control (blue). Cells were fixed and permeabilized with True-Nuclear Transcription Factor Buffer Set.



Biolayer interferometry (BLI) kinetic assays of 84184-4-RR against Human MED6 were performed. The affinity constant is below 1 pM.