

For Research Use Only

Ki-67 Recombinant antibody, PBS Only

Catalog Number: 84192-3-PBS



Basic Information

Catalog Number: 84192-3-PBS	GenBank Accession Number: NM_002417	Purification Method: Protein A purification
Size: 100ug , Concentration: 1 mg/ml by Nanodrop;	GeneID (NCBI): 4288	CloneNo.: 241499B1
Source: Rabbit	UNIPROT ID: P46013	
Isotype: IgG	Full Name: antigen identified by monoclonal antibody Ki-67	
	Calculated MW: 359 kDa	

Applications

Tested Applications:
WB, IHC, IF/ICC, IF-P, Indirect ELISA

Species Specificity:
human

Background Information

The Ki-67 protein (also known as MKI67) is a cellular marker for proliferation. Ki67 is present during all active phases of the cell cycle (G1, S, G2 and M), but is absent in resting cells (G0). Cellular content of Ki-67 protein markedly increases during cell progression through S phase of the cell cycle. Therefore, the nuclear expression of Ki67 can be evaluated to assess tumor proliferation by immunohistochemistry. It has been demonstrated to be of prognostic value in breast cancer. In head and neck cancer, several studies have reported an association between high proliferative activity and poorer prognosis.

Storage

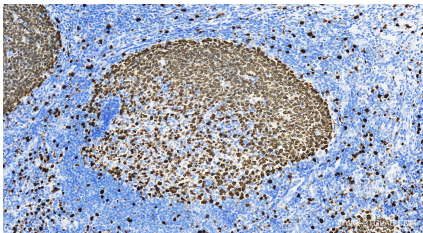
Storage:
Store at -80°C.

Storage Buffer:
PBS only, pH7.3

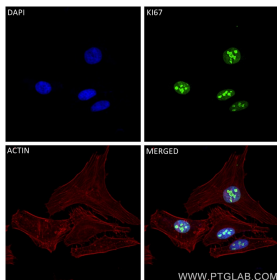
For technical support and original validation data for this product please contact:
T: 1 (888) 4PTGLAB (1-888-478-4522) (toll free in USA), or 1(312) 455-8498 (outside USA)
E: proteintech@ptglab.com
W: ptglab.com

This product is exclusively available under Proteintech Group brand and is not available to purchase from any other manufacturer.

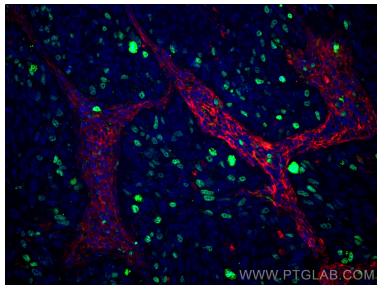
Selected Validation Data



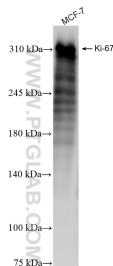
Immunohistochemical analysis of paraffin-embedded human tonsillitis tissue slide using 84192-3-RR (Ki67 antibody) at dilution of 1:2000 (under 40x lens). Heat mediated antigen retrieval with Tris-EDTA buffer (pH 9.0). This data was developed using the same antibody clone with 84192-3-PBS in a different storage buffer formulation.



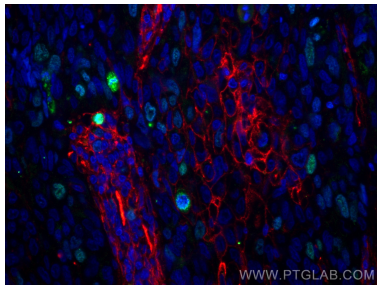
Immunofluorescent analysis of (4% PFA) fixed HeLa cells using Ki67 antibody (84192-3-RR, Clone: 241499B1) at dilution of 1:250 and CoraLite®488-Conjugated Goat Anti-Rabbit IgG(H+L) (SA00013-2), CL594-Phalloidin (red). This data was developed using the same antibody clone with 84192-3-PBS in a different storage buffer formulation.



Immunofluorescent analysis of (4% PFA) fixed paraffin-embedded human lung cancer tissue using Ki67 antibody (84192-3-RR, Clone: 241499B1) at dilution of 1:200 and Multi-rAb CoraLite® Plus 488-Goat Anti-Rabbit Recombinant Secondary Antibody (H+L) (RGAR002), ICAM-1 antibody (60299-1-Ig, Clone: 2F9A8, red). Heat mediated antigen retrieval with Tris-EDTA buffer (pH 9.0). This data was developed using the same antibody clone with 84192-3-PBS in a different storage buffer formulation.



MCF-7 cells were subjected to SDS PAGE followed by western blot with 84192-3-RR (Ki-67 antibody) at dilution of 1:16000 incubated at room temperature for 1.5 hours. This data was developed using the same antibody clone with 84192-3-PBS in a different storage buffer formulation.



Immunofluorescent analysis of (4% PFA) fixed paraffin-embedded human lung cancer tissue using Ki67 antibody (84192-3-RR, Clone: 241499B1) at dilution of 1:200 and Multi-rAb CoraLite® Plus 488-Goat Anti-Rabbit Recombinant Secondary Antibody (H+L) (RGAR002), ICAM-1 antibody (60299-1-Ig, Clone: 2F9A8, red). Heat mediated antigen retrieval with Tris-EDTA buffer (pH 9.0). This data was developed using the same antibody clone with 84192-3-PBS in a different storage buffer formulation.