

For Research Use Only

KI67 Recombinant monoclonal antibody, PBS Only (Detector)

Catalog Number: 84192-9-PBS



Basic Information

Catalog Number:

84192-9-PBS

Size:

100ug, Concentration: 1 mg/ml by Nanodrop;

Source:

Rabbit

Isotype:

IgG

GenBank Accession Number:

NM_002417

GeneID (NCBI):

4288

UNIPROT ID:

P46013

Full Name:

antigen identified by monoclonal antibody Ki-67

Calculated MW:

359 kDa

Purification Method:

Protein A purification

CloneNo.:

241499A3

Applications

Tested Applications:

Sandwich ELISA, Indirect ELISA

Species Specificity:

human

Product Information

84192-9-PBS targets KI67 as part of a matched antibody pair.

MP01085-2: 84192-10-PBS capture and 84192-9-PBS detection (validated in Sandwich ELISA)

Unconjugated rabbit recombinant monoclonal antibody in PBS only (BSA and azide free) storage buffer at a concentration of 1 mg/mL, ready for conjugation. Created using Proteintech's proprietary in-house recombinant technology. Recombinant production enables unrivalled batch-to-batch consistency, easy scale-up, and future security of supply.

This conjugation ready format makes antibodies ideal for use in many applications including: ELISAs, multiplex assays requiring matched pairs, mass cytometry, and multiplex imaging applications. Antibody use should be optimized by the end user for each application and assay.

Storage

Storage:

Store at -80°C.

Storage Buffer:

PBS only, pH7.3

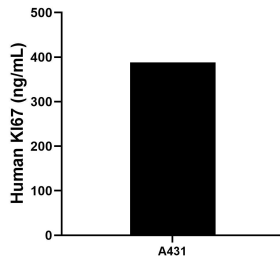
For technical support and original validation data for this product please contact:

T: 1 (888) 4PTGLAB (1-888-478-4522) (toll free in USA), or 1(312) 455-8498 (outside USA)

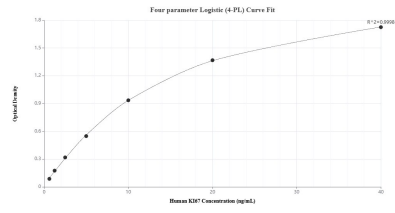
E: proteintech@ptglab.com
W: ptglab.com

This product is exclusively available under Proteintech Group brand and is not available to purchase from any other manufacturer.

Selected Validation Data



The mean Ki-67 concentration was determined to be 388.00 ng/mL in A431 cell extract based on a 1.2 mg/mL extract load.



Sandwich ELISA standard curve of MP01085-2, Human Ki-67 Recombinant Matched Antibody Pair - PBS only. 84192-10-PBS was coated to a plate as the capture antibody and incubated with serial dilutions of standard SY02291. 84192-9-PBS was HRP conjugated as the detection antibody. Range: 0.625-40 ng/mL