

For Research Use Only

# LIMPII Recombinant antibody, PBS Only (Capture)

Catalog Number: 84193-4-PBS

Featured Product



## Basic Information

<b>Catalog Number:</b> 84193-4-PBS	<b>GenBank Accession Number:</b> BC021892	<b>Purification Method:</b> Protein A purification
<b>Size:</b> 100ug, Concentration: 1 mg/ml by Nanodrop;	<b>GeneID (NCBI):</b> 950	<b>CloneNo.:</b> 241468F9
<b>Source:</b> Rabbit	<b>UNIPROT ID:</b> Q14108	
<b>Isotype:</b> IgG	<b>Full Name:</b> scavenger receptor class B, member 2	
<b>Immunogen Catalog Number:</b> AG25908	<b>Calculated MW:</b> 478 aa, 54 kDa	
	<b>Observed MW:</b> 75 kDa	

## Applications

**Tested Applications:**  
WB, Sandwich ELISA, Indirect ELISA, Sample test

**Species Specificity:**  
human

## Product Information

84193-4-PBS targets LIMPII as part of a matched antibody pair:

MP01086-4: 84193-4-PBS capture and 84193-3-PBS detection (validated in Sandwich ELISA)

Unconjugated rabbit recombinant monoclonal antibody in PBS only (BSA and azide free) storage buffer at a concentration of 1 mg/mL, ready for conjugation. Created using Proteintech's proprietary in-house recombinant technology. Recombinant production enables unrivalled batch-to-batch consistency, easy scale-up, and future security of supply.

This conjugation ready format makes antibodies ideal for use in many applications including: ELISAs, multiplex assays requiring matched pairs, mass cytometry, and multiplex imaging applications. Antibody use should be optimized by the end user for each application and assay.

## Storage

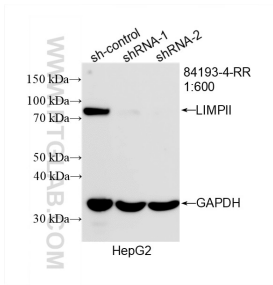
**Storage:**  
Store at -80°C.

**Storage Buffer:**  
PBS only, pH7.3

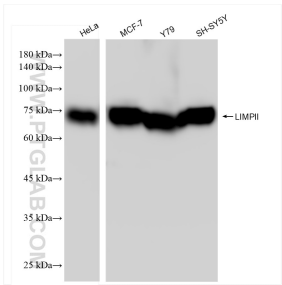
For technical support and original validation data for this product please contact:  
T: 1 (888) 4PTGLAB (1-888-478-4522) (toll free in USA), or 1(312) 455-8498 (outside USA)  
E: [proteintech@ptglab.com](mailto:proteintech@ptglab.com)  
W: [ptglab.com](http://ptglab.com)

This product is exclusively available under Proteintech Group brand and is not available to purchase from any other manufacturer.

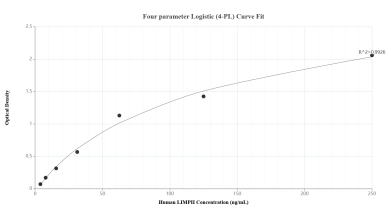
Selected Validation Data



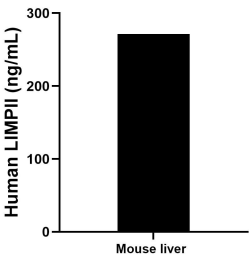
WB result of LIMPII antibody (84193-4-RR; 1:600; incubated at room temperature for 1.5 hours) with sh-Control and sh-LIMPII transfected HepG2 cells. This data was developed using the same antibody clone with 84193-4-PBS in a different storage buffer formulation.



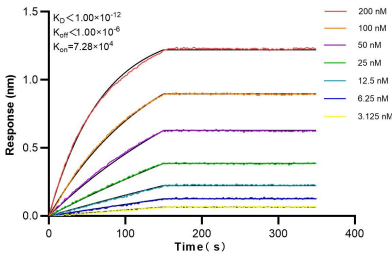
Various lysates were subjected to SDS PAGE followed by western blot with 84193-4-RR (LIMPII antibody) at dilution of 1:5000 incubated at room temperature for 1.5 hours. This data was developed using the same antibody clone with 84193-4-PBS in a different storage buffer formulation.



Sandwich ELISA standard curve of MP01086-4, Human LIMPII Recombinant Matched Antibody Pair - PBS only. 84193-4-PBS was coated to a plate as the capture antibody and incubated with serial dilutions of standard Ag25908. 84193-3-PBS was HRP conjugated as the detection antibody. Range: 3.91-250 ng/mL.



The mean LIMPII concentration was determined to be 271.42 ng/mL in mouse liver tissue extract based on a 3.70 mg/mL extract load.



Biolayer interferometry (BLI) kinetic assays of 84193-4-RR against Human LIMPII were performed. The affinity constant is below 1 pM.