

For Research Use Only

SNTB1-Specific Recombinant antibody

Catalog Number: 84195-1-RR

Featured Product



Basic Information

Catalog Number:

84195-1-RR

Size:

100ul, Concentration: 1000 µg/ml by Nanodrop;

Source:

Rabbit

Isotype:

IgG

GenBank Accession Number:

NM_021021

GeneID (NCBI):

6641

UNIPROT ID:

Q13884

Full Name:

syntrophin, beta 1 (dystrophin-associated protein A1, 59kDa, basic component 1)

Calculated MW:

58 kDa

Observed MW:

58 kDa

Purification Method:

Protein A purification

CloneNo.:

241184F12

Recommended Dilutions:

WB 1:5000-1:50000

IP 0.5-4.0 ug for 1.0-3.0 mg of total protein lysate

Applications

Tested Applications:

WB, IP, ELISA

Species Specificity:

human, mouse

Positive Controls:

WB : HepG2 cells, mouse liver tissue

IP : HepG2 cells,

Background Information

SNTB1, also named as SNT2B1, BSYN2 and TIP-43, belongs to the syntrophin family. SNTB1 is an adapter protein that binds to and probably organizes the subcellular localization of a variety of membrane proteins. It may link various receptors to the actin cytoskeleton and the dystrophin glycoprotein complex. This antibody is specific to SNTB1.

Storage

Storage:

Store at -20°C. Stable for one year after shipment.

Storage Buffer:

PBS with 0.02% sodium azide and 50% glycerol pH 7.3.

Aliquoting is unnecessary for -20°C storage

*** 20ul sizes contain 0.1% BSA

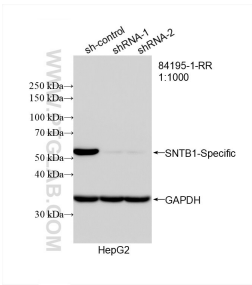
For technical support and original validation data for this product please contact:

T: 1 (888) 4PTGLAB (1-888-478-4522) (toll free in USA), or 1(312) 455-8498 (outside USA)

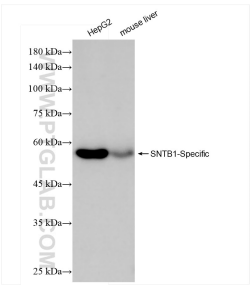
E: proteintech@ptglab.com
W: ptglab.com

This product is exclusively available under Proteintech Group brand and is not available to purchase from any other manufacturer.

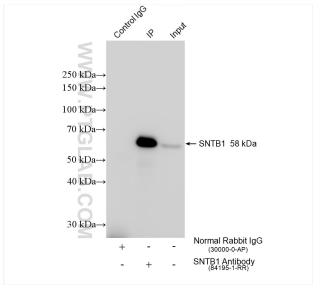
Selected Validation Data



WB result of SNTB1-Specific antibody (84195-1-RR; 1:1000; incubated at room temperature for 1.5 hours) with sh-Control and sh-SNTB1-Specific transfected HepG2 cells.



Various lysates were subjected to SDS PAGE followed by western blot with 84195-1-RR (SNTB1-Specific antibody) at dilution of 1:10000 incubated at room temperature for 1.5 hours.



IP result of anti-SNTB1-Specific (IP:84195-1-RR, 4ug; Detection:84195-1-RR 1:600) with HepG2 cells lysate 2000 ug.