

For Research Use Only

# CDK6 Recombinant antibody, PBS Only

Catalog Number: 84200-1-PBS



## Basic Information

**Catalog Number:**

84200-1-PBS

**Size:**

100ug , Concentration: 1 mg/ml by Nanodrop;

**Source:**

Rabbit

**Isotype:**

IgG

**Immunogen Catalog Number:**

AG5600

**GenBank Accession Number:**

BC027989

**GeneID (NCBI):**

1021

**UNIPROT ID:**

Q00534

**Full Name:**

cyclin-dependent kinase 6

**Calculated MW:**

326 aa, 36 kDa

**Observed MW:**

36-40 kDa

**Purification Method:**

Protein A purification

**CloneNo.:**

241022F11

## Applications

**Tested Applications:**

WB, IF/ICC, Indirect ELISA

**Species Specificity:**

human

## Background Information

CDK6(Cyclin-dependent kinase 6) is involved in initiation and maintenance of cell cycle exit during cell differentiation and it prevents cell proliferation and regulates negatively cell differentiation, but is required for the proliferation of specific cell types. The molecular weight of CDK6 is 36-40 KDa (PMID: 23563707, 8114739).

## Storage

**Storage:**

Store at -80°C.

**Storage Buffer:**

PBS Only

For technical support and original validation data for this product please contact:

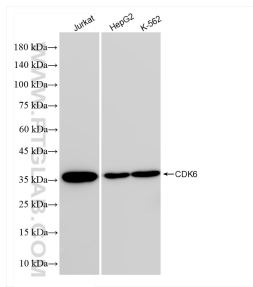
T: 1 (888) 4PTGLAB (1-888-478-4522) (toll free in USA), or 1(312) 455-8498 (outside USA)

E: [proteintech@ptglab.com](mailto:proteintech@ptglab.com)

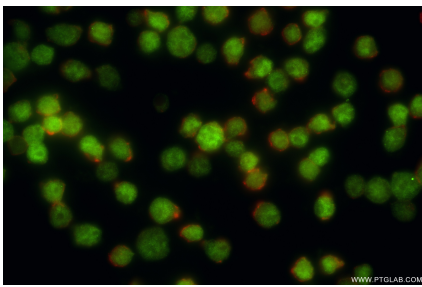
W: [ptglab.com](http://ptglab.com)

This product is exclusively available under Proteintech Group brand and is not available to purchase from any other manufacturer.

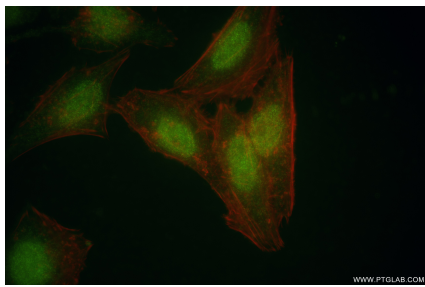
## Selected Validation Data



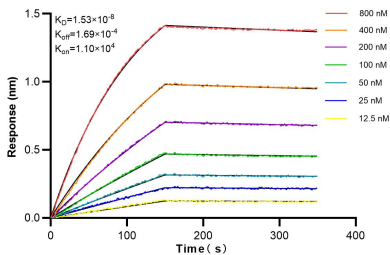
Various lysates were subjected to SDS PAGE followed by western blot with 84200-1-RR (CDK6 antibody) at dilution of 1:5000 incubated at room temperature for 1.5 hours. This data was developed using the same antibody clone with 84200-1-PBS in a different storage buffer formulation.



Immunofluorescent analysis of (4% PFA) fixed Jurkat cells using CDK6 antibody (84200-1-RR, Clone: 241022F11 ) at dilution of 1:400 and CoraLite®488-Conjugated Goat Anti-Rabbit IgG(H+L) (SA00013-2), CL594-Phalloidin (red). This data was developed using the same antibody clone with 84200-1-PBS in a different storage buffer formulation.



Immunofluorescent analysis of (4% PFA) fixed HeLa cells using CDK6 antibody (84200-1-RR, Clone: 241022F11 ) at dilution of 1:400 and CoraLite®488-Conjugated Goat Anti-Rabbit IgG(H+L) (SA00013-2), CL594-Phalloidin (red). This data was developed using the same antibody clone with 84200-1-PBS in a different storage buffer formulation.



Biolayer interferometry (BLI) kinetic assays of 84200-1-RR against Human CDK6 were performed. The affinity constant is 15.3 nM.