

For Research Use Only

CDK6 Recombinant antibody

Catalog Number: 84200-1-RR



Basic Information

| | | |
|--|--|--|
| Catalog Number: 84200-1-RR | GenBank Accession Number: BC027989 | Purification Method: Protein A purification |
| Size: 100ul , Concentration: 1000 µg/ml by Nanodrop; | GeneID (NCBI): 1021 | CloneNo.: 241022F11 |
| Source: Rabbit | UNIPROT ID: Q00534 | Recommended Dilutions: WB 1:2000-1:10000 IF/ICC 1:200-1:800 |
| Isotype: IgG | Full Name: cyclin-dependent kinase 6 | |
| Immunogen Catalog Number: AG5600 | Calculated MW: 326 aa, 36 kDa | |
| | Observed MW: 36-40 kDa | |

Applications

| | |
|--|--|
| Tested Applications: WB, IF/ICC, ELISA | Positive Controls: |
| Species Specificity: human | WB : Jurkat cells, HepG2 cells, K-562 cells IF/ICC : HeLa cells, Jurkat cells |

Background Information

CDK6(Cyclin-dependent kinase 6) is involved in initiation and maintenance of cell cycle exit during cell differentiation and it prevents cell proliferation and regulates negatively cell differentiation, but is required for the proliferation of specific cell types. The molecular weight of CDK6 is 36-40 KDa (PMID: 23563707, 8114739).

Storage

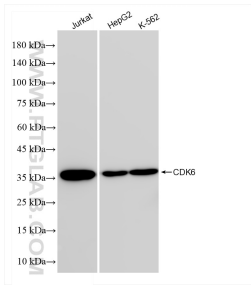
Storage:
Store at -20°C. Stable for one year after shipment.
Storage Buffer:
PBS with 0.02% sodium azide and 50% glycerol pH 7.3.
Aliquoting is unnecessary for -20°C storage

*** 20ul sizes contain 0.1% BSA

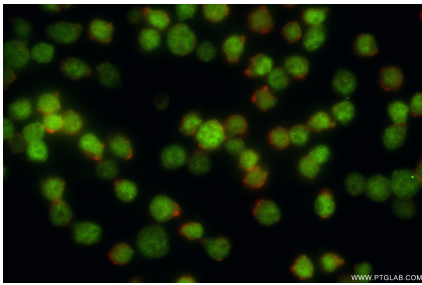
For technical support and original validation data for this product please contact:
T: 1 (888) 4PTGLAB (1-888-478-4522) (toll free in USA), or 1(312) 455-8498 (outside USA)
E: proteintech@ptglab.com
W: ptglab.com

This product is exclusively available under Proteintech Group brand and is not available to purchase from any other manufacturer.

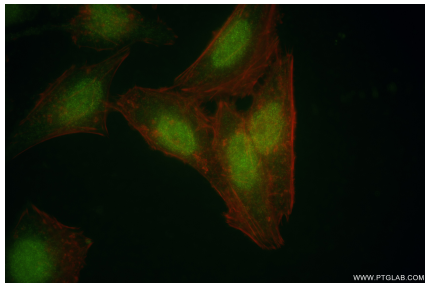
Selected Validation Data



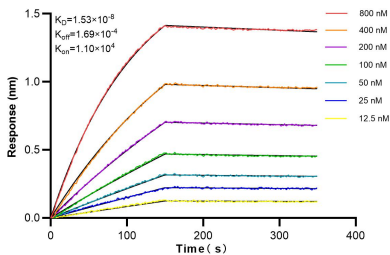
Various lysates were subjected to SDS PAGE followed by western blot with 84200-1-RR (CDK6 antibody) at dilution of 1:5000 incubated at room temperature for 1.5 hours.



Immunofluorescent analysis of (4% PFA) fixed Jurkat cells using CDK6 antibody (84200-1-RR, Clone: 241022F11) at dilution of 1:400 and Coralite®488-Conjugated Goat Anti-Rabbit IgG(H+L) (SA00013-2), CL594-Phalloidin (red).



Immunofluorescent analysis of (4% PFA) fixed HeLa cells using CDK6 antibody (84200-1-RR, Clone: 241022F11) at dilution of 1:400 and Coralite®488-Conjugated Goat Anti-Rabbit IgG(H+L) (SA00013-2), CL594-Phalloidin (red).



Biolayer interferometry (BLI) kinetic assays of 84200-1-RR against Human CDK6 were performed. The affinity constant is 15.3 nM.