

For Research Use Only

ABCC5 Recombinant antibody, PBS Only

Catalog Number: 84204-5-PBS



Basic Information

Catalog Number: 84204-5-PBS	GenBank Accession Number: NM_005688	Purification Method: Protein A purification
Size: 100ug , Concentration: 1 mg/ml by Nanodrop;	GeneID (NCBI): 10057	CloneNo.: 241380G1
Source: Rabbit	UNIPROT ID: O15440	
Isotype: IgG	Full Name: ATP-binding cassette, sub-family C (CFTR/MRP), member 5	
Immunogen Catalog Number: AG31680	Calculated MW: 161 kDa	
	Observed MW: 161-200 kDa	

Applications

Tested Applications:
WB, IHC, IF/ICC, Indirect ELISA

Species Specificity:
human

Background Information

ABCC5, also named MOAT-C, pABC11, SMRP, and MRP5, belongs to the ABC transporter superfamily, ABCC family, and Conjugate transporter (TC 3.A.1.208) subfamily. ABCC5 acts as a multispecific organic anion pump that can transport nucleotide analogs. ABCC5 functions in the cellular export of its substrate, cyclic nucleotides. This export contributes to the degradation of phosphodiesterases and possibly an elimination pathway for cyclic nucleotides. Studies show that ABCC5 provides resistance to thiopurine anticancer drugs, 6-mercaptopurine and thioguanine, and the anti-HIV drug 9-(2-phosphonylmethoxyethyl) adenine. ABCC5 may be involved in resistance to thiopurines in acute lymphoblastic leukemia and antiretroviral nucleoside analogs in HIV-infected patients. Alternative splicing of this gene has been detected; however, the complete sequence and translation initiation site are unclear. Since it is glycosylated, the apparent molecular weight of ABCC5 could be variable, ranging from 161 kDa to 200 kDa (PMID: 10893247; PMID: 15897250; PMID: 31338999).

Storage

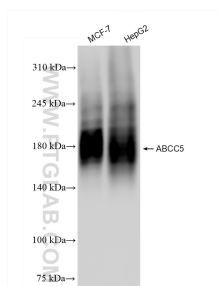
Storage:
Store at -80°C.

Storage Buffer:
PBS Only

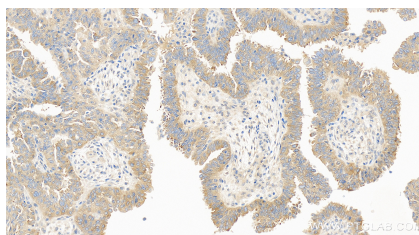
For technical support and original validation data for this product please contact:
T: 1 (888) 4PTGLAB (1-888-478-4522) (toll free in USA), or 1(312) 455-8498 (outside USA)
E: proteintech@ptglab.com
W: ptglab.com

This product is exclusively available under Proteintech Group brand and is not available to purchase from any other manufacturer.

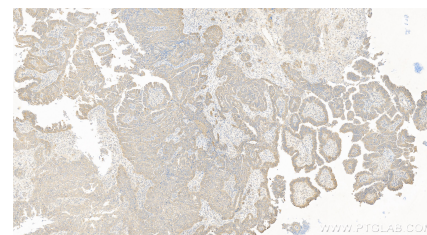
Selected Validation Data



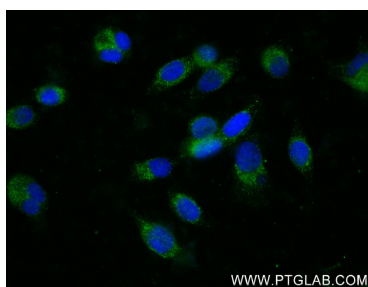
MCF-7 cells were subjected to SDS PAGE followed by western blot with 84204-5-RR (ABCC5 antibody) at dilution of 1:3000 incubated at room temperature for 1.5 hours. This data was developed using the same antibody clone with 84204-5-PBS in a different storage buffer formulation.



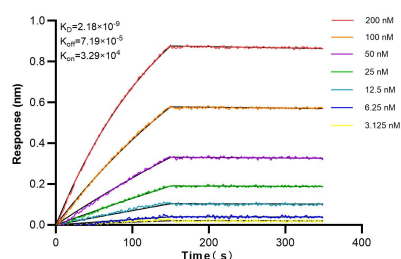
Immunohistochemical analysis of paraffin-embedded human ovary cancer tissue slide using 84204-5-RR (ABCC5 antibody) at dilution of 1:200 (under 40x lens). Heat mediated antigen retrieval with Tris-EDTA buffer (pH 9.0). This data was developed using the same antibody clone with 84204-5-PBS in a different storage buffer formulation.



Immunohistochemical analysis of paraffin-embedded human ovary cancer tissue slide using 84204-5-RR (ABCC5 antibody) at dilution of 1:200 (under 10x lens). Heat mediated antigen retrieval with Tris-EDTA buffer (pH 9.0). This data was developed using the same antibody clone with 84204-5-PBS in a different storage buffer formulation.



Immunofluorescent analysis of (4% PFA) fixed PC-3 cells using ABCC5 antibody (84204-5-RR, Clone: 241380G1) at dilution of 1:0 and CoraLite® 488-Conjugated Goat Anti-Rabbit IgG(H+L) (SA00013-2). This data was developed using the same antibody clone with 84204-5-PBS in a different storage buffer formulation.



Biolayer interferometry (BLI) kinetic assays of 84204-5-RR against Human ABCC5 were performed. The affinity constant is 2.18 nM.