

For Research Use Only

Rat CD90/Thy1 Recombinant antibody, PBS Only (Capture)

Catalog Number: 84206-3-PBS



Basic Information

Catalog Number: 84206-3-PBS	GenBank Accession Number: NM_012673.2	Purification Method: Protein A purification
Size: 100ug , Concentration: 1 mg/ml by Nanodrop;	GeneID (NCBI): 24832	CloneNo.: 241388E2
Source: Rabbit	UNIPROT ID: P01830	
Isotype: IgG	Full Name: Thy-1 cell surface antigen	
	Calculated MW: 18 kDa	
	Observed MW: 25 kDa	

Applications

Tested Applications:
WB, IF/ICC, Cytometric bead array, Indirect ELISA

Species Specificity:
rat

Product Information

84206-3-PBS targets CD90/Thy1 as part of a matched antibody pair:

MP01132-1: 84206-3-PBS capture and 84206-1-PBS detection (validated in Cytometric bead array)

MP01132-2: 84206-3-PBS capture and 84206-2-PBS detection (validated in Cytometric bead array)

Unconjugated rabbit recombinant monoclonal antibody in PBS only (BSA and azide free) storage buffer at a concentration of 1 mg/mL, ready for conjugation. Created using Proteintech's proprietary in-house recombinant technology. Recombinant production enables unrivalled batch-to-batch consistency, easy scale-up, and future security of supply.

This conjugation ready format makes antibodies ideal for use in many applications including: ELISAs, multiplex assays requiring matched pairs, mass cytometry, and multiplex imaging applications. Antibody use should be optimized by the end user for each application and assay.

Background Information

CD90, also known as THY1, is a 25-35 kD protein that is expressed on 1-4% of human fetal liver cells, cord blood cells, and bone marrow cells. CD90 is one of the essential surface molecules expressed on human MSC from bone marrow and other sources. Activation of Thy-1 has been reported to promote T cell activation. It also affects numerous nonimmunologic biological processes, including cellular adhesion, neurite outgrowth, tumor growth, migration, and cell death.

Storage

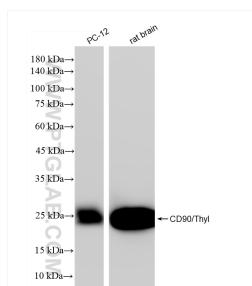
Storage:
Store at -80°C.

Storage Buffer:
PBS Only

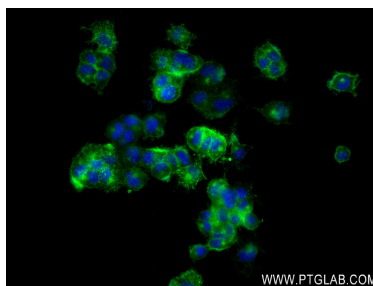
For technical support and original validation data for this product please contact:
T: 1 (888) 4PTGLAB (1-888-478-4522) (toll free in USA), or 1(312) 455-8498 (outside USA)
E: proteintech@ptglab.com
W: ptglab.com

This product is exclusively available under Proteintech Group brand and is not available to purchase from any other manufacturer.

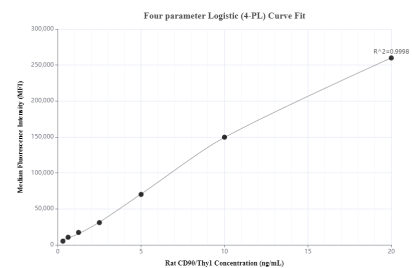
Selected Validation Data



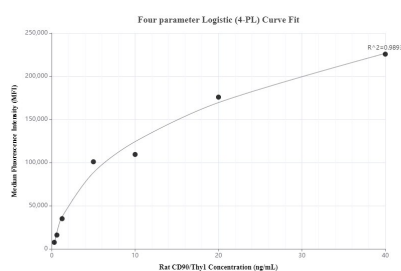
Various lysates were subjected to SDS PAGE followed by western blot with 84206-3-RR (CD90/Thy1 antibody) at dilution of 1:10000 incubated at room temperature for 1.5 hours. This data was developed using the same antibody clone with 84206-3-PBS in a different storage buffer formulation.



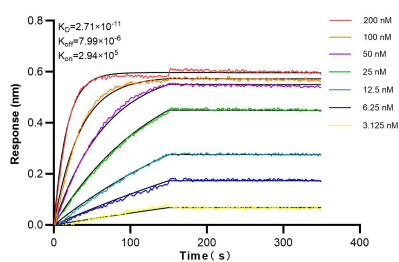
Immunofluorescent analysis of (4% PFA) fixed PC-12 cells using CD90/Thy1 antibody (84206-3-RR, Clone: 241388E2) at dilution of 1:200 and CoraLite®488-Conjugated Goat Anti-Rabbit IgG(H+L) (SA00013-2). This data was developed using the same antibody clone with 84206-3-PBS in a different storage buffer formulation.



Cytometric bead array standard curve of MP01132-1, RAT CD90/Thy1 Recombinant Matched Antibody Pair, PBS Only. Capture antibody: 84206-3-PBS. Detection antibody: 84206-1-PBS. Standard: Eg1463. Range: 0.313-20 ng/mL.



Cytometric bead array standard curve of MP01132-2, RAT CD90/Thy1 Recombinant Matched Antibody Pair, PBS Only. Capture antibody: 84206-3-PBS. Detection antibody: 84206-2-PBS. Standard: Eg1463. Range: 0.313-40 ng/mL.



Biolayer interferometry (BLI) kinetic assays of 84206-3-RR against Rat CD90/Thy1 were performed. The affinity constant is 27.1 pM.