

For Research Use Only

METTL6 Recombinant antibody

Catalog Number: 84209-5-RR



Basic Information

Catalog Number: 84209-5-RR	GenBank Accession Number: BC022400	Purification Method: Protein A purification
Size: 100ul , Concentration: 1000 ug/ml by Nanodrop;	GeneID (NCBI): 131965	CloneNo.: 241482F9
Source: Rabbit	UNIPROT ID: Q8TCB7	Recommended Dilutions: IF/ICC 1:125-1:500
Isotype: IgG	Full Name: methyltransferase like 6	
Immunogen Catalog Number: AG9714	Calculated MW: 255 aa, 30 kDa	

Applications

Tested Applications: IF/ICC, ELISA	Positive Controls: IF/ICC : HeLa cells,
Species Specificity: human	

Background Information

Methyltransferase-like protein 6 (METTL6) belongs to the METL family. METTL6 is as a crucial regulator of tumor cell growth, and METTL6 is a bona fide transfer RNA (tRNA) methyltransferase, catalyzing the formation of 3-methylcytidine at C32 of specific serine tRNA isoacceptors (PMID:32923617). METTL6 is a member of the RNA methyltransferase family that has been identified in many cancers. The mRNA expression levels of METTL6 were significantly upregulated in HCC tumor tissues compared to that in adjacent nontumor tissues. CRISPR/Cas9mediated knockout of METTL6 in hepatocellular carcinoma cell lines remarkably inhibited colony formation, cell proliferation, cell migration, cell invasion and cell attachment ability (PMID:34913069).

Storage

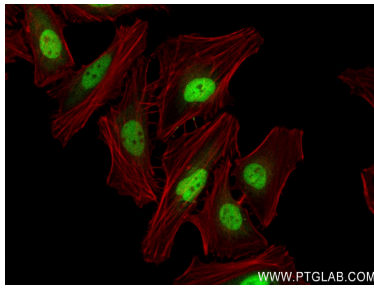
Storage:
Store at -20°C. Stable for one year after shipment.
Storage Buffer:
PBS with 0.02% sodium azide and 50% glycerol pH 7.3.
Aliquoting is unnecessary for -20°C storage

*** 20ul sizes contain 0.1% BSA

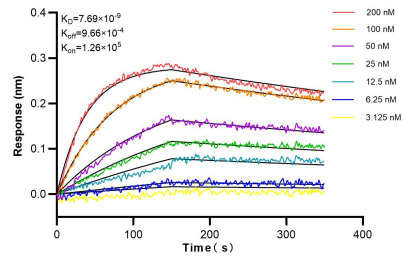
For technical support and original validation data for this product please contact:
T: 1 (888) 4PTGLAB (1-888-478-4522) (toll free in USA), or 1(312) 455-8498 (outside USA)
E: proteintech@ptglab.com
W: ptglab.com

This product is exclusively available under Proteintech Group brand and is not available to purchase from any other manufacturer.

Selected Validation Data



Immunofluorescent analysis of (4% PFA) fixed HeLa cells using METTL6 antibody (84209-5-RR, Clone: 241482F9) at dilution of 1:250 and CoraLite®488-Conjugated Goat Anti-Rabbit IgG(H+L) (SA00013-2), CL594-Phalloidin (red).



Biolayer interferometry (BLI) kinetic assays of 84209-5-RR against Human METTL6 were performed. The affinity constant is 7.69 nM.