

For Research Use Only

Mouse CD23/Fc epsilon RII Recombinant antibody, PBS Only (Detector)

Catalog Number: 84212-3-PBS



Basic Information

Catalog Number: 84212-3-PBS	GenBank Accession Number: EDL21948.1	Purification Method: Protein A purification
Size: 100ug , Concentration: 1 mg/ml by Nanodrop;	GeneID (NCBI): 14128	CloneNo.: 241385C9
Source: Rabbit	UNIPROT ID: P20693-1	
Isotype: IgG	Full Name: Fc receptor, IgE, low affinity II, alpha polypeptide	
Immunogen Catalog Number: EG1295	Calculated MW: 38kDa	
	Observed MW: 46 kDa	

Applications

Tested Applications:
WB, IHC, Sandwich ELISA, Indirect ELISA, Sample test

Species Specificity:
mouse

Product Information

84212-3-PBS targets CD23/Fc epsilon RII as part of a matched antibody pair:

MP01134-2: 84212-4-PBS capture and 84212-3-PBS detection (validated in Sandwich ELISA)

Unconjugated rabbit recombinant monoclonal antibody in PBS only (BSA and azide free) storage buffer at a concentration of 1 mg/mL, ready for conjugation. Created using Proteintech's proprietary in-house recombinant technology. Recombinant production enables unrivalled batch-to-batch consistency, easy scale-up, and future security of supply.

This conjugation ready format makes antibodies ideal for use in many applications including: ELISAs, multiplex assays requiring matched pairs, mass cytometry, and multiplex imaging applications. Antibody use should be optimized by the end user for each application and assay.

Background Information

CD23/Fc ϵ RII) is a low-affinity receptor for immunoglobulin E (IgE) and CR2/CD21, involved in B cell differentiation and IgE regulation. Two forms of Fc ϵ RII (Fc ϵ RIIa and Fc ϵ RIIb) were found to exist, which differ in structure only in the N-terminal cytoplasmic region, and Fc ϵ RIIa and Fc ϵ RIIb play roles in effector cells of B-cell and IgE-mediated immunity, respectively. On B cells, initiates IgE-dependent antigen uptake and presentation to T cells. On macrophages, after IgE binding and antigen cross-linking, intracellular killing of parasites is induced by activation of the L-arginine-nitric oxide pathway.

Storage

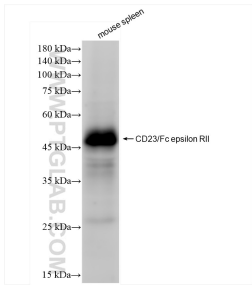
Storage:
Store at -80°C.

Storage Buffer:
PBS only, pH7.3

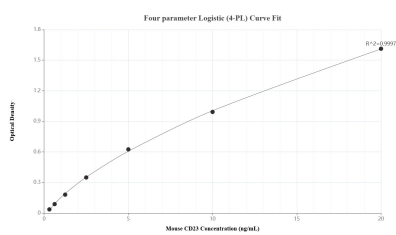
For technical support and original validation data for this product please contact:
T: 1 (888) 4PTGLAB (1-888-478-4522) (toll free in USA), or 1(312) 455-8498 (outside USA)
E: proteintech@ptglab.com
W: ptglab.com

This product is exclusively available under Proteintech Group brand and is not available to purchase from any other manufacturer.

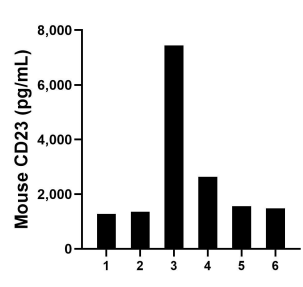
Selected Validation Data



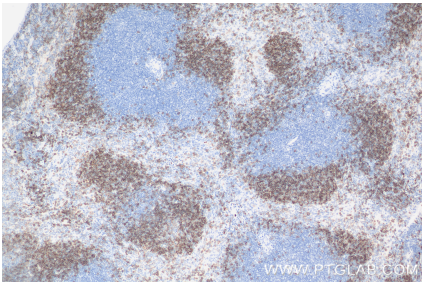
mouse spleen tissue were subjected to SDS PAGE followed by western blot with 84212-3-RR (CD23/Fc epsilon RI antibody) at dilution of 1:5000 incubated at room temperature for 1.5 hours. This data was developed using the same antibody clone with 84212-3-PBS in a different storage buffer formulation.



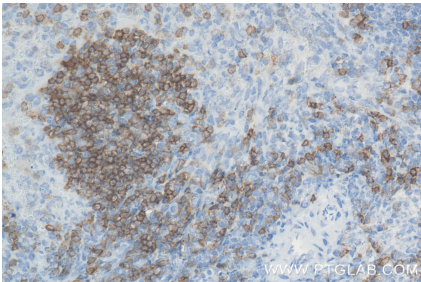
Sandwich ELISA standard curve of MP01134-2, Mouse CD23 Recombinant Matched Antibody Pair - PBS only. 84212-4-PBS was coated to a plate as the capture antibody and incubated with serial dilutions of standard Eg1295. 84212-3-PBS was HRP conjugated as the detection antibody. Range: 0.313-20 ng/mL.



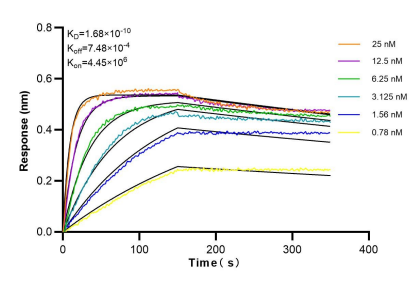
Serum of six mouse was measured. The CD23 concentration of detected samples was determined to be 2624.00 pg/mL with a range of 1279.00 - 7445.00 pg/mL.



Immunohistochemical analysis of paraffin-embedded mouse spleen tissue slide using 84212-3-RR (CD23/Fc epsilon RI antibody) at dilution of 1:1000 (under 10x lens). Heat mediated antigen retrieval with Tris-EDTA buffer (pH 9.0). This data was developed using the same antibody clone with 84212-3-PBS in a different storage buffer formulation.



Immunohistochemical analysis of paraffin-embedded mouse spleen tissue slide using 84212-3-RR (CD23/Fc epsilon RI antibody) at dilution of 1:1000 (under 40x lens). Heat mediated antigen retrieval with Tris-EDTA buffer (pH 9.0). This data was developed using the same antibody clone with 84212-3-PBS in a different storage buffer formulation.



Biolayer interferometry (BLI) kinetic assays of 84212-3-RR against Mouse CD23/Fc epsilon RI were performed. The affinity constant is 0.168 nM.