

For Research Use Only

CD23/Fc epsilon RII Recombinant antibody

Catalog Number: 84212-3-RR



Basic Information

Catalog Number:	84212-3-RR	GenBank Accession Number:	EDL21948.1	Purification Method:	Protein A purification
Size:	100ul , Concentration: 1000 µg/ml by Nanodrop;	GeneID (NCBI):	14128	CloneNo.:	241385C9
Source:	Rabbit	UNIPROT ID:	P20693-1	Recommended Dilutions:	WB 1:2000-1:10000 IHC 1:500-1:2000
Isotype:	IgG	Full Name:	Fc receptor, IgE, low affinity II, alpha polypeptide		
Immunogen Catalog Number:	EG1295	Calculated MW:	38kDa		
		Observed MW:	46 kDa		

Applications

Tested Applications:	WB, IHC, ELISA	Positive Controls:	
Species Specificity:	mouse	WB :	mouse spleen tissue,
		IHC :	mouse spleen tissue,
Note-IHC: suggested antigen retrieval with TE buffer pH 9.0; (*) Alternatively, antigen retrieval may be performed with citrate buffer pH 6.0			

Background Information

CD23/Fc ε RII) is a low-affinity receptor for immunoglobulin E (IgE) and CR2/CD21, involved in B cell differentiation and IgE regulation. Two forms of Fc ε RII (Fc ε RIIa and Fc ε RIIb) were found to exist, which differ in structure only in the N-terminal cytoplasmic region, and Fc ε RIIa and Fc ε RIIb play roles in effector cells of B-cell and IgE-mediated immunity, respectively. On B cells, initiates IgE-dependent antigen uptake and presentation to T cells. On macrophages, after IgE binding and antigen cross-linking, intracellular killing of parasites is induced by activation of the L-arginine-nitric oxide pathway.

Storage

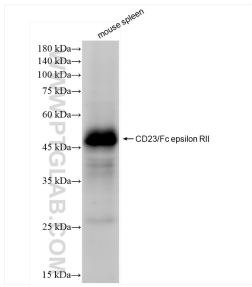
Storage:
Store at -20°C. Stable for one year after shipment.
Storage Buffer:
PBS with 0.02% sodium azide and 50% glycerol, pH7.3
Aliquoting is unnecessary for -20°C storage

*** 20ul sizes contain 0.1% BSA

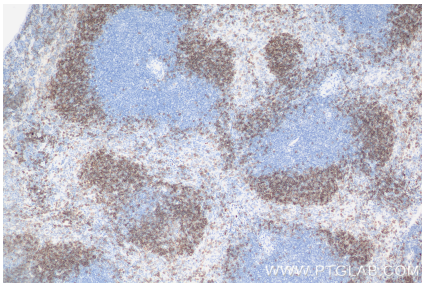
For technical support and original validation data for this product please contact:
T: 1 (888) 4PTGLAB (1-888-478-4522) (toll free in USA), or 1(312) 455-8498 (outside USA)
E: proteintech@ptglab.com
W: ptglab.com

This product is exclusively available under Proteintech Group brand and is not available to purchase from any other manufacturer.

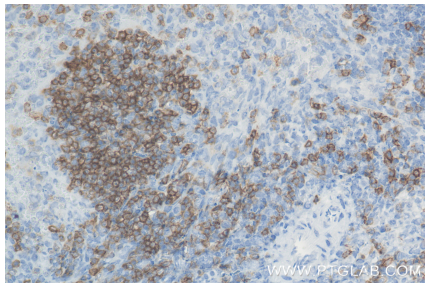
Selected Validation Data



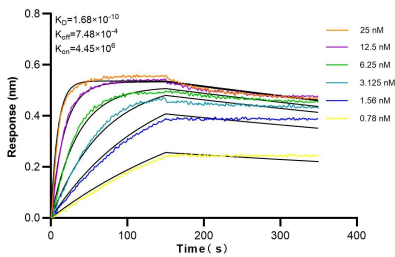
mouse spleen tissue were subjected to SDS PAGE followed by western blot with 84212-3-RR (CD23/Fc epsilon RII antibody) at dilution of 1:5000 incubated at room temperature for 1.5 hours.



Immunohistochemical analysis of paraffin-embedded mouse spleen tissue slide using 84212-3-RR (CD23/Fc epsilon RII antibody) at dilution of 1:1000 (under 10x lens). Heat mediated antigen retrieval with Tris-EDTA buffer (pH 9.0).



Immunohistochemical analysis of paraffin-embedded mouse spleen tissue slide using 84212-3-RR (CD23/Fc epsilon RII antibody) at dilution of 1:1000 (under 40x lens). Heat mediated antigen retrieval with Tris-EDTA buffer (pH 9.0).



Biolayer interferometry (BLI) kinetic assays of 84212-3-RR against Mouse CD23/Fc epsilon RII were performed. The affinity constant is 0.168 nM.