

For Research Use Only

Mouse CD23/Fc epsilon RII Recombinant antibody, PBS Only (Capture)

Catalog Number: 84212-4-PBS



Basic Information

Catalog Number: 84212-4-PBS	GenBank Accession Number: EDL21948.1	Purification Method: Protein A purification
Size: 100ug , Concentration: 1 mg/ml by Nanodrop;	GeneID (NCBI): 14128	CloneNo.: 241385A5
Source: Rabbit	UNIPROT ID: P20693-1	
Isotype: IgG	Full Name: Fc receptor, IgE, low affinity II, alpha polypeptide	
	Calculated MW: 38kDa	

Applications

Tested Applications:
Sandwich ELISA, Indirect ELISA, Sample test

Species Specificity:
mouse

Product Information

84212-4-PBS targets CD23/Fc epsilon RII as part of a matched antibody pair:

MP01134-2: 84212-4-PBS capture and 84212-3-PBS detection (validated in Sandwich ELISA)

Unconjugated rabbit recombinant monoclonal antibody in PBS only (BSA and azide free) storage buffer at a concentration of 1 mg/mL, ready for conjugation. Created using Proteintech's proprietary in-house recombinant technology. Recombinant production enables unrivalled batch-to-batch consistency, easy scale-up, and future security of supply.

This conjugation ready format makes antibodies ideal for use in many applications including: ELISAs, multiplex assays requiring matched pairs, mass cytometry, and multiplex imaging applications. Antibody use should be optimized by the end user for each application and assay.

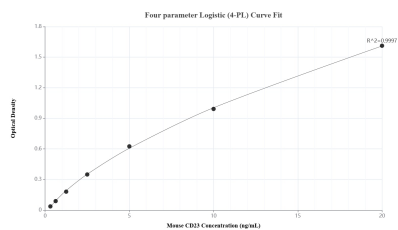
Storage

Storage:
Store at -80°C.
Storage Buffer:
PBS Only

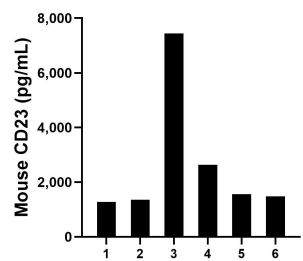
For technical support and original validation data for this product please contact:
T: 1 (888) 4PTGLAB (1-888-478-4522) (toll free in USA), or 1(312) 455-8498 (outside USA)
E: proteintech@ptglab.com
W: ptglab.com

This product is exclusively available under Proteintech Group brand and is not available to purchase from any other manufacturer.

Selected Validation Data



Sandwich ELISA standard curve of MP01134-2, Mouse CD23 Recombinant Matched Antibody Pair - PBS only. 84212-4-PBS was coated to a plate as the capture antibody and incubated with serial dilutions of standard Eg1295. 84212-3-PBS was HRP conjugated as the detection antibody. Range: 0.313-20 ng/mL.



Serum of six mouse was measured. The CD23 concentration of detected samples was determined to be 2624.00 pg/mL with a range of 1279.00 - 7445.00 pg/mL.