

CPN1 Recombinant antibody, PBS Only (Detector)

Catalog Number: 84218-1-PBS

Basic Information

Catalog Number: 84218-1-PBS	GenBank Accession Number: BC027897	Purification Method: Protein A purification
Size: 100ug , Concentration: 1 mg/ml by Nanodrop;	GeneID (NCBI): 1369	CloneNo.: 241481A5
Source: Rabbit	UNIPROT ID: P15169	
Isotype: IgG	Full Name: carboxypeptidase N, polypeptide 1	
Immunogen Catalog Number: AG4035	Calculated MW: 458 aa, 52 kDa	
	Observed MW: 40-50 kDa	

Applications

Tested Applications:
WB, IHC, IF-P, Cytometric bead array, Indirect ELISA

Species Specificity:
human, mouse, rat

Product Information

84218-1-PBS targets CPN1 as part of a matched antibody pair:

MP01152-1: 84218-2-PBS capture and 84218-1-PBS detection (validated in Cytometric bead array)

Unconjugated rabbit recombinant monoclonal antibody in PBS only (BSA and azide free) storage buffer at a concentration of 1 mg/mL, ready for conjugation. Created using Proteintech's proprietary in-house recombinant technology. Recombinant production enables unrivalled batch-to-batch consistency, easy scale-up, and future security of supply.

This conjugation ready format makes antibodies ideal for use in many applications including: ELISAs, multiplex assays requiring matched pairs, mass cytometry, and multiplex imaging applications. Antibody use should be optimized by the end user for each application and assay.

Background Information

Human carboxypeptidase N (CPN), a member of the CPN/E subfamily of "regulatory" metallo-carboxypeptidases, is an extracellular glycoprotein synthesized in the liver and secreted into the blood, where it controls the activity of vasoactive peptide hormones, growth factors and cytokines by specifically removing C-terminal basic residues. Normally, CPN circulates in blood plasma as a hetero-tetramer consisting of two 83 kDa (CPN2) domains each flanked by a 48 to 55 kDa catalytic (CPN1) domain. The C terminal region of the CPN1 subunit differs from all other family members in that it contains numerous basic residues. Proteolysis at these sites apparently happens either constitutively in the blood or during processing and secretion from the liver.

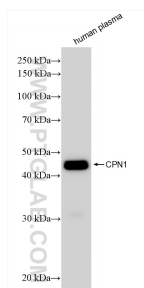
Storage

Storage:
Store at -80°C.
Storage Buffer:
PBS Only

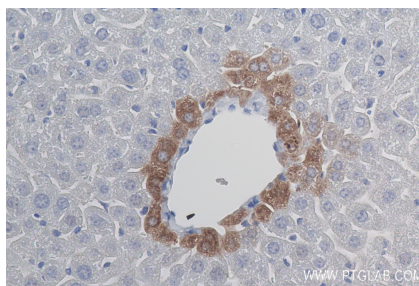
For technical support and original validation data for this product please contact:
T: 1 (888) 4PTGLAB (1-888-478-4522) (toll free in USA), or 1(312) 455-8498 (outside USA)
E: proteintech@ptglab.com
W: ptglab.com

This product is exclusively available under Proteintech Group brand and is not available to purchase from any other manufacturer.

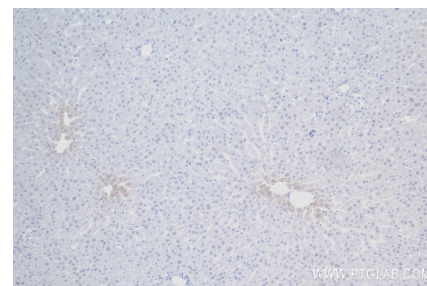
Selected Validation Data



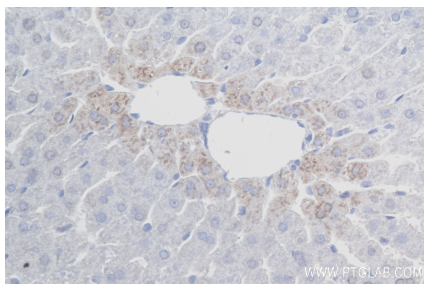
human plasma were subjected to SDS PAGE followed by western blot with 84218-1-RR (CPN1 antibody) at dilution of 1:10000 incubated at room temperature for 1.5 hours. This data was developed using the same antibody clone with 84218-1-PBS in a different storage buffer formulation.



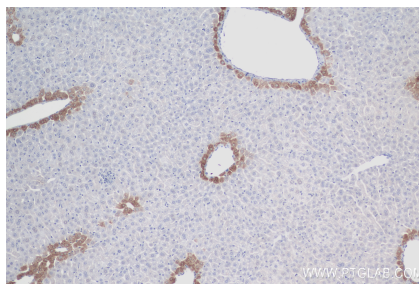
Immunohistochemical analysis of paraffin-embedded mouse liver tissue slide using 84218-1-RR (CPN1 antibody) at dilution of 1:400 (under 40x lens). Heat mediated antigen retrieval with Tris-EDTA buffer (pH 9.0). This data was developed using the same antibody clone with 84218-1-PBS in a different storage buffer formulation.



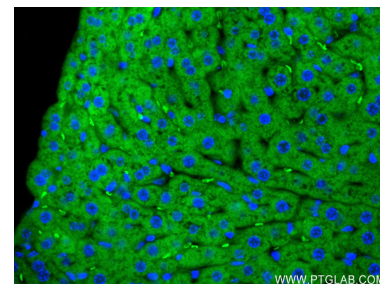
Immunohistochemical analysis of paraffin-embedded rat liver tissue slide using 84218-1-RR (CPN1 antibody) at dilution of 1:400 (under 10x lens). Heat mediated antigen retrieval with Tris-EDTA buffer (pH 9.0). This data was developed using the same antibody clone with 84218-1-PBS in a different storage buffer formulation.



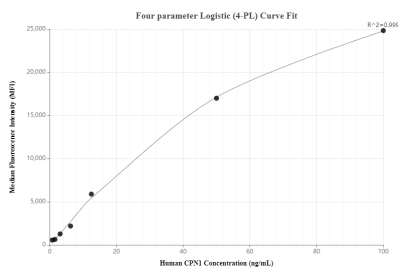
Immunohistochemical analysis of paraffin-embedded rat liver tissue slide using 84218-1-RR (CPN1 antibody) at dilution of 1:400 (under 40x lens). Heat mediated antigen retrieval with Tris-EDTA buffer (pH 9.0). This data was developed using the same antibody clone with 84218-1-PBS in a different storage buffer formulation.



Immunohistochemical analysis of paraffin-embedded mouse liver tissue slide using 84218-1-RR (CPN1 antibody) at dilution of 1:400 (under 10x lens). Heat mediated antigen retrieval with Tris-EDTA buffer (pH 9.0). This data was developed using the same antibody clone with 84218-1-PBS in a different storage buffer formulation.



Immunofluorescent analysis of (4% PFA) fixed paraffin-embedded mouse liver tissue using CPN1 antibody (84218-1-RR, Clone: 241481A5) at dilution of 1:250 and CoraLite®488-Conjugated Goat Anti-Rabbit IgG(H+L) (SA00013-2). Heat mediated antigen retrieval with Tris-EDTA buffer (pH 9.0). This data was developed using the same antibody clone with 84218-1-PBS in a different storage buffer formulation.



Cytometric bead array standard curve of MP01152-1, CPN1 Recombinant Matched Antibody Pair, PBS Only. Capture antibody: 84218-2-PBS. Detection antibody: 84218-1-PBS. Standard: Ag4035. Range: 0.781-100 ng/mL.