

For Research Use Only

NETO2 Recombinant antibody

Catalog Number: 84222-2-RR



Basic Information

Catalog Number: 84222-2-RR	GenBank Accession Number: BC012381	Purification Method: Protein A purification
Size: 100ul , Concentration: 1000 µg/ml by Nanodrop;	GeneID (NCBI): 81831	CloneNo.: 241451E10
Source: Rabbit	UNIPROT ID: Q8NC67	Recommended Dilutions: WB 1:2000-1:10000
Isotype: IgG	Full Name: neuropilin (NRP) and tolloid (TLL)-like 2	
Immunogen Catalog Number: AG2971	Calculated MW: 525 aa, 59 kDa	
	Observed MW: 59 kDa	

Applications

Tested Applications: WB, ELISA	Positive Controls: WB : rat brain tissue, mouse brain tissue
Species Specificity: human, mouse, rat	

Background Information

Neuropilin and tolloid-like 2 (NETO2), a member of the subfamily of CUB domain and LDLa-containing proteins, was identified as an auxiliary protein of neuronal kainate receptors (KARs) and played critical roles in regulating the functions of KARs. It was also able to bind to the active oligomeric form of K⁺-Cl⁻ cotransporter (KCC2) to enhance its recycling in hippocampal neurons. Recently, elevated mRNA levels of NETO2 were detected in several types of tumors.

Storage

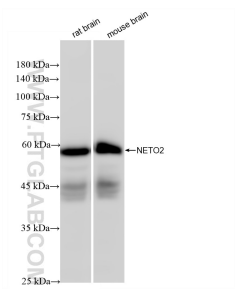
Storage:
Store at -20°C. Stable for one year after shipment.
Storage Buffer:
PBS with 0.02% sodium azide and 50% glycerol pH 7.3.
Aliquoting is unnecessary for -20°C storage

*** 20ul sizes contain 0.1% BSA

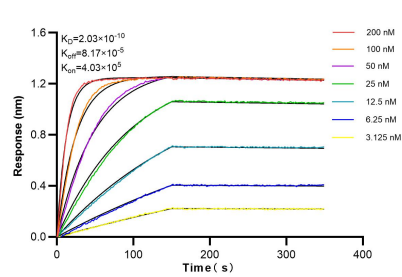
For technical support and original validation data for this product please contact:
T: 1 (888) 4PTGLAB (1-888-478-4522) (toll free in USA), or 1(312) 455-8498 (outside USA)
E: proteintech@ptglab.com
W: ptglab.com

This product is exclusively available under Proteintech Group brand and is not available to purchase from any other manufacturer.

Selected Validation Data



Various lysates were subjected to SDS PAGE followed by western blot with 84222-2-RR (NETO2 antibody) at dilution of 1:5000 incubated at room temperature for 1.5 hours.



Biolayer interferometry (BLI) kinetic assays of 84222-2-RR against Human NETO2 were performed. The affinity constant is 0.203 nM.