

For Research Use Only

ELL2 Recombinant antibody, PBS Only (Capture/Detector)

Catalog Number: 84226-1-PBS



Basic Information

Catalog Number: 84226-1-PBS	GenBank Accession Number: BC028412	Purification Method: Protein A purification
Size: 100ug , Concentration: 1 mg/ml by Nanodrop;	GeneID (NCBI): 22936	CloneNo.: 241491C7
Source: Rabbit	UNIPROT ID: O00472	
Isotype: IgG	Full Name: elongation factor, RNA polymerase II, 2	
Immunogen Catalog Number: AG3428	Calculated MW: 640 aa, 72 kDa	

Applications

Tested Applications:
Cytometric bead array, Sandwich ELISA, Indirect ELISA, Sample test

Species Specificity:
human

Product Information

84226-1-PBS targets ELL2 as part of a matched antibody pair:

MP01114-1: 84226-1-PBS capture and 84226-2-PBS detection (validated in Cytometric bead array)

MP01114-2: 84226-3-PBS capture and 84226-1-PBS detection (validated in Sandwich ELISA)

Unconjugated rabbit recombinant monoclonal antibody in PBS only (BSA and azide free) storage buffer at a concentration of 1 mg/mL, ready for conjugation. Created using Proteintech's proprietary in-house recombinant technology. Recombinant production enables unrivalled batch-to-batch consistency, easy scale-up, and future security of supply.

This conjugation ready format makes antibodies ideal for use in many applications including: ELISAs, multiplex assays requiring matched pairs, mass cytometry, and multiplex imaging applications. Antibody use should be optimized by the end user for each application and assay.

Storage

Storage:
Store at -80°C.
Storage Buffer:
PBS Only

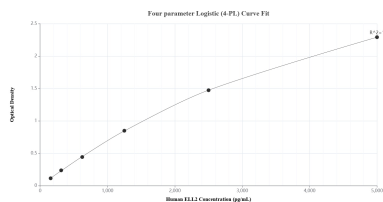
For technical support and original validation data for this product please contact:

T: 1 (888) 4PTGLAB (1-888-478-4522) (toll free in USA), or 1(312) 455-8498 (outside USA)

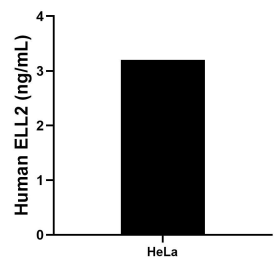
E: proteintech@ptglab.com
W: ptglab.com

This product is exclusively available under Proteintech Group brand and is not available to purchase from any other manufacturer.

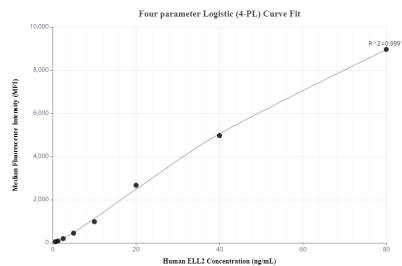
Selected Validation Data



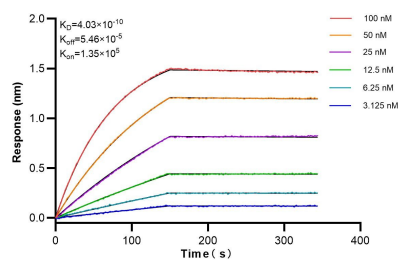
Sandwich ELISA standard curve of MP01114-2, Human ELL2 Recombinant Matched Antibody Pair - PBS only. 84226-3-PBS was coated to a plate as the capture antibody and incubated with serial dilutions of standard Ag3428. 84226-1-PBS was HRP conjugated as the detection antibody. Range: 156-5000 pg/mL.



The mean ELL2 concentration was determined to be 3.2 ng/mL in HeLa cell extract based on a 2.8 mg/mL extract load.



Cytometric bead array standard curve of MP01114-1, ELL2 Recombinant Matched Antibody Pair, PBS Only. Capture antibody: 84226-1-PBS. Detection antibody: 84226-2-PBS. Standard: Ag3428. Range: 0.625-80 ng/mL.



Bioluminescence resonance energy transfer (BLI) kinetic assays of 84226-1-RR against Human ELL2 were performed. The affinity constant is 0.403 nM.