

For Research Use Only

TADA2L Recombinant antibody

Catalog Number: 84227-2-RR



Basic Information

Catalog Number:

84227-2-RR

Size:

100ul , Concentration: 1000 µg/ml by Nanodrop;

Source:

Rabbit

Isotype:

IgG

Immunogen Catalog Number:

AG1817

GenBank Accession Number:

BC011753

GeneID (NCBI):

6871

UNIPROT ID:

O75478

Full Name:

transcriptional adaptor 2 (ADA2 homolog, yeast)-like

Calculated MW:

51 aa, 5 kDa

Observed MW:

35-50 kDa

Purification Method:

Protein A purification

CloneNo.:

241508D8

Recommended Dilutions:

WB 1:5000-1:50000

Applications

Tested Applications:

WB, ELISA

Species Specificity:

human

Positive Controls:

WB : HeLa cells, K562 cells, MCF-7 cells

Background Information

TADA2A is a subunit of the ADA2A-containing (ATAC) histone acetyltransferase complex, which with histone acetyltransferase activity on histones H3 and H4. It is required for the function of some acidic activation domains, which activate transcription from a distant site. It has a role in chromatin remodeling by binding at the linker region between neighbouring nucleosomes of dinucleosomes [PMID:19103755].

Storage

Storage:

Store at -20°C. Stable for one year after shipment.

Storage Buffer:

PBS with 0.02% sodium azide and 50% glycerol pH 7.3.

Aliquoting is unnecessary for -20°C storage

*** 20ul sizes contain 0.1% BSA

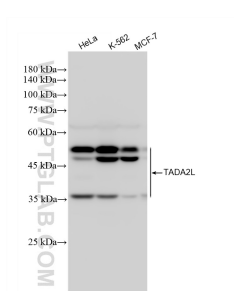
For technical support and original validation data for this product please contact:

T: 1 (888) 4PTGLAB (1-888-478-4522) (toll free in USA), or 1(312) 455-8498 (outside USA)

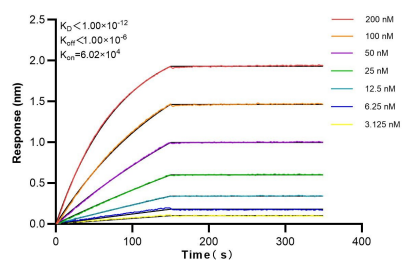
E: proteintech@ptglab.com
W: ptglab.com

This product is exclusively available under Proteintech Group brand and is not available to purchase from any other manufacturer.

Selected Validation Data



Various lysates were subjected to SDS PAGE followed by western blot with 84227-2-RR (TADA2L antibody) at dilution of 1:10000 incubated at room temperature for 1.5 hours.



Biolayer interferometry (BLI) kinetic assays of 84227-2-RR against Human TADA2L were performed. The affinity constant is below 1 pM.