

For Research Use Only

CD122/IL-2RB Recombinant antibody, PBS Only (Detector)

Catalog Number: 84229-1-PBS



Basic Information

Catalog Number: 84229-1-PBS	GenBank Accession Number: BC025691	Purification Method: Protein A purification
Size: 100ug , Concentration: 1 mg/ml by Nanodrop;	GeneID (NCBI): 3560	CloneNo.: 241408A9
Source: Rabbit	ENSEMBL Gene ID: ENSG00000100385	
Isotype: IgG	UNIPROT ID: P14784	
Immunogen Catalog Number: AG3929	Full Name: interleukin 2 receptor, beta	
	Calculated MW: 551 aa, 61 kDa	

Applications

Tested Applications:
Cytometric bead array, Sandwich ELISA, Indirect ELISA, Sample test

Species Specificity:
human

Product Information

84229-1-PBS targets CD122/IL-2RB as part of a matched antibody pair:

MP01123-2: 84229-3-PBS capture and 84229-1-PBS detection (validated in Cytometric bead array)

MP01123-3: 84229-4-PBS capture and 84229-1-PBS detection (validated in Sandwich ELISA)

Unconjugated rabbit recombinant monoclonal antibody in PBS only (BSA and azide free) storage buffer at a concentration of 1 mg/mL, ready for conjugation. Created using Proteintech's proprietary in-house recombinant technology. Recombinant production enables unrivalled batch-to-batch consistency, easy scale-up, and future security of supply.

This conjugation ready format makes antibodies ideal for use in many applications including: ELISAs, multiplex assays requiring matched pairs, mass cytometry, and multiplex imaging applications. Antibody use should be optimized by the end user for each application and assay.

Storage

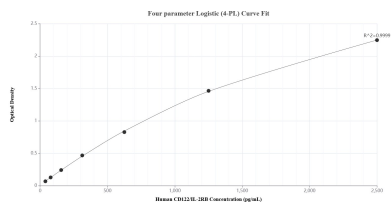
Storage:
Store at -80°C.

Storage Buffer:
PBS Only

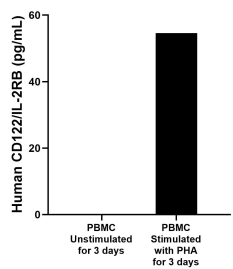
For technical support and original validation data for this product please contact:
T: 1 (888) 4PTGLAB (1-888-478-4522) (toll free in USA), or 1(312) 455-8498 (outside USA)
E: proteintech@ptglab.com
W: ptglab.com

This product is exclusively available under Proteintech Group brand and is not available to purchase from any other manufacturer.

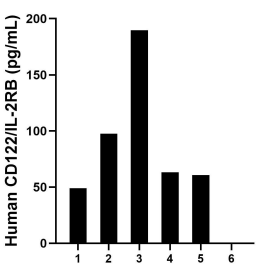
Selected Validation Data



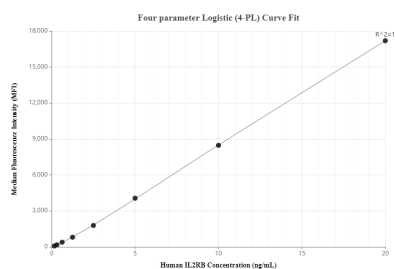
Sandwich ELISA standard curve of MP01123-3, Human CD122/IL-2RB Recombinant Matched Antibody Pair - PBS only. 84229-4-PBS was coated to a plate as the capture antibody and incubated with serial dilutions of standard Ag3929. 84229-1-PBS was HRP conjugated as the detection antibody. Range: 39.1-2500 pg/mL



Human peripheral blood mononuclear cells (PBMC) were cultured unstimulated or stimulated with 10 μ g/mL PHA for 3 days. The mean CD122/IL-2RB concentration was not determined in unstimulated PBMC supernatant, 54.6 pg/mL in PHA stimulated PBMC supernatant.



Serum of six individual healthy human donors was measured. The CD122/IL-2RB concentration of detected samples was determined to be 92.1 pg/mL with a range of 49.0-189.6 pg/mL



Cytometric bead array standard curve of MP01123-2, CD122/IL2RB Recombinant Matched Antibody Pair, PBS Only. Capture antibody: 84229-3-PBS. Detection antibody: 84229-1-PBS. Standard: Ag3929. Range: 0156-20 ng/mL