

For Research Use Only

NPEPPS Recombinant antibody, PBS Only (Capture)

Catalog Number: 84230-2-PBS



Basic Information

Catalog Number: 84230-2-PBS	GenBank Accession Number: BC065294	Purification Method: Protein A purification
Size: 100ug , Concentration: 1 mg/ml by Nanodrop;	GeneID (NCBI): 9520	CloneNo.: 241502G8
Source: Rabbit	UNIPROT ID: P55786	
Isotype: IgG	Full Name: aminopeptidase puromycin sensitive	
Immunogen Catalog Number: AG36035	Observed MW: 103 kDa	

Applications

Tested Applications:
WB, IF/ICC, Cytometric bead array, Indirect ELISA

Species Specificity:
human, mouse, rat

Product Information

84230-2-PBS targets NPEPPS as part of a matched antibody pair:

MP01126-2: 84230-2-PBS capture and 84230-3-PBS detection (validated in Cytometric bead array)

Unconjugated rabbit recombinant monoclonal antibody in PBS only (BSA and azide free) storage buffer at a concentration of 1 mg/mL, ready for conjugation. Created using Proteintech's proprietary in-house recombinant technology. Recombinant production enables unrivalled batch-to-batch consistency, easy scale-up, and future security of supply.

This conjugation ready format makes antibodies ideal for use in many applications including: ELISAs, multiplex assays requiring matched pairs, mass cytometry, and multiplex imaging applications. Antibody use should be optimized by the end user for each application and assay.

Background Information

NPEPPS, also known as PSA, is a member of the oxytocinase subfamily of the M1 aminopeptidase family. NPEPPS encodes puromycin-sensitive aminopeptidase, a zinc metallopeptidase that hydrolyzes amino acids from the N-terminus of its substrate. The protein has 2 isoforms and is located in the cytoplasm.

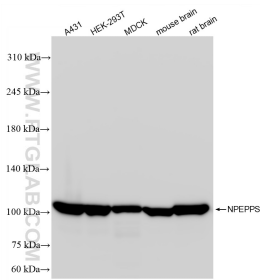
Storage

Storage:
Store at -80°C.
Storage Buffer:
PBS Only

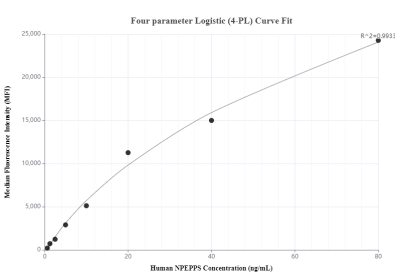
For technical support and original validation data for this product please contact:
T: 1 (888) 4PTGLAB (1-888-478-4522) (toll free in USA), or 1(312) 455-8498 (outside USA)
E: proteintech@ptglab.com
W: ptglab.com

This product is exclusively available under Proteintech Group brand and is not available to purchase from any other manufacturer.

Selected Validation Data

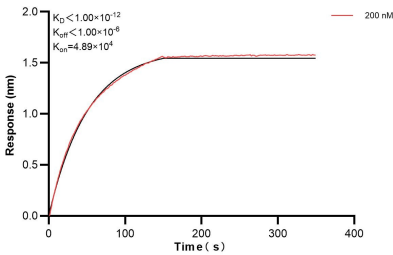


Immunofluorescent analysis of (-20°C Ethanol) fixed A549 cells using NPEPPS antibody (84230-2-RR, Clone: 241502G8) at dilution of 1:250 and CoraLite® 488-Conjugated Goat Anti-Rabbit IgG(H+L) (SA00013-2). This data was developed using the same antibody clone with 84230-2-PBS in a different storage buffer formulation.

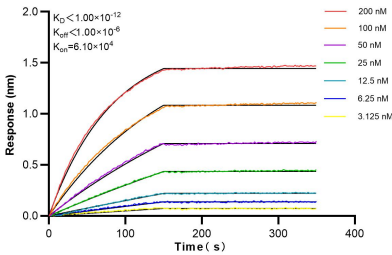


Various lysates were subjected to SDS PAGE followed by western blot with 84230-2-RR (NPEPPS antibody) at dilution of 1:10000 incubated at room temperature for 1.5 hours. This data was developed using the same antibody clone with 84230-2-PBS in a different storage buffer formulation.

Cytometric bead array standard curve of MP01126-2, NPEPPS Recombinant Matched Antibody Pair, PBS Only. Capture antibody: 84230-2-PBS. Detection antibody: 84230-3-PBS. Standard: Ag36035. Range: 0.625-80 ng/mL.



Biolayer interferometry (BLI) kinetic assay of 84230-2-PBS against Human NPEPPS was performed. The affinity constant is below 1 pM.



Biolayer interferometry (BLI) kinetic assays of 84230-2-RR against Human NPEPPS were performed. The affinity constant is below 1 pM.