

For Research Use Only

# NPEPPS Recombinant antibody, PBS Only

Catalog Number: 84230-5-PBS



## Basic Information

<b>Catalog Number:</b> 84230-5-PBS	<b>GenBank Accession Number:</b> BC065294	<b>Purification Method:</b> Protein A purification
<b>Size:</b> 100ug , Concentration: 1 mg/ml by Nanodrop;	<b>GeneID (NCBI):</b> 9520	<b>CloneNo.:</b> 241502G1
<b>Source:</b> Rabbit	<b>UNIPROT ID:</b> P55786	
<b>Isotype:</b> IgG	<b>Full Name:</b> aminopeptidase puromycin sensitive	
<b>Immunogen Catalog Number:</b> AG36035	<b>Observed MW:</b> 103 kda	

## Applications

**Tested Applications:**  
WB, IHC, IF/ICC, Indirect ELISA

**Species Specificity:**  
human, mouse, rat

## Background Information

NPEPPS, also known as PSA, is a member of the oxytocinase subfamily of the M1 aminopeptidase family. NPEPPS encodes puromycin-sensitive aminopeptidase, a zinc metallopeptidase that hydrolyzes amino acids from the N-terminus of its substrate. The protein has 2 isoforms and is located in the cytoplasm.

## Storage

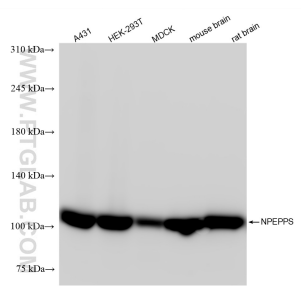
**Storage:**  
Store at -80°C.

**Storage Buffer:**  
PBS Only

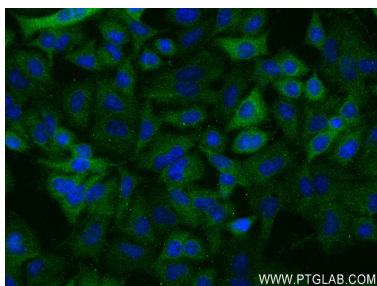
For technical support and original validation data for this product please contact:  
T: 1 (888) 4PTGLAB (1-888-478-4522) (toll free in USA), or 1(312) 455-8498 (outside USA)  
E: [proteintech@ptglab.com](mailto:proteintech@ptglab.com)  
W: [ptglab.com](http://ptglab.com)

This product is exclusively available under Proteintech Group brand and is not available to purchase from any other manufacturer.

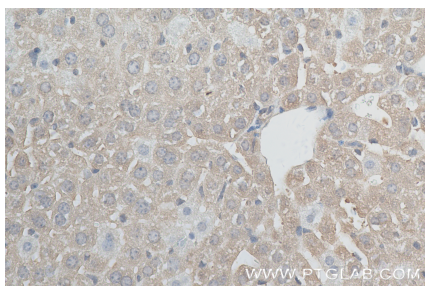
## Selected Validation Data



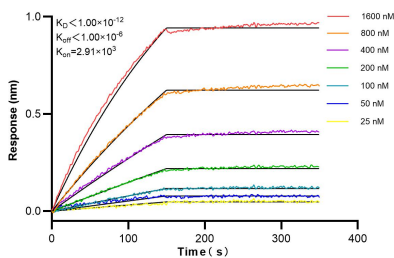
Various lysates were subjected to SDS PAGE followed by western blot with 84230-5-RR (NPEPPS antibody) at dilution of 1:10000 incubated at room temperature for 1.5 hours. This data was developed using the same antibody clone with 84230-5-PBS in a different storage buffer formulation.



Immunofluorescent analysis of (-20°C Ethanol) fixed A549 cells using NPEPPS antibody (84230-5-RR, Clone: 241502G1) at dilution of 1:250 and CoraLite®488-Conjugated Goat Anti-Rabbit IgG(H+L) (SA00013-2). This data was developed using the same antibody clone with 84230-5-PBS in a different storage buffer formulation.



Immunohistochemical analysis of paraffin-embedded mouse liver tissue slide using 84230-5-RR (NPEPPS antibody) at dilution of 1:200 (under 40x lens). Heat mediated antigen retrieval with Tris-EDTA buffer (pH 9.0). This data was developed using the same antibody clone with 84230-5-PBS in a different storage buffer formulation.



Biolayer interferometry (BLI) kinetic assays of 84230-5-RR against Human NPEPPS were performed. The affinity constant is below 1 pM.