

For Research Use Only

NPEPPS Recombinant antibody

Catalog Number: 84230-5-RR



Basic Information

Catalog Number:	GenBank Accession Number:	Purification Method:
84230-5-RR	BC065294	Protein A purification
Size:	GeneID (NCBI):	CloneNo.:
100ul , Concentration: 1000 µg/ml by Nanodrop;	9520	241502G1
Source:	UNIPROT ID:	Recommended Dilutions:
Rabbit	P55786	WB 1:5000-1:50000
Isotype:	Full Name:	IHC 1:50-1:500
IgG	aminopeptidase puromycin sensitive	IF/ICC 1:125-1:500
Immunogen Catalog Number:	Observed MW:	
AG36035	103 kda	

Applications

Tested Applications:	Positive Controls:
WB, IHC, IF/ICC, ELISA	WB : A431 cells, HEK-29T cells, MDCK cells, mouse brain tissue, rat brain tissue
Species Specificity:	IHC : mouse liver tissue,
human, mouse, rat	IF/ICC : A549 cells,
Note-IHC: suggested antigen retrieval with TE buffer pH 9.0; (*) Alternatively, antigen retrieval may be performed with citrate buffer pH 6.0	

Background Information

NPEPPS, also known as PSA, is a member of the oxytocinase subfamily of the M1 aminopeptidase family. NPEPPS encodes puromycin-sensitive aminopeptidase, a zinc metallopeptidase that hydrolyzes amino acids from the N-terminus of its substrate. The protein has 2 isoforms and is located in the cytoplasm.

Storage

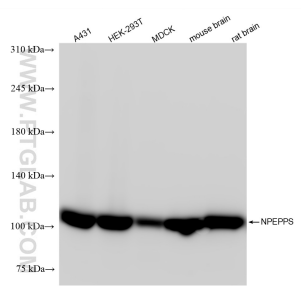
Storage:
Store at -20°C. Stable for one year after shipment.
Storage Buffer:
PBS with 0.02% sodium azide and 50% glycerol pH 7.3.
Aliquoting is unnecessary for -20°C storage

*** 20ul sizes contain 0.1% BSA

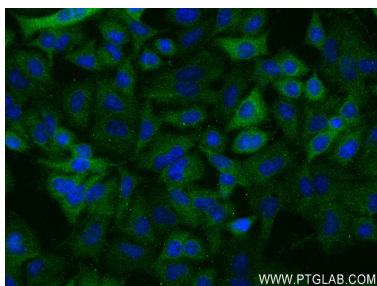
For technical support and original validation data for this product please contact:
T: 1 (888) 4PTGLAB (1-888-478-4522) (toll free in USA), or 1(312) 455-8498 (outside USA)
E: proteintech@ptglab.com
W: ptglab.com

This product is exclusively available under Proteintech Group brand and is not available to purchase from any other manufacturer.

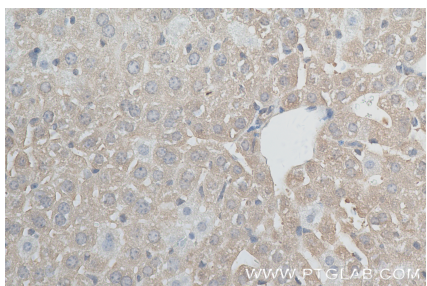
Selected Validation Data



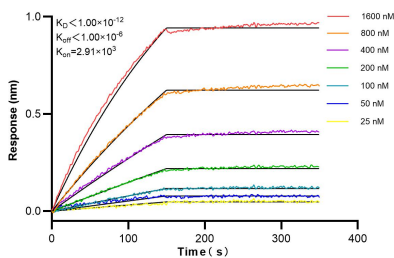
Various lysates were subjected to SDS PAGE followed by western blot with 84230-5-RR (NPEPPS antibody) at dilution of 1:10000 incubated at room temperature for 1.5 hours.



Immunofluorescent analysis of (-20°C Ethanol) fixed A549 cells using NPEPPS antibody (84230-5-RR, Clone: 241502G1) at dilution of 1:250 and CoraLite®488-Conjugated Goat Anti-Rabbit IgG(H+L) (SA00013-2).



Immunohistochemical analysis of paraffin-embedded mouse liver tissue slide using 84230-5-RR (NPEPPS antibody) at dilution of 1:200 (under 40x lens). Heat mediated antigen retrieval with Tris-EDTA buffer (pH 9.0).



Biolayer interferometry (BLI) kinetic assays of 84230-5-RR against Human NPEPPS were performed. The affinity constant is below 1 pM.