

For Research Use Only

# ENTPD1 Recombinant antibody

Catalog Number: 84235-4-RR



## Basic Information

Catalog Number:

84235-4-RR

Size:

100ul , Concentration: 1000 ug/ml by

Nanodrop;

Source:

Rabbit

Isotype:

IgG

GenBank Accession Number:

BC047664

GeneID (NCBI):

953

UNIPROT ID:

P49961

Full Name:

ectonucleoside triphosphate

diphosphohydrolase 1

Calculated MW:

58 kDa

Observed MW:

75 kDa

Purification Method:

Protein A purification

CloneNo.:

241292A1

Recommended Dilutions:

WB 1:5000-1:50000

## Applications

Tested Applications:

WB, ELISA

Species Specificity:

human

Positive Controls:

WB : human placenta tissue,

## Background Information

ENTPD1(Ectonucleoside triphosphate diphosphohydrolase 1) is also named CD39, NTPDase 1, and Ecto-ATPDase 1 and belongs to the GDA1/CD39 NTPase family. In the nervous system, it can hydrolyze ATP and other nucleotides to regulate purinergic neurotransmission. It is a noncovalent tetrameric protein and detergent inhibition of enzymatic activity is caused by dissociation of ectoapyrase tetramers into monomers(PMID: 9733785 ). And it is a 70- to 100-kDa protein that is heavily N-glycosylated(PMID:7930580). This protein has 6 glycosylation sites and 3 isoforms(58 kDa, 59 kDa, and 34 kDa) produced by alternative splicing.

## Storage

Storage:

Store at -20°C. Stable for one year after shipment.

Storage Buffer:

PBS with 0.02% sodium azide and 50% glycerol pH 7.3.

Aliquoting is unnecessary for -20°C storage

\*\*\* 20ul sizes contain 0.1% BSA

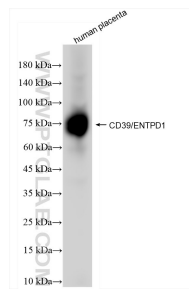
For technical support and original validation data for this product please contact:

T: 1 (888) 4PTGLAB (1-888-478-4522) (toll free  
in USA), or 1(312) 455-8498 (outside USA)

E: [proteintech@ptglab.com](mailto:proteintech@ptglab.com)  
W: [ptglab.com](http://ptglab.com)

This product is exclusively available under Proteintech Group brand and is not available to purchase from any other manufacturer.

## Selected Validation Data



human placenta tissue were subjected to SDS PAGE followed by western blot with 84235-4-RR (ENTPD1 antibody) at dilution of 1:10000 incubated at room temperature for 1.5 hours.