

For Research Use Only

# OX40/TNFRSF4 Recombinant antibody, PBS Only (Capture)

Catalog Number: 84247-2-PBS



## Basic Information

**Catalog Number:**

84247-2-PBS

**Size:**

100ug, Concentration: 1 mg/ml by  
Nanodrop;

**Source:**

Rabbit

**Isotype:**

IgG

**GenBank Accession Number:**

NM\_003327

**GeneID (NCBI):**

7293

**UNIPROT ID:**

P43489

**Full Name:**

tumor necrosis factor receptor  
superfamily, member 4

**Calculated MW:**

29 kDa

**Purification Method:**

Protein A purification

**CloneNo.:**

241398D11

## Applications

**Tested Applications:**

Cytometric bead array, Sandwich ELISA, Indirect ELISA,  
Sample test

**Species Specificity:**

human

## Product Information

84247-2-PBS targets OX40/TNFRSF4 as part of a matched antibody pair:

MP01138-1: 84247-2-PBS capture and 84247-3-PBS detection (validated in Cytometric bead array)

MP01138-2: 84247-2-PBS capture and 84247-1-PBS detection (validated in Cytometric bead array, Sandwich ELISA)

Unconjugated rabbit recombinant monoclonal antibody in PBS only (BSA and azide free) storage buffer at a concentration of 1 mg/mL, ready for conjugation. Created using Proteintech's proprietary in-house recombinant technology. Recombinant production enables unrivalled batch-to-batch consistency, easy scale-up, and future security of supply.

This conjugation ready format makes antibodies ideal for use in many applications including: ELISAs, multiplex assays requiring matched pairs, mass cytometry, and multiplex imaging applications. Antibody use should be optimized by the end user for each application and assay.

## Storage

**Storage:**

Store at -80°C.

**Storage Buffer:**

PBS Only

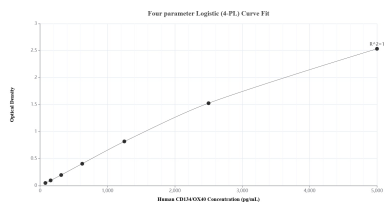
For technical support and original validation data for this product please contact:

T: 1 (888) 4PTGLAB (1-888-478-4522) (toll free  
in USA), or 1(312) 455-8498 (outside USA)

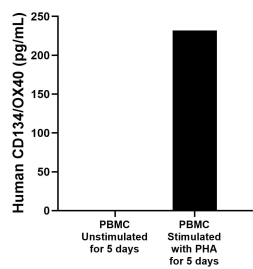
E: [proteintech@ptglab.com](mailto:proteintech@ptglab.com)  
W: [ptglab.com](http://ptglab.com)

This product is exclusively available under Proteintech Group brand and is not available to purchase from any other manufacturer.

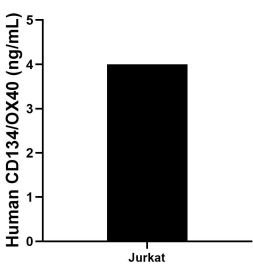
Selected Validation Data



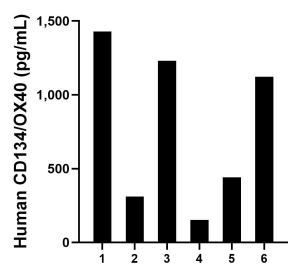
Sandwich ELISA standard curve of MP01138-2, Human CD134/OX40 Recombinant Matched Antibody Pair - PBS only. 84247-2-PBS was coated to a plate as the capture antibody and incubated with serial dilutions of standard Eg1261. 84247-1-PBS was HRP conjugated as the detection antibody. Range: 78.1-5000 pg/mL



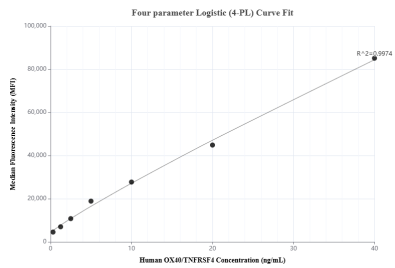
Human peripheral blood mononuclear cells (PBMC) were cultured unstimulated or stimulated with 10 µg/mL PHA for 5 days. The mean CD134/OX40 concentration was not determined in unstimulated PBMC supernatant, 232.1 pg/mL in PHA stimulated PBMC supernatant.



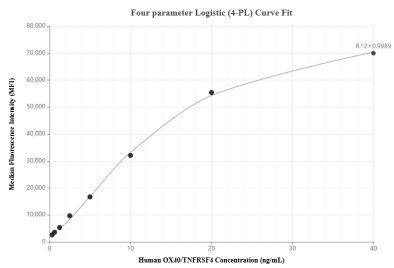
The mean CD134/OX40 concentration was determined to be 4.0 ng/mL in Jurkat cell extract based on a 1.5 mg/mL extract load.



Serum of six individual healthy human donors was measured. The CD134/OX40 concentration of detected samples was determined to be 780.8 pg/mL with a range of 152.2-1,428.1 pg/mL



Cytometric bead array standard curve of MP01138-1, CD134/OX40 Recombinant Matched Antibody Pair, PBS Only. Capture antibody: 84247-2-PBS. Detection antibody: 84247-3-PBS. Standard: Eg1261. Range: 0.313-40 ng/mL



Cytometric bead array standard curve of MP01138-2, CD134/OX40 Recombinant Matched Antibody Pair, PBS Only. Capture antibody: 84247-2-PBS. Detection antibody: 84247-1-PBS. Standard: Eg1261. Range: 0.313-40 ng/mL