

For Research Use Only

MAGEA4 Recombinant antibody, PBS Only (Capture)

Catalog Number: 84248-3-PBS



Basic Information

Catalog Number: 84248-3-PBS	GenBank Accession Number: BC017723	Purification Method: Protein A purification
Size: 100ug , Concentration: 1 mg/ml by Nanodrop;	GeneID (NCBI): 4103	CloneNo.: 241558F8
Source: Rabbit	UNIPROT ID: P43358	
Isotype: IgG	Full Name: melanoma antigen family A, 4	
Immunogen Catalog Number: AG3193	Calculated MW: 317 aa, 35 kDa	

Applications

Tested Applications:
Cytometric bead array, Sandwich ELISA, Indirect ELISA, Sample test

Species Specificity:
human

Product Information

84248-3-PBS targets MAGEA4 as part of a matched antibody pair:

MP01144-3: 84248-3-PBS capture and 84248-1-PBS detection (validated in Cytometric bead array, Sandwich ELISA)

Unconjugated rabbit recombinant monoclonal antibody in PBS only (BSA and azide free) storage buffer at a concentration of 1 mg/mL, ready for conjugation. Created using Proteintech's proprietary in-house recombinant technology. Recombinant production enables unrivalled batch-to-batch consistency, easy scale-up, and future security of supply.

This conjugation ready format makes antibodies ideal for use in many applications including: ELISAs, multiplex assays requiring matched pairs, mass cytometry, and multiplex imaging applications. Antibody use should be optimized by the end user for each application and assay.

Storage

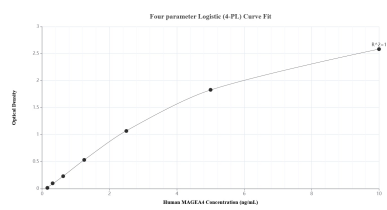
Storage:
Store at -80°C.

Storage Buffer:
PBS only

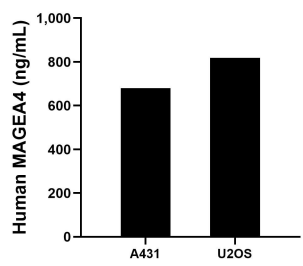
For technical support and original validation data for this product please contact:
T: 1 (888) 4PTGLAB (1-888-478-4522) (toll free in USA), or 1(312) 455-8498 (outside USA)
E: proteintech@ptglab.com
W: ptglab.com

This product is exclusively available under Proteintech Group brand and is not available to purchase from any other manufacturer.

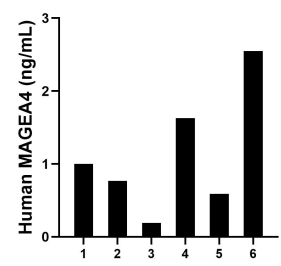
Selected Validation Data



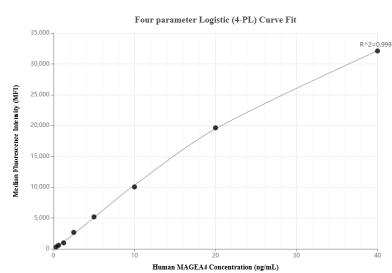
Sandwich ELISA standard curve of MP01144-3, Human MAGEA4 Recombinant Matched Antibody Pair - PBS only. 84248-3-PBS was coated to a plate as the capture antibody and incubated with serial dilutions of standard Ag3193. 84248-1-PBS was HRP conjugated as the detection antibody. Range: 0.156-10 ng/mL



The mean MAGEA4 concentration was determined to be 680.30 ng/mL in A431 cell extract based on a 2.60 mg/mL extract load and 818.54 ng/mL in U2OS cell extract based on a 3.50 mg/mL extract load.



Serum of six individual healthy human donors was measured. The MAGEA4 concentration of detected samples was determined to be 1.12 ng/mL with a range of 0.19-2.55 ng/mL



Cytometric bead array standard curve of MP01144-3, MAGEA4 Recombinant Matched Antibody Pair, PBS Only. Capture antibody: 84248-3-PBS. Detection antibody: 84248-1-PBS. Standard: Ag3193. Range: 0.313-40 ng/mL