

For Research Use Only

MAGEA4 Recombinant antibody

Catalog Number: 84248-6-RR



Basic Information

Catalog Number: 84248-6-RR	GenBank Accession Number: BC017723	Purification Method: Protein A purification
Size: 100ul , Concentration: 1000 ug/ml by Nanodrop;	GeneID (NCBI): 4103	CloneNo.: 241558B10
Source: Rabbit	UNIPROT ID: P43358	Recommended Dilutions: WB 1:5000-1:50000
Isotype: IgG	Full Name: melanoma antigen family A, 4	
Immunogen Catalog Number: AG3193	Calculated MW: 317 aa, 35 kDa	
	Observed MW: 45 kDa	

Applications

Tested Applications: WB, FC (Intra), ELISA	Positive Controls: WB : A431 cells, human testis tissue, U2OS cells, A375 cells
Species Specificity: human	

Background Information

MAGEA4 is a member of the MAGEA family, which belongs to chromosome X-clustered cancer/testis antigens. MAGEA4 is expressed in various human cancers but not in normal tissues besides the testis. High expression of MAGE-A4 in tumors was correlated with poor prognosis in many tumor types.

Storage

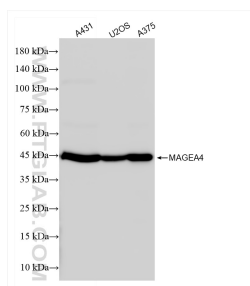
Storage:
Store at -20°C. Stable for one year after shipment.
Storage Buffer:
PBS with 0.02% sodium azide and 50% glycerol pH 7.3.
Aliquoting is unnecessary for -20°C storage

*** 20ul sizes contain 0.1% BSA

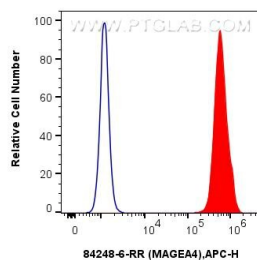
For technical support and original validation data for this product please contact:
T: 1 (888) 4PTGLAB (1-888-478-4522) (toll free in USA), or 1(312) 455-8498 (outside USA)
E: proteintech@ptglab.com
W: ptglab.com

This product is exclusively available under Proteintech Group brand and is not available to purchase from any other manufacturer.

Selected Validation Data



Various lysates were subjected to SDS PAGE followed by western blot with 84248-6-RR (MAGEA4 antibody) at dilution of 1:10000 incubated at room temperature for 1.5 hours.



1x10⁶ A431 cells were intracellularly stained with 0.25 ug MAGEA4 Recombinant antibody (84248-6-RR, Clone:241558B10) and APC-Conjugated Goat Anti-Rabbit IgG(H+L)(red), or 0.25 ug Isotype Control (blue). Cells were fixed and permeabilized with True-Nuclear Transcription Factor Buffer Set.