

For Research Use Only

# SLAMF7/CD319 Recombinant antibody, PBS Only (Capture)

Catalog Number: 84254-1-PBS



## Basic Information

|   |  |   |
|---|--|---|
| <b>Catalog Number:</b><br>84254-1-PBS                         | <b>GenBank Accession Number:</b><br>BC027867 | <b>Purification Method:</b><br>Protein A purification |
| <b>Size:</b><br>100ug, Concentration: 1 mg/ml by<br>Nanodrop; | <b>GeneID (NCBI):</b><br>57823               | <b>CloneNo.:</b><br>241320B6                          |
| <b>Source:</b><br>Rabbit                                      | <b>UNIPROT ID:</b><br>Q9NQ25                 |   |
| <b>Isotype:</b><br>IgG  | <b>Full Name:</b><br>SLAM family member 7    |   |
|   | <b>Calculated MW:</b><br>335 aa, 37 kDa      |   |
|   | <b>Observed MW:</b><br>75 kDa                |   |

## Applications

**Tested Applications:**  
WB, IHC, Cytometric bead array, Indirect ELISA

**Species Specificity:**  
human

## Product Information

84254-1-PBS targets SLAMF7/CD319 as part of a matched antibody pair:

MP01157-2: 84254-1-PBS capture and 84254-3-PBS detection (validated in Cytometric bead array)

Unconjugated rabbit recombinant monoclonal antibody in PBS only (BSA and azide free) storage buffer at a concentration of 1 mg/mL, ready for conjugation. Created using Proteintech's proprietary in-house recombinant technology. Recombinant production enables unrivalled batch-to-batch consistency, easy scale-up, and future security of supply.

This conjugation ready format makes antibodies ideal for use in many applications including: ELISAs, multiplex assays requiring matched pairs, mass cytometry, and multiplex imaging applications. Antibody use should be optimized by the end user for each application and assay.

## Background Information

Signaling lymphocyte activation molecule (SLAM) family receptors is a group of type I transmembrane receptors belonging to the immunoglobulin superfamily (PMID: 37251372). The SLAM family contains nine members that contain an extracellular segment comprising two or four Ig-like domains (V-like variable and C2-like constant), a transmembrane region and a cytoplasmic tail (PMID: 29662641). They are involved in various physiological and pathological processes, including the regulation of immunological responses and the route of viral entry. SLAMF7, also known as CS1, CRACC or CD319, is expressed on NK cells, CD8+ T lymphocytes, B lymphocytes, and mature dendritic cells (PMID: 28861320). It exerts both activating and inhibitory effects depending on the expression status of SAP or EAT-2. SLAMF7 is overexpressed in multiple myeloma and makes it a target for immunotherapy (PMID: 28861320). The native molecular weight of SLAMF7 is 37 kDa and the apparent molecular mass shifts due to glycosylation (PMID: 11698418; 36381324).

## Storage

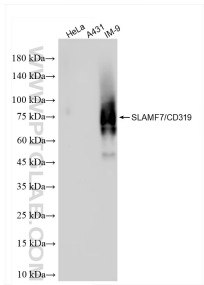
**Storage:**  
Store at -80°C.

**Storage Buffer:**  
PBS Only

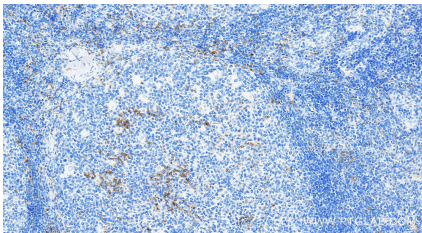
For technical support and original validation data for this product please contact:  
T: 1 (888) 4PTGLAB (1-888-478-4522) (toll free in USA), or 1(312) 455-8498 (outside USA)  
E: [proteintech@ptglab.com](mailto:proteintech@ptglab.com)  
W: [ptglab.com](http://ptglab.com)

This product is exclusively available under Proteintech Group brand and is not available to purchase from any other manufacturer.

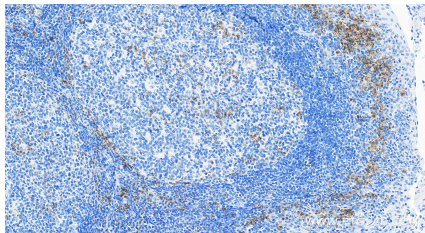
Selected Validation Data



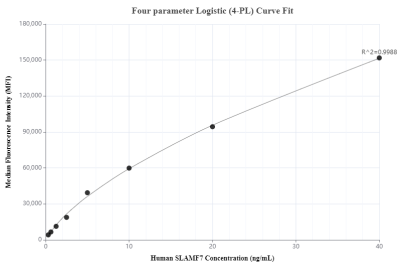
IM-9 cells were subjected to SDS PAGE followed by western blot with 84254-1-RR (SLAMF7 antibody) at dilution of 1:4000 incubated at room temperature for 1.5 hours. This data was developed using the same antibody clone with 84254-1-PBS in a different storage buffer formulation.



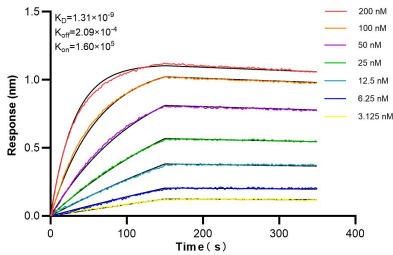
Immunohistochemical analysis of paraffin-embedded human tonsillitis tissue slide using 84254-1-RR (SLAMF7/CD319 antibody) at dilution of 1:1000 (under 40x lens). Heat mediated antigen retrieval with Tris-EDTA buffer (pH 9.0). This data was developed using the same antibody clone with 84254-1-PBS in a different storage buffer formulation.



Immunohistochemical analysis of paraffin-embedded human tonsillitis tissue slide using 84254-1-RR (SLAMF7/CD319 antibody) at dilution of 1:1000 (under 40x lens). Heat mediated antigen retrieval with Tris-EDTA buffer (pH 9.0). This data was developed using the same antibody clone with 84254-1-PBS in a different storage buffer formulation.



Cytometric bead array standard curve of MP01157-2, SLAMF7 Recombinant Matched Antibody Pair, PBS Only. Capture antibody: 84254-1-PBS. Detection antibody: 84254-3-PBS. Standard: RP02327. Range: 0.313-40 ng/mL.



Biolayer interferometry (BLI) kinetic assays of 84254-1-RR against Human SLAMF7/CD319 were performed. The affinity constant is 1.31 nM.