

For Research Use Only

METTL2 Recombinant antibody, PBS Only (Capture)

Catalog Number: 84257-1-PBS



Basic Information

Catalog Number: 84257-1-PBS	GenBank Accession Number: BC107586	Purification Method: Protein A purification
Size: 100ug, Concentration: 1 mg/ml by Nanodrop;	GeneID (NCBI): 55798	CloneNo.: 241490A3
Source: Rabbit	UNIPROT ID: Q6P1Q9	
Isotype: IgG	Full Name: methyltransferase like 2B	
Immunogen Catalog Number: AG10410	Calculated MW: 313 aa, 36 kDa	
	Observed MW: 36-43 kDa	

Applications

Tested Applications:
WB, IF/ICC, Cytometric bead array, Indirect ELISA

Species Specificity:
human

Product Information

84257-1-PBS targets METTL2 as part of a matched antibody pair:

MP01163-3: 84257-1-PBS capture and 84257-3-PBS detection (validated in Cytometric bead array)

Unconjugated rabbit recombinant monoclonal antibody in PBS only (BSA and azide free) storage buffer at a concentration of 1 mg/mL, ready for conjugation. Created using Proteintech's proprietary in-house recombinant technology. Recombinant production enables unrivalled batch-to-batch consistency, easy scale-up, and future security of supply.

This conjugation ready format makes antibodies ideal for use in many applications including: ELISAs, multiplex assays requiring matched pairs, mass cytometry, and multiplex imaging applications. Antibody use should be optimized by the end user for each application and assay.

Background Information

METTL2A and METTL2B are required for the threonyl and arginyl tRNA methylation. METTL2 methyltransferase is responsible for 3-methylcytosine modification of arginine tRNAs in mammals. METTL2A and METTL2B are in higher homology 99%. This antibody detects both METTL2A and METTL2B.

Storage

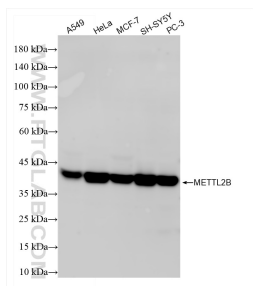
Storage:
Store at -80°C.

Storage Buffer:
PBS Only

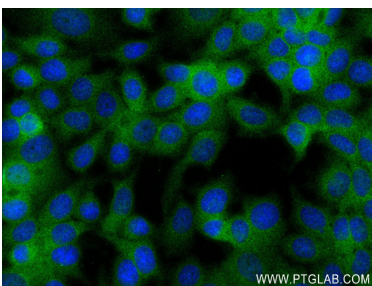
For technical support and original validation data for this product please contact:
T: 1 (888) 4PTGLAB (1-888-478-4522) (toll free in USA), or 1(312) 455-8498 (outside USA)
E: proteintech@ptglab.com
W: ptglab.com

This product is exclusively available under Proteintech Group brand and is not available to purchase from any other manufacturer.

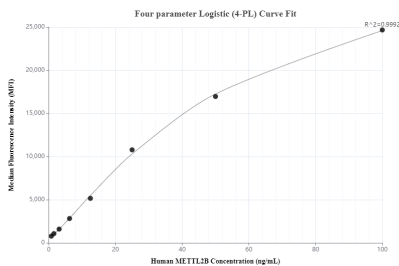
Selected Validation Data



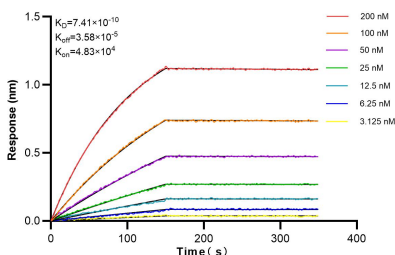
Various lysates were subjected to SDS PAGE followed by western blot with 84257-1-RR (METTL2 antibody) at dilution of 1:5000 incubated at room temperature for 1.5 hours. This data was developed using the same antibody clone with 84257-1-PBS in a different storage buffer formulation.



Immunofluorescent analysis of (4% PFA) fixed MCF-7 cells using METTL2 antibody (84257-1-RR, Clone: 241490A3) at dilution of 1:250 and CoraLite®488-Conjugated Goat Anti-Rabbit IgG(H+L) (SA00013-2). This data was developed using the same antibody clone with 84257-1-PBS in a different storage buffer formulation.



Cytometric bead array standard curve of MP01163-3, METTL2B Recombinant Matched Antibody Pair, PBS Only. Capture antibody: 84257-1-PBS. Detection antibody: 84257-3-PBS. Standard: Ag10410. Range: 0.781-100 ng/mL.



Bioluminescence resonance energy transfer (BRET) kinetic assays of 84257-1-RR against Human METTL2 were performed. The affinity constant is 0.741 nM.