

For Research Use Only

# METTL2 Recombinant antibody

Catalog Number: 84257-1-RR



## Basic Information

### Catalog Number:

84257-1-RR

### Size:

100ul, Concentration: 1000 µg/ml by Nanodrop;

### Source:

Rabbit

### Isotype:

IgG

### Immunogen Catalog Number:

AG10410

### GenBank Accession Number:

BC107586

### GeneID (NCBI):

55798

### UNIPROT ID:

Q6P1Q9

### Full Name:

methyltransferase like 2B

### Calculated MW:

313 aa, 36 kDa

### Observed MW:

36~43 kDa

### Purification Method:

Protein A purification

### CloneNo.:

241490A3

### Recommended Dilutions:

WB 1:2000-1:10000

IF/ICC 1:125-1:500

## Applications

### Tested Applications:

WB, IF/ICC, ELISA

### Species Specificity:

human

### Positive Controls:

WB : A549 cells, HeLa cells, MCF-7 cells, SH-SY5Y cells, PC-3 cells

IF/ICC : MCF-7 cells,

## Background Information

METTL2A and METTL2B are required for the threonyl and arginyl tRNA methylation. METTL2 methyltransferase is responsible for 3-methylcytosine modification of arginine tRNAs in mammals. METTL2A and METTL2B are in higher homology 99%. This antibody detects both METTL2A and METTL2B.

## Storage

### Storage:

Store at -20°C. Stable for one year after shipment.

### Storage Buffer:

PBS with 0.02% sodium azide and 50% glycerol pH 7.3.

Aliquoting is unnecessary for -20°C storage

\*\*\* 20ul sizes contain 0.1% BSA

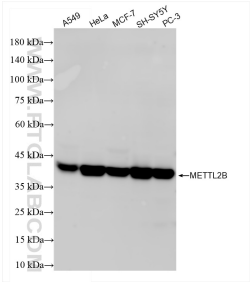
For technical support and original validation data for this product please contact:

T: 1 (888) 4PTGLAB (1-888-478-4522) (toll free in USA), or 1(312) 455-8498 (outside USA)

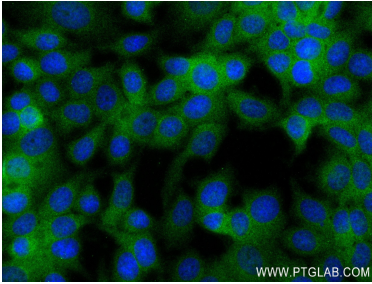
E: [proteintech@ptglab.com](mailto:proteintech@ptglab.com)  
W: [ptglab.com](http://ptglab.com)

This product is exclusively available under Proteintech Group brand and is not available to purchase from any other manufacturer.

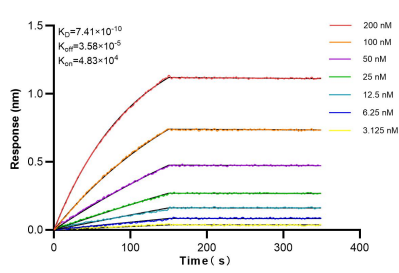
Selected Validation Data



Various lysates were subjected to SDS PAGE followed by western blot with 84257-1-RR (METTL2 antibody) at dilution of 1:5000 incubated at room temperature for 1.5 hours.



Immunofluorescent analysis of (4% PFA) fixed MCF-7 cells using METTL2 antibody (84257-1-RR, Clone: 241490A3 ) at dilution of 1:250 and CoraLite®488-Conjugated Goat Anti-Rabbit IgG(H+L) (SA00013-2).



Biolayer interferometry (BLI) kinetic assays of 84257-1-RR against Human METTL2 were performed. The affinity constant is 0.741 nM.