

For Research Use Only

PKC Delta Recombinant antibody, PBS Only

Catalog Number: 84261-5-PBS



Basic Information

Catalog Number: 84261-5-PBS	GenBank Accession Number: BC043350	Purification Method: Protein A purification
Size: 100ug , Concentration: 1 mg/ml by Nanodrop;	GeneID (NCBI): 5580	CloneNo.: 241608A2
Source: Rabbit	UNIPROT ID: Q05655	
Isotype: IgG	Full Name: protein kinase C, delta	
Immunogen Catalog Number: AG5473	Calculated MW: 78 kDa	
	Observed MW: 70-80 kDa	

Applications

Tested Applications:
WB, IF/ICC, FC (Intra), Indirect ELISA

Species Specificity:
human, mouse, rat

Background Information

PKC Delta is a member of the protein kinase C family of serine- and threonine-specific protein kinases. The encoded protein is activated by diacylglycerol and is both a tumor suppressor and a positive regulator of cell cycle progression. Also, this protein can positively or negatively regulate apoptosis. Defects in this gene are a cause of autoimmune lymphoproliferative syndrom.

Storage

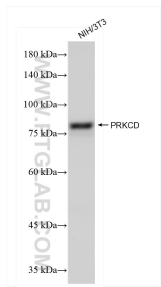
Storage:
Store at -80°C.

Storage Buffer:
PBS Only

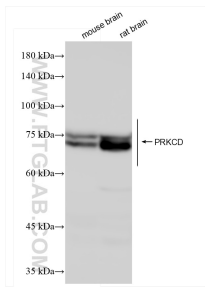
For technical support and original validation data for this product please contact:
T: 1 (888) 4PTGLAB (1-888-478-4522) (toll free in USA), or 1(312) 455-8498 (outside USA)
E: proteintech@ptglab.com
W: ptglab.com

This product is exclusively available under Proteintech Group brand and is not available to purchase from any other manufacturer.

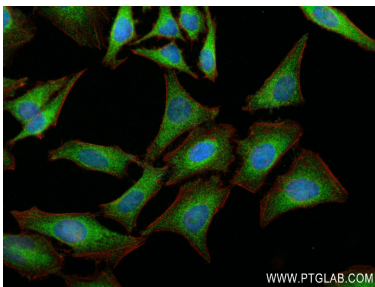
Selected Validation Data



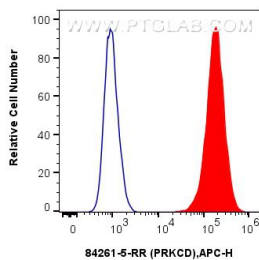
NIH/3T3 cells were subjected to SDS PAGE followed by western blot with 84261-5-RR (PKC Delta antibody) at dilution of 1:2000 incubated at room temperature for 1.5 hours. This data was developed using the same antibody clone with 84261-5-PBS in a different storage buffer formulation.



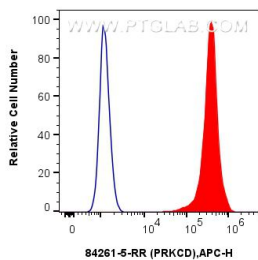
Various lysates were subjected to SDS PAGE followed by western blot with 84261-5-RR (PKC Delta antibody) at dilution of 1:2000 incubated at room temperature for 1.5 hours. This data was developed using the same antibody clone with 84261-5-PBS in a different storage buffer formulation.



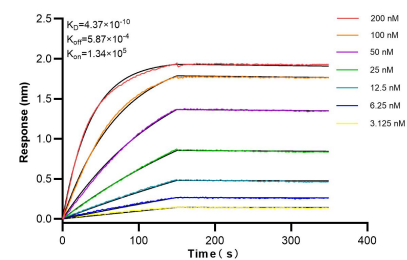
Immunofluorescent analysis of (4% PFA) fixed HeLa cells using PRKCD antibody (84261-5-RR, Clone: 241608A2) at dilution of 1:500 and CoraLite®488-Conjugated Goat Anti-Rabbit IgG(H+L) (SA00013-2), CL594-Phalloidin (red). This data was developed using the same antibody clone with 84261-5-PBS in a different storage buffer formulation.



1x10⁶ HT-1080 cells were intracellularly stained with 0.25 ug PRKCD Recombinant Antibody (84261-5-RR, Clone:241608A2) and APC-Conjugated Goat Anti-Rabbit IgG(H+L) (red), or 0.25 ug Rabbit IgG Isotype Control Recombinant Antibody (98136-1-RR, Clone: 240953C9) (blue). Cells were fixed with 4% PFA and permeabilized with Flow Cytometry Perm Buffer (PF00011-C). This data was developed using the same antibody clone with 84261-5-PBS in a different storage buffer



1x10⁶ HeLa cells were intracellularly stained with 0.25 ug PRKCD Recombinant Antibody (84261-5-RR, Clone:241608A2) and APC-Conjugated Goat Anti-Rabbit IgG(H+L)(red), or 0.25 ug Rabbit IgG Isotype Control Recombinant Antibody (98136-1-RR, Clone: 240953C9) (blue). Cells were fixed with 4% PFA and permeabilized with Flow Cytometry Perm Buffer (PF00011-C). This data was developed using the same antibody clone with 84261-5-PBS in a different storage buffer



Biolayer interferometry (BLI) kinetic assays of 84261-5-RR against Human PKC Delta were performed. The affinity constant is 0.437 nM.