

For Research Use Only

BTLA Recombinant antibody, PBS Only (Detector)

Catalog Number: 84262-6-PBS



Basic Information

Catalog Number: 84262-6-PBS	GenBank Accession Number: BC107091	Purification Method: Protein A purification
Size: 100ug , Concentration: 1 mg/ml by Nanodrop;	GeneID (NCBI): 151888	CloneNo.: 241319C11
Source: Rabbit	UNIPROT ID: Q7Z6A9	
Isotype: IgG	Full Name: B and T lymphocyte associated	
	Calculated MW: 289 aa, 33 kDa	

Applications

Tested Applications:
Sandwich ELISA, Indirect ELISA, Sample test

Species Specificity:
human

Product Information

84262-6-PBS targets BTLA as part of a matched antibody pair:

MP01168-4: 84262-5-PBS capture and 84262-6-PBS detection (validated in Sandwich ELISA)

Unconjugated rabbit recombinant monoclonal antibody in PBS only (BSA and azide free) storage buffer at a concentration of 1 mg/mL, ready for conjugation. Created using Proteintech's proprietary in-house recombinant technology. Recombinant production enables unrivalled batch-to-batch consistency, easy scale-up, and future security of supply.

This conjugation ready format makes antibodies ideal for use in many applications including: ELISAs, multiplex assays requiring matched pairs, mass cytometry, and multiplex imaging applications. Antibody use should be optimized by the end user for each application and assay.

Storage

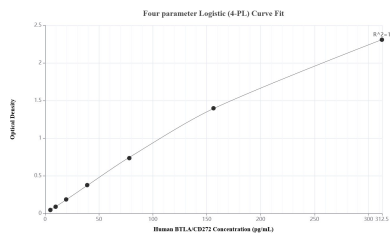
Storage:
Store at -80°C.

Storage Buffer:
PBS Only

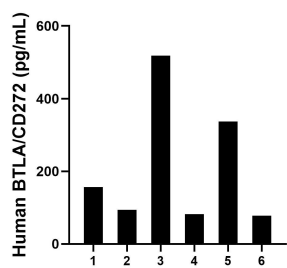
For technical support and original validation data for this product please contact:
T: 1 (888) 4PTGLAB (1-888-478-4522) (toll free in USA), or 1(312) 455-8498 (outside USA)
E: proteintech@ptglab.com
W: ptglab.com

This product is exclusively available under Proteintech Group brand and is not available to purchase from any other manufacturer.

Selected Validation Data



Sandwich ELISA standard curve of MP01168-4, Human BTLA/CD272 Recombinant Matched Antibody Pair - PBS only. 84262-5-PBS was coated to a plate as the capture antibody and incubated with serial dilutions of standard RP02326. 84262-6-PBS was HRP conjugated as the detection antibody. Range: 4.88-313 pg/mL



Serum of six individual healthy human donors was measured. The BTLA/CD272 concentration of detected samples was determined to be 211.0 ng/mL with a range of 78.0-518.0 ng/mL