

For Research Use Only

C7 Recombinant antibody

Catalog Number: 84263-5-RR



Basic Information

Catalog Number:

84263-5-RR

Size:

100ul , Concentration: 1000 µg/ml by Nanodrop;

Source:

Rabbit

Isotype:

IgG

GenBank Accession Number:

NM_000587.4

GeneID (NCBI):

730

UNIPROT ID:

P10643

Full Name:

complement component 7

Calculated MW:

94kDa

Observed MW:

105 kDa

Purification Method:

Protein A purification

CloneNo.:

241551D6

Recommended Dilutions:

WB 1:5000-1:50000

Applications

Tested Applications:

WB, ELISA

Species Specificity:

human

Positive Controls:

WB : human plasma,

Background Information

C7, a single-chain plasma glycoprotein, is a component of the complement system. It is also a constituent of the membrane attack complex (MAC), which plays a key role in the innate and adaptive immune response by forming pores in the plasma membrane of target cells. C7 serves as a membrane anchor. People with C7 deficiency are prone to bacterial infection.

Storage

Storage:

Store at -20°C. Stable for one year after shipment.

Storage Buffer:

PBS with 0.02% sodium azide and 50% glycerol pH 7.3.

Aliquoting is unnecessary for -20°C storage

*** 20ul sizes contain 0.1% BSA

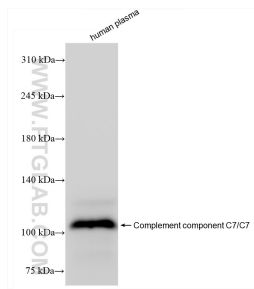
For technical support and original validation data for this product please contact:

T: 1 (888) 4PTGLAB (1-888-478-4522) (toll free in USA), or 1(312) 455-8498 (outside USA)

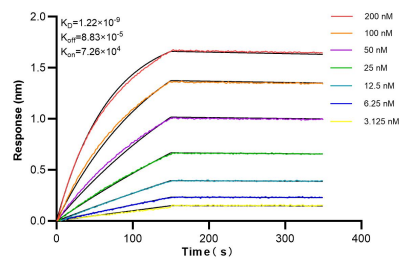
E: proteintech@ptglab.com
W: ptglab.com

This product is exclusively available under Proteintech Group brand and is not available to purchase from any other manufacturer.

Selected Validation Data



human plasma were subjected to SDS PAGE followed by western blot with 84263-5-RR (C7 antibody) at dilution of 1:10000 incubated at room temperature for 1.5 hours.



Biolayer interferometry (BLI) kinetic assays of 84263-5-RR against Human C7 were performed. The affinity constant is 1.22 nM.