

For Research Use Only

IVNS1ABP Recombinant antibody, PBS Only (Detector)

Catalog Number: 84268-1-PBS



Basic Information

Catalog Number: 84268-1-PBS	GenBank Accession Number: BC067739	Purification Method: Protein A purification
Size: 100ug , Concentration: 1 mg/ml by Nanodrop;	GeneID (NCBI): 10625	CloneNo.: 241587B1
Source: Rabbit	UNIPROT ID: Q9Y6Y0	
Isotype: IgG	Full Name: influenza virus NS1A binding protein	
Immunogen Catalog Number: AG6412	Calculated MW: 72 kDa	
	Observed MW: 70 kDa	

Applications

Tested Applications:
WB, IHC, IF/ICC, FC (Intra), Cytometric bead array, Indirect ELISA

Species Specificity:
human, mouse

Product Information

84268-1-PBS targets IVNS1ABP as part of a matched antibody pair:

MP01182-1: 84268-4-PBS capture and 84268-1-PBS detection (validated in Cytometric bead array)

MP01182-2: 84268-2-PBS capture and 84268-1-PBS detection (validated in Cytometric bead array)

Unconjugated rabbit recombinant monoclonal antibody in PBS only (BSA and azide free) storage buffer at a concentration of 1 mg/mL, ready for conjugation. Created using Proteintech's proprietary in-house recombinant technology. Recombinant production enables unrivalled batch-to-batch consistency, easy scale-up, and future security of supply.

This conjugation ready format makes antibodies ideal for use in many applications including: ELISAs, multiplex assays requiring matched pairs, mass cytometry, and multiplex imaging applications. Antibody use should be optimized by the end user for each application and assay.

Background Information

IVNS1ABP is involved in many cell functions, including pre-mRNA splicing, the aryl hydrocarbon receptor (AHR) pathway, F-actin organization and protein ubiquitination. It may play a role in mRNA nuclear export.

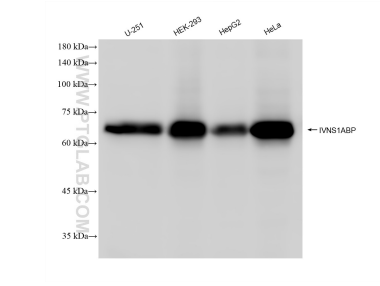
Storage

Storage:
Store at -80°C.
Storage Buffer:
PBS Only

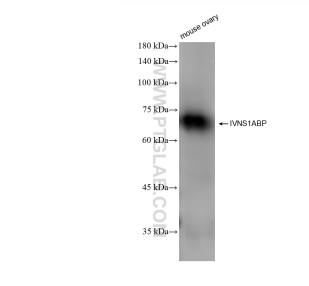
For technical support and original validation data for this product please contact:
T: 1 (888) 4PTGLAB (1-888-478-4522) (toll free in USA), or 1(312) 455-8498 (outside USA)
E: proteintech@ptglab.com
W: ptglab.com

This product is exclusively available under Proteintech Group brand and is not available to purchase from any other manufacturer.

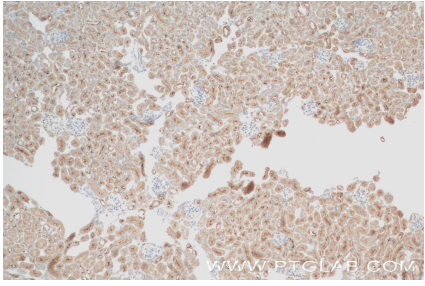
Selected Validation Data



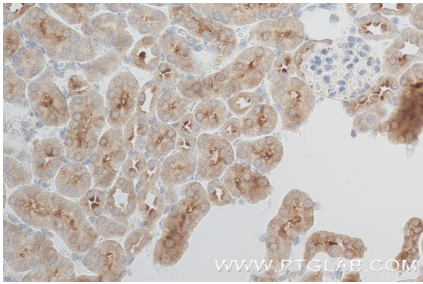
Various lysates were subjected to SDS PAGE followed by western blot with 84268-1-RR (IVNS1ABP antibody) at dilution of 1:5000 incubated at room temperature for 1.5 hours. This data was developed using the same antibody clone with 84268-1-PBS in a different storage buffer formulation.



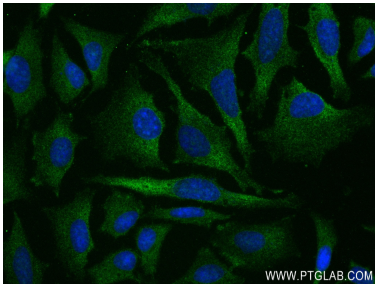
mouse ovary tissue were subjected to SDS PAGE followed by western blot with 84268-1-RR (IVNS1ABP antibody) at dilution of 1:5000 incubated at room temperature for 1.5 hours. This data was developed using the same antibody clone with 84268-1-PBS in a different storage buffer formulation.



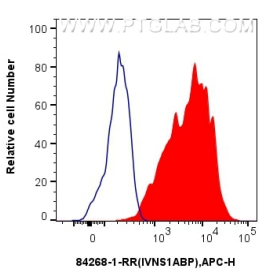
Immunohistochemical analysis of paraffin-embedded mouse kidney tissue slide using 84268-1-RR (IVNS1ABP antibody) at dilution of 1:250 (under 10x lens). Heat mediated antigen retrieval with Tris-EDTA buffer (pH 9.0). This data was developed using the same antibody clone with 84268-1-PBS in a different storage buffer formulation.



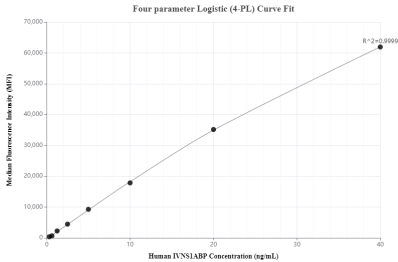
Immunohistochemical analysis of paraffin-embedded mouse kidney tissue slide using 84268-1-RR (IVNS1ABP antibody) at dilution of 1:250 (under 40x lens). Heat mediated antigen retrieval with Tris-EDTA buffer (pH 9.0). This data was developed using the same antibody clone with 84268-1-PBS in a different storage buffer formulation.



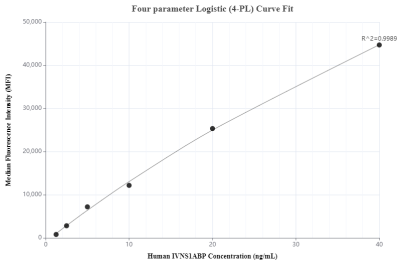
Immunofluorescent analysis of (-20°C Ethanol) fixed HeLa cells using IVNS1ABP antibody (84268-1-RR, Clone: 241587B1) at dilution of 1:250 and Coralite®488-Conjugated Goat Anti-Rabbit IgG(H+L) (SA00013-2). This data was developed using the same antibody clone with 84268-1-PBS in a different storage buffer formulation.



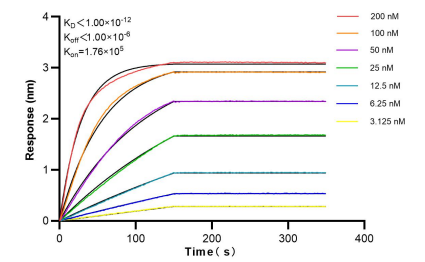
1x10⁶ HeLa cells were intracellularly stained with 0.25 ug IVNS1ABP Recombinant antibody (84268-1-RR, Clone:241587B1) and APC-Conjugated Goat Anti-Rabbit IgG(H+L)(red), or 0.25 ug Isotype Control (blue). Cells were fixed with 4% PFA and permeabilized with Flow Cytometry Perm Buffer (PF00011-C). This data was developed using the same antibody clone with 84268-1-PBS in a different storage buffer formulation.



Cytometric bead array standard curve of MP01182-1, IVNS1ABP Recombinant Matched Antibody Pair, PBS Only. Capture antibody: 84268-4-PBS. Detection antibody: 84268-1-PBS. Standard: Ag6412. Range: 0.313-40 ng/mL



Cytometric bead array standard curve of MP01182-2, IVNS1ABP Recombinant Matched Antibody Pair, PBS Only. Capture antibody: 84268-2-PBS. Detection antibody: 84268-1-PBS. Standard: Ag6412. Range: 1.25-40 ng/mL



Bi-layer interferometry (BLI) kinetic assays of 84268-1-RR against Human IVNS1ABP were performed. The affinity constant is below 1 pM.