

For Research Use Only

# IVNS1ABP Recombinant antibody, PBS Only (Detector)

Catalog Number: 84268-3-PBS



## Basic Information

<b>Catalog Number:</b> 84268-3-PBS	<b>GenBank Accession Number:</b> BC067739	<b>Purification Method:</b> Protein A purification
<b>Size:</b> 100ug , Concentration: 1 mg/ml by Nanodrop;	<b>GeneID (NCBI):</b> 10625	<b>CloneNo.:</b> 241587G2
<b>Source:</b> Rabbit	<b>UNIPROT ID:</b> Q9Y6Y0	
<b>Isotype:</b> IgG	<b>Full Name:</b> influenza virus NS1A binding protein	
<b>Immunogen Catalog Number:</b> AG6412	<b>Calculated MW:</b> 72 kDa	

## Applications

**Tested Applications:**  
Cytometric bead array, Sandwich ELISA, Indirect ELISA, Sample test

**Species Specificity:**  
human

## Product Information

84268-3-PBS targets IVNS1ABP as part of a matched antibody pair:

MP01182-3: 84268-2-PBS capture and 84268-3-PBS detection (validated in Cytometric bead array, Sandwich ELISA)

Unconjugated rabbit recombinant monoclonal antibody in PBS only (BSA and azide free) storage buffer at a concentration of 1 mg/mL, ready for conjugation. Created using Proteintech's proprietary in-house recombinant technology. Recombinant production enables unrivalled batch-to-batch consistency, easy scale-up, and future security of supply.

This conjugation ready format makes antibodies ideal for use in many applications including: ELISAs, multiplex assays requiring matched pairs, mass cytometry, and multiplex imaging applications. Antibody use should be optimized by the end user for each application and assay.

## Storage

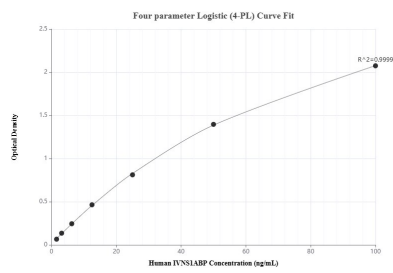
**Storage:**  
Store at -80°C.

**Storage Buffer:**  
PBS Only

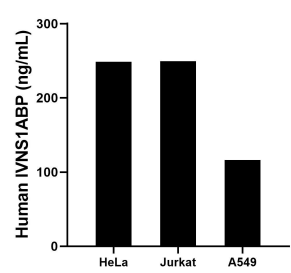
For technical support and original validation data for this product please contact:  
T: 1 (888) 4PTGLAB (1-888-478-4522) (toll free in USA), or 1(312) 455-8498 (outside USA)  
E: [proteintech@ptglab.com](mailto:proteintech@ptglab.com)  
W: [ptglab.com](http://ptglab.com)

This product is exclusively available under Proteintech Group brand and is not available to purchase from any other manufacturer.

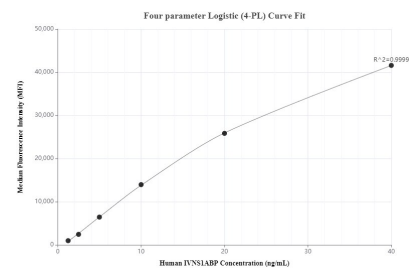
## Selected Validation Data



Sandwich ELISA standard curve of MP01182-3, Human IVNS1ABP Recombinant Matched Antibody Pair - PBS only. 84268-2-PBS was coated to a plate as the capture antibody and incubated with serial dilutions of standard Ag6412. 84268-3-PBS was HRP conjugated as the detection antibody. Range: 1.56-100 ng/mL



The mean IVNS1ABP concentration was determined to be 248.61 ng/mL in HeLa cell extract based on a 1.0 mg/mL extract load, 249.24 ng/mL in Jurkat cell extract based on a 1.5 mg/mL extract load and 116.37 ng/mL in A549 cell extract based on a 2.6 mg/mL extract load.



Cytometric bead array standard curve of MP01182-3, IVNS1ABP Recombinant Matched Antibody Pair, PBS Only. Capture antibody: 84268-2-PBS. Detection antibody: 84268-3-PBS. Standard: Ag6412. Range: 1.25-40 ng/mL