

For Research Use Only

# IL-1R2 Recombinant antibody, PBS Only (Capture/Detector)

Catalog Number: 84269-4-PBS



## Basic Information

|   |  |   |
|---|--|---|
| <b>Catalog Number:</b><br>84269-4-PBS                       | <b>GenBank Accession Number:</b><br>BC039031         | <b>Purification Method:</b><br>Protein A purification |
| <b>Size:</b><br>100ug , Concentration: 1 mg/ml by Nanodrop; | <b>GeneID (NCBI):</b><br>7850                        | <b>CloneNo.:</b><br>241530A4                          |
| <b>Source:</b><br>Rabbit                                    | <b>UNIPROT ID:</b><br>P27930                         |   |
| <b>Isotype:</b><br>IgG                                      | <b>Full Name:</b><br>interleukin 1 receptor, type II |   |
|   | <b>Calculated MW:</b><br>398 aa, 45 kDa              |   |

## Applications

**Tested Applications:**  
Cytometric bead array, Sandwich ELISA, Indirect ELISA, Sample test

**Species Specificity:**  
human

## Product Information

84269-4-PBS targets IL-1R2 as part of a matched antibody pair:

MP01178-1: 84269-4-PBS capture and 84269-2-PBS detection (validated in Cytometric bead array)

MP01178-2: 84269-4-PBS capture and 84269-1-PBS detection (validated in Cytometric bead array)

MP01178-4: 84269-1-PBS capture and 84269-4-PBS detection (validated in Sandwich ELISA)

Unconjugated rabbit recombinant monoclonal antibody in PBS only (BSA and azide free) storage buffer at a concentration of 1 mg/mL, ready for conjugation. Created using Proteintech's proprietary in-house recombinant technology. Recombinant production enables unrivalled batch-to-batch consistency, easy scale-up, and future security of supply.

This conjugation ready format makes antibodies ideal for use in many applications including: ELISAs, multiplex assays requiring matched pairs, mass cytometry, and multiplex imaging applications. Antibody use should be optimized by the end user for each application and assay.

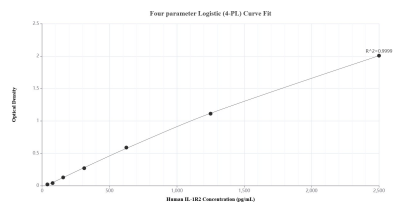
## Storage

**Storage:**  
Store at -80°C.  
**Storage Buffer:**  
PBS Only

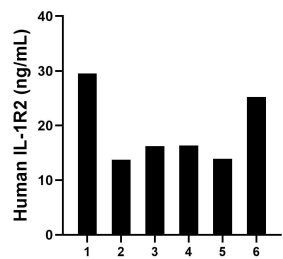
For technical support and original validation data for this product please contact:  
T: 1 (888) 4PTGLAB (1-888-478-4522) (toll free in USA), or 1(312) 455-8498 (outside USA)  
E: proteintech@ptglab.com  
W: ptglab.com

This product is exclusively available under Proteintech Group brand and is not available to purchase from any other manufacturer.

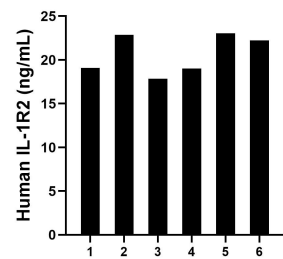
Selected Validation Data



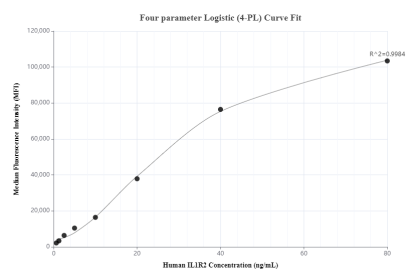
Sandwich ELISA standard curve of MP01178-4, Human IL-1R2 Recombinant Matched Antibody Pair - PBS only. 84269-1-PBS was coated to a plate as the capture antibody and incubated with serial dilutions of standard Eg0118. 84269-4-PBS was HRP conjugated as the detection antibody. Range: 39.1-2500 pg/mL.



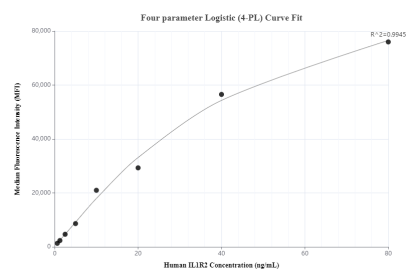
Plasma of six individual healthy human donors was measured. The IL-1R2 concentration of detected samples was determined to be 19.2 ng/mL with a range of 13.8-29.5 ng/mL.



Serum of six individual healthy human donors was measured. The IL-1R2 concentration of detected samples was determined to be 20.7 ng/mL with a range of 17.9-23.0 ng/mL.



Cytometric bead array standard curve of MP01178-1, IL-1R2 Recombinant Matched Antibody Pair, PBS Only. Capture antibody: 84269-4-PBS. Detection antibody: 84269-2-PBS. Standard: Eg0118. Range: 0.625-80 ng/mL.



Cytometric bead array standard curve of MP01178-2, IL-1R2 Recombinant Matched Antibody Pair, PBS Only. Capture antibody: 84269-4-PBS. Detection antibody: 84269-1-PBS. Standard: Eg0118. Range: 0.625-80 ng/mL.