

For Research Use Only

CDK1 Recombinant antibody

Catalog Number: 84271-1-RR



Basic Information

Catalog Number: 84271-1-RR	GenBank Accession Number: BC014563	Purification Method: Protein A purification
Size: 100ul , Concentration: 600 µg/ml by Nanodrop;	GeneID (NCBI): 983	CloneNo.: 240937C5
Source: Rabbit	UNIPROT ID: P06493	Recommended Dilutions: WB 1:5000-1:50000 IF/ICC 1:250-1:1000
Isotype: IgG	Full Name: cell division cycle 2, G1 to S and G2 to M	
Immunogen Catalog Number: AG29018	Calculated MW: 25 kDa	
	Observed MW: 34 kDa	

Applications

Tested Applications: WB, IF/ICC, ELISA	Positive Controls:
Species Specificity: human, mouse	WB : HEK-293 cells, HeLa cells, HepG2 cells, Jurkat cells, K-562 cells, NIH/3T3 cells, C6 cells
	IF/ICC : HeLa cells,

Background Information

CDK1, also named as CDC2, belongs to the protein kinase superfamily, CMGC Ser/Thr protein kinase family and CDC2/CDKX subfamily. CDK1 plays a key role in the control of the eukaryotic cell cycle. It is required in higher cells for entry into S-phase and mitosis. CDK1 is a catalytic subunit of the highly conserved protein kinase complex known as M-phase promoting factor (MPF), which is essential for G1/S and G2/M phase transitions of eukaryotic cell cycle. It is a component of the kinase complex that phosphorylates the repetitive C-terminus of RNA polymerase II. Mitotic cyclins stably associate with CDK1 and function as regulatory subunits. CDK1 has 2 isoforms produced by alternative splicing with the molecular mass of 34 kDa and 27 kDa. This antibody may have cross reaction with CDK2.

Storage

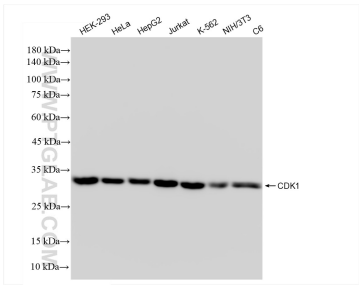
Storage:
Store at -20°C. Stable for one year after shipment.
Storage Buffer:
PBS with 0.02% sodium azide and 50% glycerol pH 7.3.
Aliquoting is unnecessary for -20°C storage

*** 20ul sizes contain 0.1% BSA

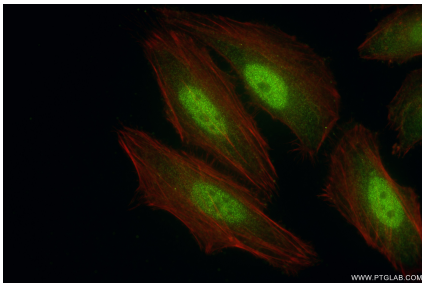
For technical support and original validation data for this product please contact:
T: 1 (888) 4PTGLAB (1-888-478-4522) (toll free in USA), or 1(312) 455-8498 (outside USA)
E: proteintech@ptglab.com
W: ptglab.com

This product is exclusively available under Proteintech Group brand and is not available to purchase from any other manufacturer.

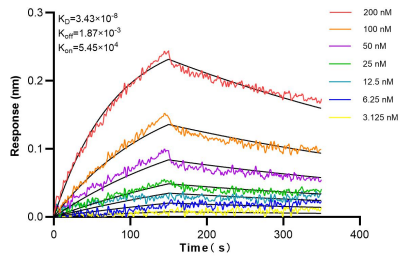
Selected Validation Data



Various lysates were subjected to SDS PAGE followed by western blot with 84271-1-RR (CDK1 antibody) at dilution of 1:10000 incubated at room temperature for 1.5 hours.



Immunofluorescent analysis of (4% PFA) fixed HeLa cells using CDK1 antibody (84271-1-RR, Clone: 240937C5) at dilution of 1:500 and CoraLite® 488-Conjugated Goat Anti-Rabbit IgG(H+L) (SA00013-2), CL594-Phalloidin (red).



Biolayer interferometry (BLI) kinetic assays of 84271-1-RR against Human CDK1 were performed. The affinity constant is 34.3 nM.