

For Research Use Only

METTL1 Recombinant antibody

Catalog Number: 84272-1-RR



Basic Information

Catalog Number: 84272-1-RR	GenBank Accession Number: BC000550	Purification Method: Protein A purification
Size: 100ul , Concentration: 1000 µg/ml by Nanodrop;	GeneID (NCBI): 4234	CloneNo.: 241108G8
Source: Rabbit	UNIPROT ID: Q9UBP6	Recommended Dilutions: WB 1:5000-1:50000 IF/ICC 1:250-1:1000
Isotype: IgG	Full Name: methyltransferase like 1	
Immunogen Catalog Number: AG7055	Calculated MW: 31 kDa	
	Observed MW: 31-35 kDa	

Applications

Tested Applications: WB, IF/ICC, FC (Intra), ELISA	Positive Controls:
Species Specificity: human, mouse	WB : A549 cells, HeLa cells, HepG2 cells, Caco-2 cells, HuH-7 cells, mouse brain tissue
	IF/ICC : A549 cells,

Background Information

METTL1 methyltransferase mediates m7G methylation within miRNAs and regulates cell migration via its catalytic activity. METTL1 can be inactivated by phosphorylation at Ser27 by protein kinase B (PKB). Overexpression of METTL1 is widely observed among human cancers. It is also crucial for the regulation of chemoresistance in cancer treatment. In addition, mutations in the human N7-methylguanosine (m7G) methyltransferase complex METTL1/WDR4 cause primordial dwarfism and brain malformation.

Storage

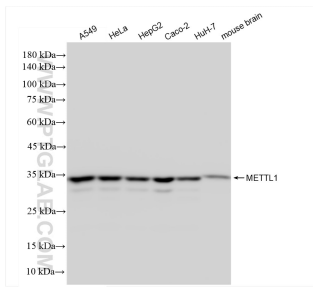
Storage:
Store at -20°C. Stable for one year after shipment.
Storage Buffer:
PBS with 0.02% sodium azide and 50% glycerol pH 7.3.
Aliquoting is unnecessary for -20°C storage

*** 20ul sizes contain 0.1% BSA

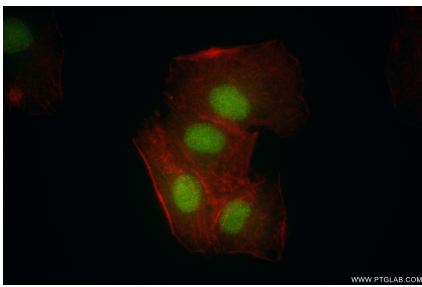
For technical support and original validation data for this product please contact:
T: 1 (888) 4PTGLAB (1-888-478-4522) (toll free in USA), or 1(312) 455-8498 (outside USA)
E: proteintech@ptglab.com
W: ptglab.com

This product is exclusively available under Proteintech Group brand and is not available to purchase from any other manufacturer.

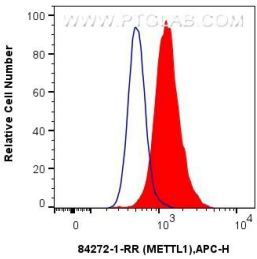
Selected Validation Data



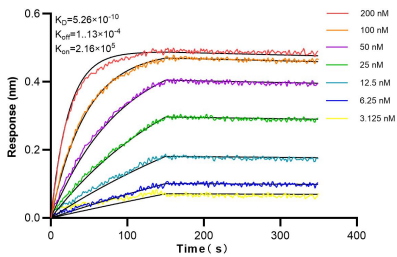
Various lysates were subjected to SDS PAGE followed by western blot with 84272-1-RR (METTL1 antibody) at dilution of 1:10000 incubated at room temperature for 1.5 hours.



Immunofluorescent analysis of (4% PFA) fixed A549 cells using METTL1 antibody (84272-1-RR, Clone: 241108G8) at dilution of 1:500 and CoraLite® 488-Conjugated Goat Anti-Rabbit IgG(H+L) (SA00013-2), CL594-Phalloidin (red).



1x10⁶ A431 cells were intracellularly stained with 0.25 ug METTL1 Recombinant antibody (84272-1-RR, Clone:241108G8) and APC-Conjugated Goat Anti-Rabbit IgG(H+L)(red), or 0.25 ug Isotype Control (blue). Cells were fixed and permeabilized with True-Nuclear Transcription Factor Buffer Set.



Bioluminescence resonance energy transfer (BRET) kinetic assays of 84272-1-RR against Human METTL1 were performed. The affinity constant is 0.526 nM.