

For Research Use Only

METTL1 Recombinant antibody, PBS Only (Detector)

Catalog Number: 84272-2-PBS



Basic Information

Catalog Number: 84272-2-PBS	GenBank Accession Number: BC000550	Purification Method: Protein A purification
Size: 100ug, Concentration: 1 mg/ml by Nanodrop;	GeneID (NCBI): 4234	CloneNo.: 241108F10
Source: Rabbit	UNIPROT ID: Q9UBP6	
Isotype: IgG	Full Name: methyltransferase like 1	
Immunogen Catalog Number: AG7055	Calculated MW: 31 kDa	

Applications

Tested Applications:
Sandwich ELISA, Indirect ELISA, Sample test

Species Specificity:
human

Product Information

84272-2-PBS targets METTL1 as part of a matched antibody pair:

MP01400-1: 84272-3-PBS capture and 84272-2-PBS detection (validated in Sandwich ELISA)

Unconjugated rabbit recombinant monoclonal antibody in PBS only (BSA and azide free) storage buffer at a concentration of 1 mg/mL, ready for conjugation. Created using Proteintech's proprietary in-house recombinant technology. Recombinant production enables unrivalled batch-to-batch consistency, easy scale-up, and future security of supply.

This conjugation ready format makes antibodies ideal for use in many applications including: ELISAs, multiplex assays requiring matched pairs, mass cytometry, and multiplex imaging applications. Antibody use should be optimized by the end user for each application and assay.

Storage

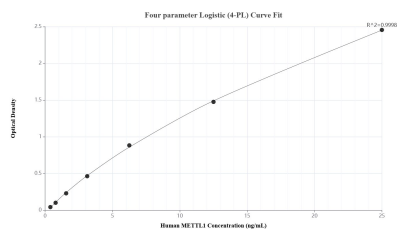
Storage:
Store at -80°C.

Storage Buffer:
PBS Only

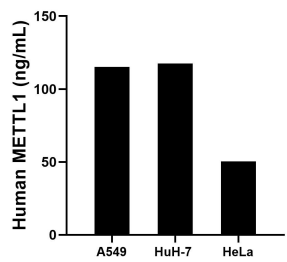
For technical support and original validation data for this product please contact:
T: 1 (888) 4PTGLAB (1-888-478-4522) (toll free in USA), or 1(312) 455-8498 (outside USA)
E: proteintech@ptglab.com
W: ptglab.com

This product is exclusively available under Proteintech Group brand and is not available to purchase from any other manufacturer.

Selected Validation Data



Sandwich ELISA standard curve of MP01400-1, Human METTL1 Recombinant Matched Antibody Pair - PBS only. 84272-3-PBS was coated to a plate as the capture antibody and incubated with serial dilutions of standard Ag7055. 84272-2-PBS was HRP conjugated as the detection antibody. Range: 0.391-25 ng/mL.



The mean METTL1 concentration was determined to be 115.10 ng/mL in A549 cell extract based on a 2.50 mg/mL extract load, 117.58 ng/mL in Huh-7 cell extract based on a 1.40 mg/mL extract load and 50.30 ng/mL in HeLa cell extract based on a 1.20 mg/mL extract load.