

For Research Use Only

# NSUN4 Recombinant antibody, PBS Only

Catalog Number: 84275-3-PBS



## Basic Information

<b>Catalog Number:</b> 84275-3-PBS	<b>GenBank Accession Number:</b> BC014441	<b>Purification Method:</b> Protein A purification
<b>Size:</b> 100ug , Concentration: 1 mg/ml by Nanodrop;	<b>GeneID (NCBI):</b> 387338	<b>CloneNo.:</b> 241115G11
<b>Source:</b> Rabbit	<b>UNIPROT ID:</b> Q96CB9	
<b>Isotype:</b> IgG	<b>Full Name:</b> NOL1/NOP2/Sun domain family, member 4	
<b>Immunogen Catalog Number:</b> AG31828	<b>Calculated MW:</b> 384 aa, 43 kDa	

## Applications

**Tested Applications:**  
IF/ICC, Indirect ELISA

**Species Specificity:**  
human

## Background Information

NSUN4 belongs to a family of RNA 5-methylcytosine (m5C) methyltransferases (MTases). MTERF4 recruits NSUN4 to the large ribosomal subunit in a process crucial for mitochondrial ribosome biogenesis. NSUN4 is a dual function protein, which on the one hand is needed for 12S rRNA methylation, and on the other hand interacts with MTERF4 to facilitate mitoribosomal assembly.

## Storage

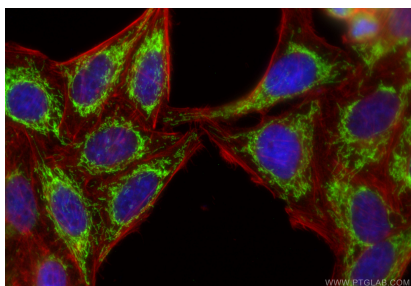
**Storage:**  
Store at -80°C.

**Storage Buffer:**  
PBS Only

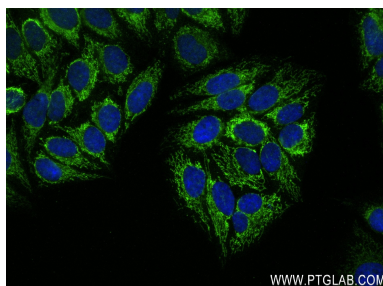
For technical support and original validation data for this product please contact:  
T: 1 (888) 4PTGLAB (1-888-478-4522) (toll free in USA), or 1(312) 455-8498 (outside USA)  
E: [proteintech@ptglab.com](mailto:proteintech@ptglab.com)  
W: [ptglab.com](http://ptglab.com)

This product is exclusively available under Proteintech Group brand and is not available to purchase from any other manufacturer.

## Selected Validation Data



Immunofluorescent analysis of (4% PFA) fixed HepG2 cells using NSUN4 antibody (84275-3-RR, Clone: 241115G11 ) at dilution of 1:500 and CoraLite®488-Conjugated Goat Anti-Rabbit IgG(H+L) (SA00013-2), CL594-phalloidin (red). This data was developed using the same antibody clone with 84275-3-PBS in a different storage buffer formulation.



Immunofluorescent analysis of (4% PFA) fixed HepG2 cells using NSUN4 antibody (84275-3-RR, Clone: 241115G11 ) at dilution of 1:400 and CoraLite®488-Conjugated AffiniPure Goat Anti-Rabbit IgG(H+L) (SA00013-2), CL594-Phalloidin (red). This data was developed using the same antibody clone with 84275-3-PBS in a different storage buffer formulation.