

For Research Use Only

NME3 Recombinant antibody, PBS Only (Capture)

Catalog Number: 84278-5-PBS



Basic Information

Catalog Number: 84278-5-PBS	GenBank Accession Number: BC000250	Purification Method: Protein A purification
Size: 100ug, Concentration: 1 mg/ml by Nanodrop;	GeneID (NCBI): 4832	CloneNo.: 241585H7
Source: Rabbit	UNIPROT ID: Q13232	
Isotype: IgG	Full Name: non-metastatic cells 3, protein expressed in	
Immunogen Catalog Number: AG7284	Calculated MW: 19 kDa	
	Observed MW: 18 kDa	

Applications

Tested Applications:
WB, IHC, IF/ICC, Cytometric bead array, Indirect ELISA

Species Specificity:
human, rat

Product Information

84278-5-PBS targets NME3 as part of a matched antibody pair:

MP01200-2: 84278-5-PBS capture and 84278-1-PBS detection (validated in Cytometric bead array)

Unconjugated rabbit recombinant monoclonal antibody in PBS only (BSA and azide free) storage buffer at a concentration of 1 mg/mL, ready for conjugation. Created using Proteintech's proprietary in-house recombinant technology. Recombinant production enables unrivalled batch-to-batch consistency, easy scale-up, and future security of supply.

This conjugation ready format makes antibodies ideal for use in many applications including: ELISAs, multiplex assays requiring matched pairs, mass cytometry, and multiplex imaging applications. Antibody use should be optimized by the end user for each application and assay.

Background Information

NME3 (NME/NM23 Nucleoside Diphosphate Kinase 3), also named as NM23-H3; DR-NM23, is a member of the nucleoside diphosphate kinase (NDPK) family that binds to the mitochondrial outer membrane to stimulate mitochondrial fusion. The depletion of NME3 will cause dysfunction in mitochondrial dynamics. NME3 has been found to facilitate DNA-repair mechanisms binds to several NPHPs, including NEK8, CEP164, and ankyrin repeat and sterile α motif domain-containing 6 (ANKS6)

Storage

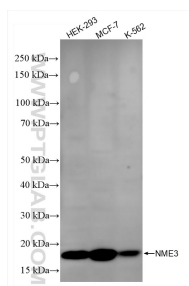
Storage:
Store at -80°C.

Storage Buffer:
PBS Only

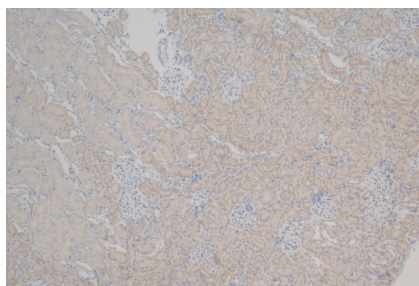
For technical support and original validation data for this product please contact:
T: 1 (888) 4PTGLAB (1-888-478-4522) (toll free in USA), or 1(312) 455-8498 (outside USA)
E: proteintech@ptglab.com
W: ptglab.com

This product is exclusively available under Proteintech Group brand and is not available to purchase from any other manufacturer.

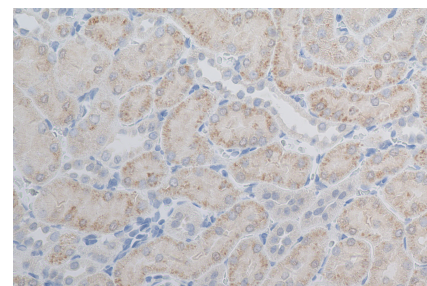
Selected Validation Data



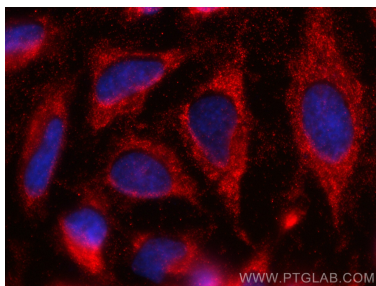
Various lysates were subjected to SDS PAGE followed by western blot with 84278-5-RR (NME3 antibody) at dilution of 1:10000 incubated at room temperature for 1.5 hours. This data was developed using the same antibody clone with 84278-5-PBS in a different storage buffer formulation.



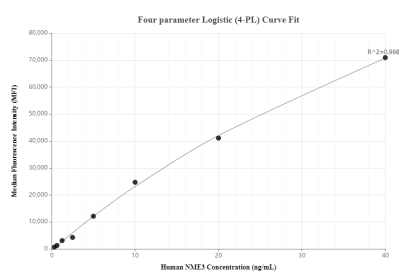
Immunohistochemical analysis of paraffin-embedded rat kidney tissue slide using 84278-5-RR (NME3 antibody) at dilution of 1:200 (under 10x lens). Heat mediated antigen retrieval with Tris-EDTA buffer (pH 9.0). This data was developed using the same antibody clone with 84278-5-PBS in a different storage buffer formulation.



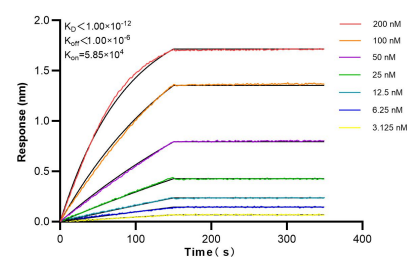
Immunohistochemical analysis of paraffin-embedded rat kidney tissue slide using 84278-5-RR (NME3 antibody) at dilution of 1:200 (under 40x lens). Heat mediated antigen retrieval with Tris-EDTA buffer (pH 9.0). This data was developed using the same antibody clone with 84278-5-PBS in a different storage buffer formulation.



Immunofluorescent analysis of (-20°C Ethanol) fixed HeLa cells using NME3 antibody (84278-5-RR, Clone: 241585H7) at dilution of 1:500 and CoraLite®594-Conjugated Goat Anti-Rabbit IgG(H+L) (SA00013-4). This data was developed using the same antibody clone with 84278-5-PBS in a different storage buffer formulation.



Cytometric bead array standard curve of MP01200-2, NME3 Recombinant Matched Antibody Pair, PBS Only. Capture antibody: 84278-5-PBS. Detection antibody: 84278-1-PBS. Standard: Ag7284. Range: 0.313-40 ng/mL.



Bi-layer interferometry (BLI) kinetic assays of 84278-5-RR against Human NME3 were performed. The affinity constant is below 1 pM.