

For Research Use Only

NME3 Recombinant antibody

Catalog Number: 84278-5-RR



Basic Information

Catalog Number: 84278-5-RR	GenBank Accession Number: BC000250	Purification Method: Protein A purification
Size: 100ul , Concentration: 1000 µg/ml by Nanodrop;	GeneID (NCBI): 4832	CloneNo.: 241585H7
Source: Rabbit	UNIPROT ID: Q13232	Recommended Dilutions: WB 1:5000-1:50000 IHC 1:50-1:500 IF/ICC 1:200-1:500
Isotype: IgG	Full Name: non-metastatic cells 3, protein expressed in	
Immunogen Catalog Number: AG7284	Calculated MW: 19 kDa	
	Observed MW: 18 kDa	

Applications

Tested Applications: WB, IHC, IF/ICC, ELISA	Positive Controls: WB : HEK-293 cells, MCF-7 cells, K-562 cells IHC : rat kidney tissue, IF/ICC : HeLa cells,
Species Specificity: human, rat	
Note-IHC: suggested antigen retrieval with TE buffer pH 9.0; (*) Alternatively, antigen retrieval may be performed with citrate buffer pH 6.0	

Background Information

NME3 (NME/NM23 Nucleoside Diphosphate Kinase 3), also named as NM23-H3; DR-NM23, is a member of the nucleoside diphosphate kinase (NDPK) family that binds to the mitochondrial outer membrane to stimulate mitochondrial fusion. The depletion of NME3 will cause dysfunction in mitochondrial dynamics. NME3 has been found to facilitate DNA-repair mechanisms binds to several NPHPs, including NEK8, CEP164, and ankyrin repeat and sterile α motif domain-containing 6 (ANKS6)

Storage

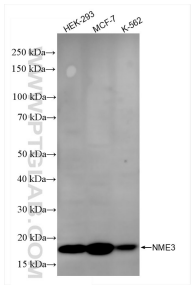
Storage:
Store at -20°C. Stable for one year after shipment.
Storage Buffer:
PBS with 0.02% sodium azide and 50% glycerol pH 7.3.
Aliquoting is unnecessary for -20°C storage

*** 20ul sizes contain 0.1% BSA

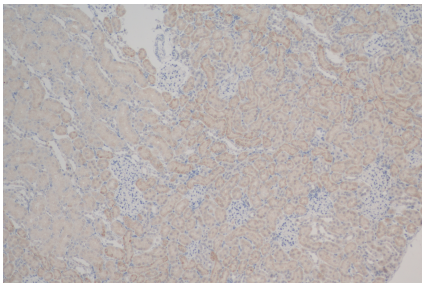
For technical support and original validation data for this product please contact:
T: 1 (888) 4PTGLAB (1-888-478-4522) (toll free in USA), or 1(312) 455-8498 (outside USA)
E: proteintech@ptglab.com
W: ptglab.com

This product is exclusively available under Proteintech Group brand and is not available to purchase from any other manufacturer.

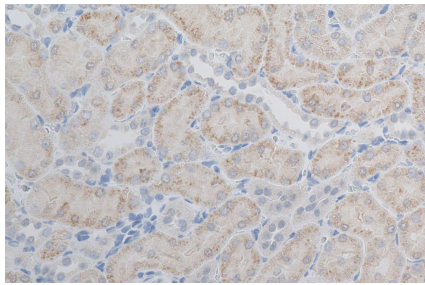
Selected Validation Data



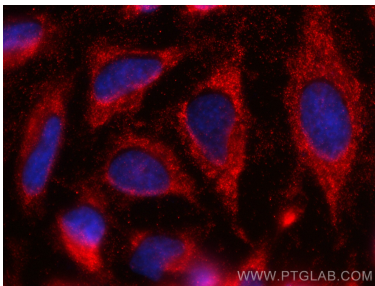
Various lysates were subjected to SDS PAGE followed by western blot with 84278-5-RR (NME3 antibody) at dilution of 1:10000 incubated at room temperature for 1.5 hours.



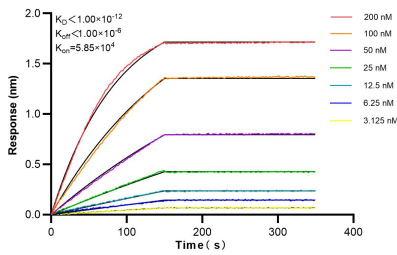
Immunohistochemical analysis of paraffin-embedded rat kidney tissue slide using 84278-5-RR (NME3 antibody) at dilution of 1:200 (under 10x lens). Heat mediated antigen retrieval with Tris-EDTA buffer (pH 9.0).



Immunohistochemical analysis of paraffin-embedded rat kidney tissue slide using 84278-5-RR (NME3 antibody) at dilution of 1:200 (under 40x lens). Heat mediated antigen retrieval with Tris-EDTA buffer (pH 9.0).



Immunofluorescent analysis of (-20°C Ethanol) fixed HeLa cells using NME3 antibody (84278-5-RR, Clone: 241585H7) at dilution of 1:500 and CoraLite®594-Conjugated Goat Anti-Rabbit IgG(H+L) (SA00013-4).



Biolayer interferometry (BLI) kinetic assays of 84278-5-RR against Human NME3 were performed. The affinity constant is below 1 pM.