

For Research Use Only

MLPH Recombinant antibody, PBS Only (Capture)

Catalog Number: 84282-1-PBS



Basic Information

Catalog Number: 84282-1-PBS	GenBank Accession Number: BC001653	Purification Method: Protein A purification
Size: 100ug , Concentration: 1 mg/ml by Nanodrop;	GeneID (NCBI): 79083	CloneNo.: 241621G4
Source: Rabbit	UNIPROT ID: Q9BV36	
Isotype: IgG	Full Name: melanophilin	
Immunogen Catalog Number: AG32931	Calculated MW: 66 kDa	
	Observed MW: 66 kDa, 80 kDa	

Applications

Tested Applications:
WB, IHC, Sandwich ELISA, Indirect ELISA, Sample test

Species Specificity:
human

Product Information

84282-1-PBS targets MLPH as part of a matched antibody pair:

MP01196-3: 84282-1-PBS capture and 84282-4-PBS detection (validated in Sandwich ELISA)

Unconjugated rabbit recombinant monoclonal antibody in PBS only (BSA and azide free) storage buffer at a concentration of 1 mg/mL, ready for conjugation. Created using Proteintech's proprietary in-house recombinant technology. Recombinant production enables unrivalled batch-to-batch consistency, easy scale-up, and future security of supply.

This conjugation ready format makes antibodies ideal for use in many applications including: ELISAs, multiplex assays requiring matched pairs, mass cytometry, and multiplex imaging applications. Antibody use should be optimized by the end user for each application and assay.

Background Information

Melanophilin (Mlph) is a member of the exophilin subfamily of Rab effector proteins. MLPH is a modular protein, forming a ternary complex with the small Ras-related GTPase Rab27A in its GTP-bound form and the motor protein myosin Va. It regulates retention of melanosomes at the peripheral actin cytoskeleton of melanocytes, a process essential for normal mammalian pigmentation. Defects in MLPH are a cause of Griscelli syndrome type 3 (GS3), which is characterized by a silver-gray hair color and abnormal pigment distribution in the hair shaft.

Storage

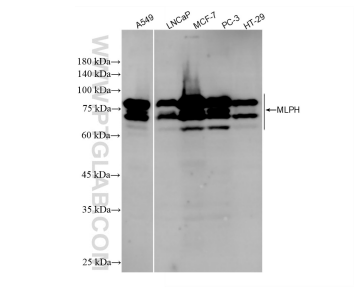
Storage:
Store at -80°C.

Storage Buffer:
PBS only, pH7.3

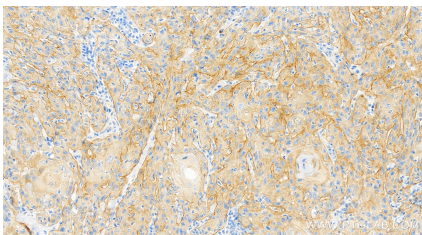
For technical support and original validation data for this product please contact:
T: 1 (888) 4PTGLAB (1-888-478-4522) (toll free in USA), or 1(312) 455-8498 (outside USA)
E: proteintech@ptglab.com
W: ptglab.com

This product is exclusively available under Proteintech Group brand and is not available to purchase from any other manufacturer.

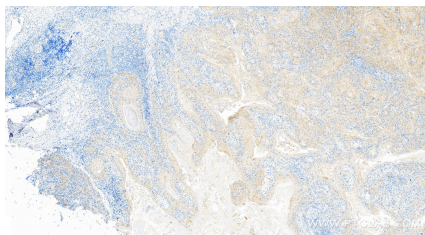
Selected Validation Data



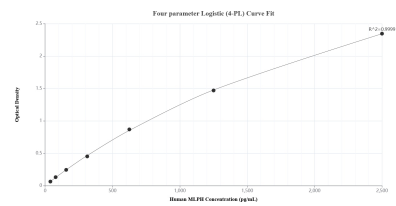
Various lysates were subjected to SDS PAGE followed by western blot with 84282-1-RR (MLPH antibody) at dilution of 1:5000 incubated at room temperature for 1.5 hours. This data was developed using the same antibody clone with 84282-1-PBS in a different storage buffer formulation.



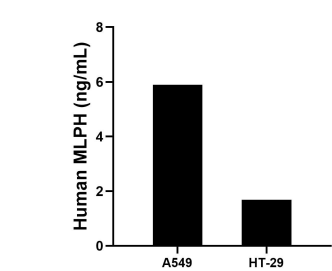
Immunohistochemical analysis of paraffin-embedded human skin cancer tissue slide using 84282-1-RR (MLPH antibody) at dilution of 1:400 (under 40x lens). Heat mediated antigen retrieval with Tris-EDTA buffer (pH 9.0). This data was developed using the same antibody clone with 84282-1-PBS in a different storage buffer formulation.



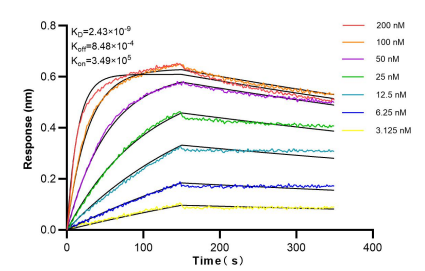
Immunohistochemical analysis of paraffin-embedded human skin cancer tissue slide using 84282-1-RR (MLPH antibody) at dilution of 1:400 (under 10x lens). Heat mediated antigen retrieval with Tris-EDTA buffer (pH 9.0). This data was developed using the same antibody clone with 84282-1-PBS in a different storage buffer formulation.



Sandwich ELISA standard curve of MP01196-3, Human MLPH Recombinant Matched Antibody Pair - PBS only. 84282-1-PBS was coated to a plate as the capture antibody and incubated with serial dilutions of standard Ag32931. 84282-4-PBS was HRP conjugated as the detection antibody. Range: 39.1-2500 pg/mL.



The mean MLPH concentration was determined to be 5.9 ng/mL in A549 cell extract based on a 1.5 mg/mL extract load and 1.7 ng/mL in HT-29 cell extract based on a 1.5 mg/mL extract load.



Biolayer interferometry (BLI) kinetic assays of 84282-1-RR against Human MLPH were performed. The affinity constant is 2.43 nM.