

For Research Use Only

Ch-TOG Recombinant antibody, PBS Only (Detector)

Catalog Number: 84285-3-PBS



Basic Information

Catalog Number: 84285-3-PBS	GenBank Accession Number: BC120869	Purification Method: Protein A purification
Size: 100ug , Concentration: 1 mg/ml by Nanodrop;	GeneID (NCBI): 9793	CloneNo.: 241546G8
Source: Rabbit	UNIPROT ID: Q14008	
Isotype: IgG	Full Name: cytoskeleton associated protein 5	
Immunogen Catalog Number: AG24875	Observed MW: 220 kDa	

Applications

Tested Applications:
WB, IHC, IF/ICC, FC (Intra), Cytometric bead array, Indirect ELISA

Species Specificity:
human

Product Information

84285-3-PBS targets Ch-TOG as part of a matched antibody pair:

MP01203-1: 84285-1-PBS capture and 84285-3-PBS detection (validated in Cytometric bead array)

Unconjugated rabbit recombinant monoclonal antibody in PBS only (BSA and azide free) storage buffer at a concentration of 1 mg/mL, ready for conjugation. Created using Proteintech's proprietary in-house recombinant technology. Recombinant production enables unrivalled batch-to-batch consistency, easy scale-up, and future security of supply.

This conjugation ready format makes antibodies ideal for use in many applications including: ELISAs, multiplex assays requiring matched pairs, mass cytometry, and multiplex imaging applications. Antibody use should be optimized by the end user for each application and assay.

Background Information

Ch-TOG (colonic hepatic tumor-overexpressed gene), also known as XMAP215 or CKAP5, is a microtubule polymerase which can promotes cytoplasmic microtubule nucleation and elongation. Through interacting with Aurora-A and TACC3, it plays a major role in organizing spindle poles.

Storage

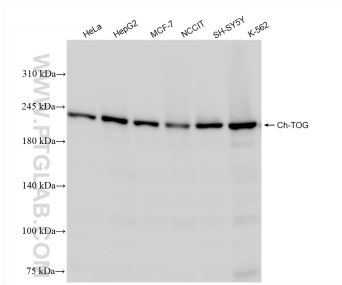
Storage:
Store at -80°C.

Storage Buffer:
PBS Only

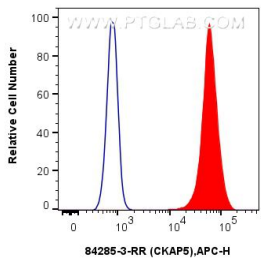
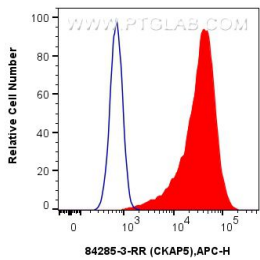
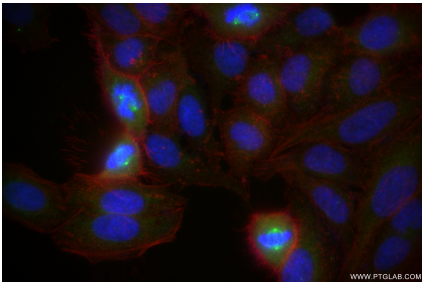
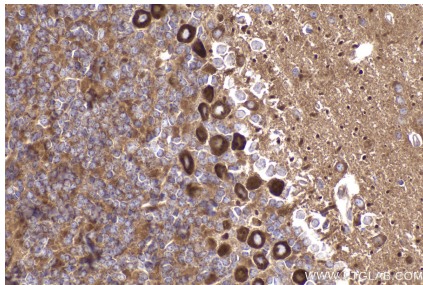
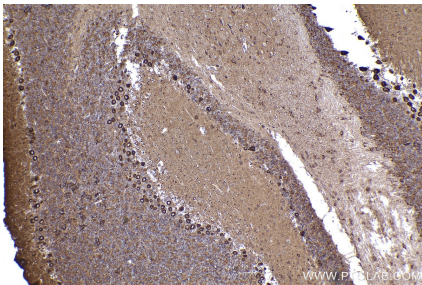
For technical support and original validation data for this product please contact:
T: 1 (888) 4PTGLAB (1-888-478-4522) (toll free in USA), or 1(312) 455-8498 (outside USA)
E: proteintech@ptglab.com
W: ptglab.com

This product is exclusively available under Proteintech Group brand and is not available to purchase from any other manufacturer.

Selected Validation Data



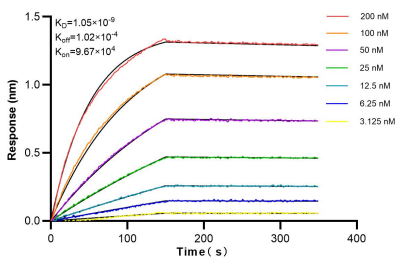
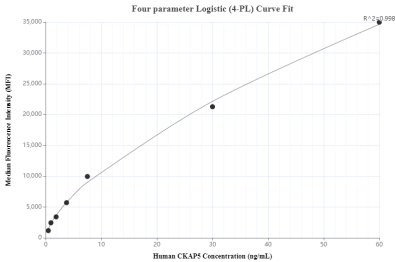
Various lysates were subjected to SDS PAGE followed by western blot with 84285-3-RR (Ch-TOG antibody) at dilution of 1:10000 incubated at room temperature for 1.5 hours. This data was developed using the same antibody clone with 84285-3-PBS in a different storage buffer formulation.



Immunofluorescent analysis of (4% PFA) fixed HepG2 cells using Ch-TOG antibody (84285-3-RR, Clone: 241546G8) at dilution of 1:200 and CoraLite@488-Conjugated Goat Anti-Rabbit IgG(H+L) (SA00013-2), CL594-Phalloidin (red). This data was developed using the same antibody clone with 84285-3-PBS in a different storage buffer formulation.

1x10⁶ HeLa cells were intracellularly stained with 0.25 ug Ckap5 Recombinant Antibody (84285-3-RR, Clone:241546G8) and APC-Conjugated Goat Anti-Rabbit IgG(H+L)(red), or 0.25 ug Isotype Control (blue). Cells were fixed with 4% PFA and permeabilized with Flow Cytometry Perm Buffer (PF00011-C). This data was developed using the same antibody clone with 84285-3-PBS in a different storage buffer formulation.

1x10⁶ A549 cells were intracellularly stained with 0.25 ug Ckap5 Recombinant Antibody (84285-3-RR, Clone:241546G8) and APC-Conjugated Goat Anti-Rabbit IgG(H+L)(red), or 0.25 ug Isotype Control (blue). Cells were fixed with 4% PFA and permeabilized with Flow Cytometry Perm Buffer (PF00011-C). This data was developed using the same antibody clone with 84285-3-PBS in a different storage buffer formulation.



Cytometric bead array standard curve of MP01203-1, Ch-TOG Recombinant Matched Antibody Pair, PBS Only. Capture antibody: 84285-1-PBS. Detection antibody: 84285-3-PBS. Standard: Ag24875. Range: 0.469-60 ng/mL.

Biolayer interferometry (BLI) kinetic assays of 84285-3-RR against Human Ch-TOG were performed. The affinity constant is 1.05 nM.