

For Research Use Only

REG Recombinant antibody, PBS Only

Catalog Number: 84287-3-PBS



Basic Information

Catalog Number: 84287-3-PBS	GenBank Accession Number: BC005350	Purification Method: Protein A purification
Size: 100ug , Concentration: 1 mg/ml by Nanodrop;	GeneID (NCBI): 5967	CloneNo.: 241617H2
Source: Rabbit	UNIPROT ID: P05451	
Isotype: IgG	Full Name: regenerating islet-derived 1 alpha	
Immunogen Catalog Number: AG8640	Calculated MW: 166 aa, 19 kDa	
	Observed MW: 16 kDa	

Applications

Tested Applications:
WB, Indirect ELISA

Species Specificity:
human, mouse, rat

Background Information

The Reg gene family is a multigene family grouped into four subclasses, types I, II, III and IV, based on the primary structures of the encoded proteins. This gene encodes a protein that is secreted by the exocrine pancreas. It is associated with islet cell regeneration and diabetogenesis and may be involved in pancreatic lithogenesis. It's reported that REG1A was significantly upregulated in tumor specimens and adenoma as compared to normal colorectal tissue. (PMID: 34698109)

Storage

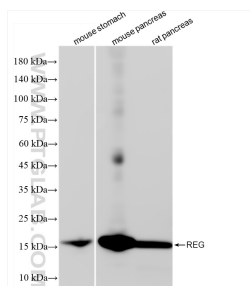
Storage:
Store at -80°C.

Storage Buffer:
PBS Only

For technical support and original validation data for this product please contact:
T: 1 (888) 4PTGLAB (1-888-478-4522) (toll free in USA), or 1(312) 455-8498 (outside USA)
E: proteintech@ptglab.com
W: ptglab.com

This product is exclusively available under Proteintech Group brand and is not available to purchase from any other manufacturer.

Selected Validation Data



mouse stomach tissue, mouse pancreas tissue, rat pancreas tissue. This data was developed using the same antibody clone with 84287-3-PBS in a different storage buffer formulation.