

For Research Use Only

# Mouse IGFBP3 Recombinant antibody, PBS Only (Capture)

Catalog Number: 84288-1-PBS



## Basic Information

<b>Catalog Number:</b> 84288-1-PBS	<b>GenBank Accession Number:</b> NM_008343	<b>Purification Method:</b> Protein A purification
<b>Size:</b> 100ug , Concentration: 1 mg/ml by Nanodrop;	<b>GeneID (NCBI):</b> 16009	<b>CloneNo.:</b> 241619D3
<b>Source:</b> Rabbit	<b>UNIPROT ID:</b> CAA57271.1(R250Q,Q259R,S260G,R271P)	
<b>Isotype:</b> IgG	<b>Full Name:</b> insulin-like growth factor binding protein 3	
	<b>Calculated MW:</b> 32 kDa	

## Applications

**Tested Applications:**  
Cytometric bead array, Sandwich ELISA, Indirect ELISA, Sample test

**Species Specificity:**  
mouse

## Product Information

84288-1-PBS targets IGFBP3 as part of a matched antibody pair:

MP01202-2: 84288-1-PBS capture and 84288-3-PBS detection (validated in Cytometric bead array, Sandwich ELISA)

Unconjugated rabbit recombinant monoclonal antibody in PBS only (BSA and azide free) storage buffer at a concentration of 1 mg/mL, ready for conjugation. Created using Proteintech's proprietary in-house recombinant technology. Recombinant production enables unrivalled batch-to-batch consistency, easy scale-up, and future security of supply.

This conjugation ready format makes antibodies ideal for use in many applications including: ELISAs, multiplex assays requiring matched pairs, mass cytometry, and multiplex imaging applications. Antibody use should be optimized by the end user for each application and assay.

## Storage

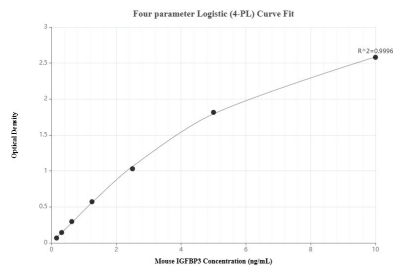
**Storage:**  
Store at -80°C.

**Storage Buffer:**  
PBS Only

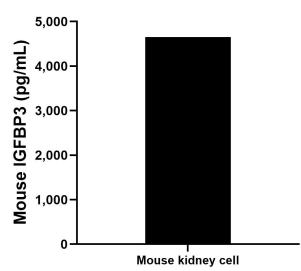
For technical support and original validation data for this product please contact:  
T: 1 (888) 4PTGLAB (1-888-478-4522) (toll free in USA), or 1(312) 455-8498 (outside USA)  
E: [proteintech@ptglab.com](mailto:proteintech@ptglab.com)  
W: [ptglab.com](http://ptglab.com)

This product is exclusively available under Proteintech Group brand and is not available to purchase from any other manufacturer.

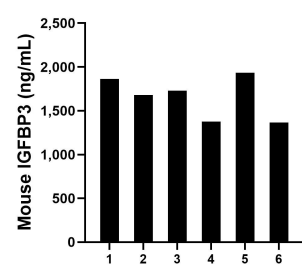
## Selected Validation Data



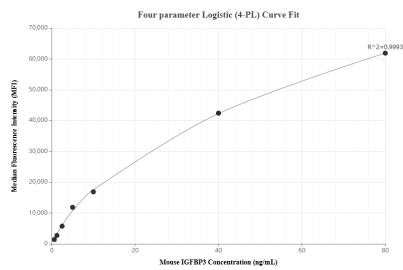
Sandwich ELISA standard curve of MP01202-2, Mouse IGFBP3 Recombinant Matched Antibody Pair - PBS only. 84288-1-PBS was coated to a plate as the capture antibody and incubated with serial dilutions of standard Eg0513. 84288-3-PBS was HRP conjugated as the detection antibody. Range: 0.156-10 ng/mL



Mouse kidney tissue from one adult mouse (chopped in 1-2 mm pieces in 30 mL of medium) was cultured in RPMI supplemented with 10 % fetal calfserum and 50  $\mu$ M  $\beta$ -mercaptoethanol. Aliquots of the cell culture supernates were removed, assayed for levels of mouse IGFBP3, and measured 4,654.1 pg/mL



Serum of six mice was measured. The mouse IGFBP3 concentration of detected samples was determined to be 1,658.02 ng/mL with a range of 1,364.6 - 1,933.3 ng/mL



Cytometric bead array standard curve of MP01202-2, MOUSE IGFBP3 Recombinant Matched Antibody Pair, PBS Only. Capture antibody: 84288-1-PBS. Detection antibody: 84288-3-PBS. Standard: Eg0513. Range: 0.625-80 ng/mL