

For Research Use Only

Mouse IGFBP3 Recombinant antibody, PBS Only (Capture/Detector)

Catalog Number: 84288-3-PBS



Basic Information

Catalog Number: 84288-3-PBS	GenBank Accession Number: NM_008343	Purification Method: Protein A purification
Size: 100ug , Concentration: 1 mg/ml by Nanodrop;	GeneID (NCBI): 16009	CloneNo.: 241619D10
Source: Rabbit	UNIPROT ID: CAA57271.1(R250Q,Q259R,S260G,R271P)	
Isotype: IgG	Full Name: insulin-like growth factor binding protein 3	
	Calculated MW: 32 kDa	

Applications

Tested Applications:
Cytometric bead array, Sandwich ELISA, Indirect ELISA, Sample test

Species Specificity:
mouse

Product Information

84288-3-PBS targets IGFBP3 as part of a matched antibody pair:

MP01202-1: 84288-2-PBS capture and 84288-3-PBS detection (validated in Cytometric bead array)

MP01202-2: 84288-1-PBS capture and 84288-3-PBS detection (validated in Cytometric bead array, Sandwich ELISA)

MP01202-3: 84288-3-PBS capture and 84288-4-PBS detection (validated in Cytometric bead array)

Unconjugated rabbit recombinant monoclonal antibody in PBS only (BSA and azide free) storage buffer at a concentration of 1 mg/mL, ready for conjugation. Created using Proteintech's proprietary in-house recombinant technology. Recombinant production enables unrivalled batch-to-batch consistency, easy scale-up, and future security of supply.

This conjugation ready format makes antibodies ideal for use in many applications including: ELISAs, multiplex assays requiring matched pairs, mass cytometry, and multiplex imaging applications. Antibody use should be optimized by the end user for each application and assay.

Storage

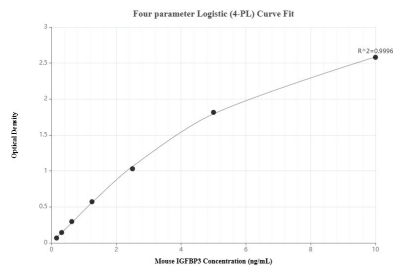
Storage:
Store at -80°C.

Storage Buffer:
PBS Only

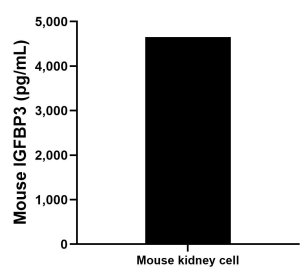
For technical support and original validation data for this product please contact:
T: 1 (888) 4PTGLAB (1-888-478-4522) (toll free in USA), or 1(312) 455-8498 (outside USA)
E: proteintech@ptglab.com
W: ptglab.com

This product is exclusively available under Proteintech Group brand and is not available to purchase from any other manufacturer.

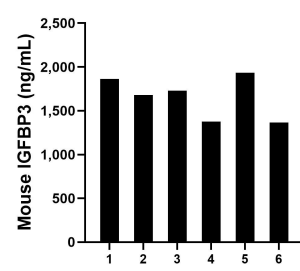
Selected Validation Data



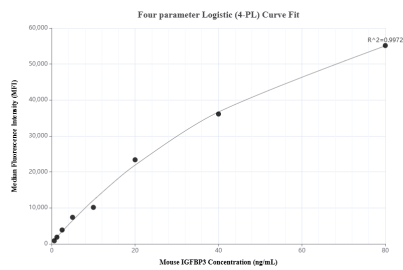
Sandwich ELISA standard curve of MP01202-2, Mouse IGFBP3 Recombinant Matched Antibody Pair - PBS only. 84288-1-PBS was coated to a plate as the capture antibody and incubated with serial dilutions of standard Eg0513. 84288-3-PBS was HRP conjugated as the detection antibody. Range: 0.156-10 ng/mL



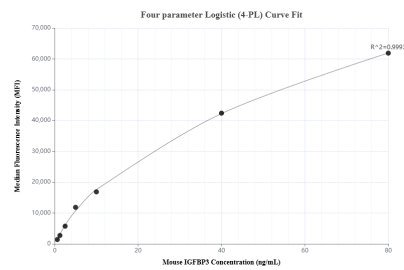
Mouse kidney tissue from one adult mouse (chopped in 1-2 mm pieces in 30 mL of medium) was cultured in RPMI supplemented with 10 % fetal calf serum and 50 μ M β -mercaptoethanol. Aliquots of the cell culture supernates were removed, assayed for levels of mouse IGFBP3, and measured 4,654.1 pg/mL



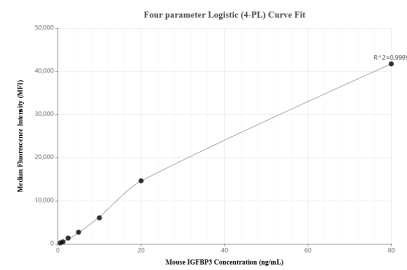
Serum of six mice was measured. The mouse IGFBP3 concentration of detected samples was determined to be 1,658.02 ng/mL with a range of 1,364.6 - 1,933.3 ng/mL



Cytometric bead array standard curve of MP01202-1, MOUSE IGFBP3 Recombinant Matched Antibody Pair, PBS Only. Capture antibody: 84288-2-PBS. Detection antibody: 84288-3-PBS. Standard: Eg0513. Range: 0.625-80 ng/mL



Cytometric bead array standard curve of MP01202-2, MOUSE IGFBP3 Recombinant Matched Antibody Pair, PBS Only. Capture antibody: 84288-1-PBS. Detection antibody: 84288-3-PBS. Standard: Eg0513. Range: 0.625-80 ng/mL



Cytometric bead array standard curve of MP01202-3, MOUSE IGFBP3 Recombinant Matched Antibody Pair, PBS Only. Capture antibody: 84288-3-PBS. Detection antibody: 84288-4-PBS. Standard: Eg0513. Range: 0.625-80 ng/mL