

For Research Use Only

# ARFGEF2 Recombinant antibody, PBS Only (Detector)

Catalog Number: 84296-4-PBS



## Basic Information

<b>Catalog Number:</b> 84296-4-PBS	<b>GenBank Accession Number:</b> BC050449	<b>Purification Method:</b> Protein A purification
<b>Size:</b> 100ug , Concentration: 1 mg/ml by Nanodrop;	<b>GeneID (NCBI):</b> 10564	<b>CloneNo.:</b> 241538H5
<b>Source:</b> Rabbit	<b>UNIPROT ID:</b> Q9Y6D5	
<b>Isotype:</b> IgG	<b>Full Name:</b> ADP-ribosylation factor guanine nucleotide-exchange factor 2 (brefeldin A-inhibited)	
<b>Immunogen Catalog Number:</b> AG35396	<b>Observed MW:</b> 202 kDa	

## Applications

**Tested Applications:**  
WB, IHC, Cytometric bead array, Indirect ELISA

**Species Specificity:**  
human

## Product Information

84296-4-PBS targets ARFGEF2 as part of a matched antibody pair:

MP01199-3: 84296-5-PBS capture and 84296-4-PBS detection (validated in Cytometric bead array)

Unconjugated rabbit recombinant monoclonal antibody in PBS only (BSA and azide free) storage buffer at a concentration of 1 mg/mL, ready for conjugation. Created using Proteintech's proprietary in-house recombinant technology. Recombinant production enables unrivalled batch-to-batch consistency, easy scale-up, and future security of supply.

This conjugation ready format makes antibodies ideal for use in many applications including: ELISAs, multiplex assays requiring matched pairs, mass cytometry, and multiplex imaging applications. Antibody use should be optimized by the end user for each application and assay.

## Background Information

ADP-ribosylation factors (ARFs) play an important role in intracellular vesicular trafficking. ARFGEF2 is involved in the activation of ARFs by accelerating replacement of bound GDP with GTP and is involved in Golgi transport. ARFGEF2 contains a Sec7 domain, which may be responsible for its guanine-nucleotide exchange activity and also brefeldin A inhibition.

## Storage

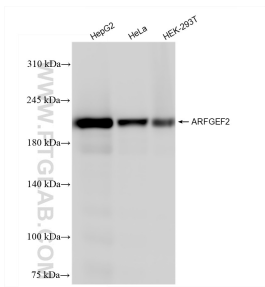
**Storage:**  
Store at -80°C.

**Storage Buffer:**  
PBS Only

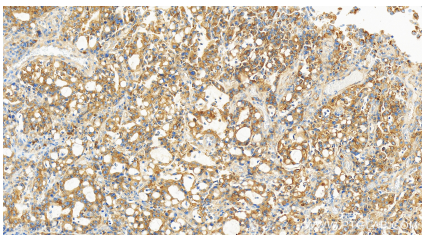
For technical support and original validation data for this product please contact:  
T: 1 (888) 4PTGLAB (1-888-478-4522) (toll free in USA), or 1(312) 455-8498 (outside USA)  
E: [proteintech@ptglab.com](mailto:proteintech@ptglab.com)  
W: [ptglab.com](http://ptglab.com)

This product is exclusively available under Proteintech Group brand and is not available to purchase from any other manufacturer.

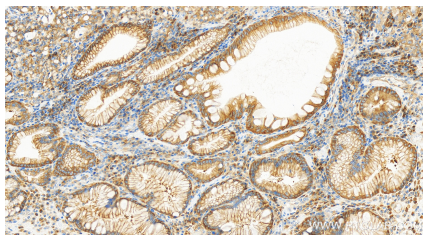
Selected Validation Data



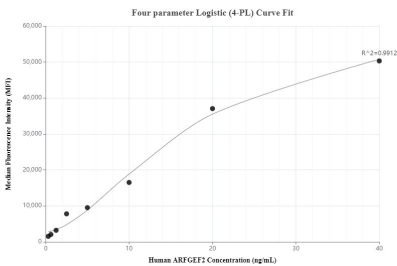
Various lysates were subjected to SDS PAGE followed by western blot with 84296-4-RR (ARFGEF2 antibody) at dilution of 1:10000 incubated at room temperature for 1.5 hours. This data was developed using the same antibody clone with 84296-4-PBS in a different storage buffer formulation.



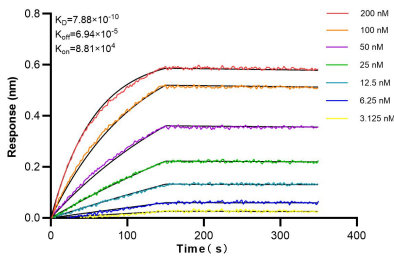
Immunohistochemical analysis of paraffin-embedded human stomach cancer tissue slide using 84296-4-RR (ARFGEF2 antibody) at dilution of 1:400 (under 40x lens). Heat mediated antigen retrieval with Tris-EDTA buffer (pH 9.0). This data was developed using the same antibody clone with 84296-4-PBS in a different storage buffer formulation.



Immunohistochemical analysis of paraffin-embedded human stomach cancer tissue slide using 84296-4-RR (ARFGEF2 antibody) at dilution of 1:400 (under 40x lens). Heat mediated antigen retrieval with Tris-EDTA buffer (pH 9.0). This data was developed using the same antibody clone with 84296-4-PBS in a different storage buffer formulation.



Cytometric bead array standard curve of MP01199-3, ARFGEF2 Recombinant Matched Antibody Pair, PBS Only. Capture antibody: 84296-5-PBS. Detection antibody: 84296-4-PBS. Standard: Ag35396. Range: 0.313-40 ng/mL.



Biolayer interferometry (BLI) kinetic assays of 84296-4-RR against Human ARFGEF2 were performed. The affinity constant is 0.788 nM.